





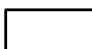
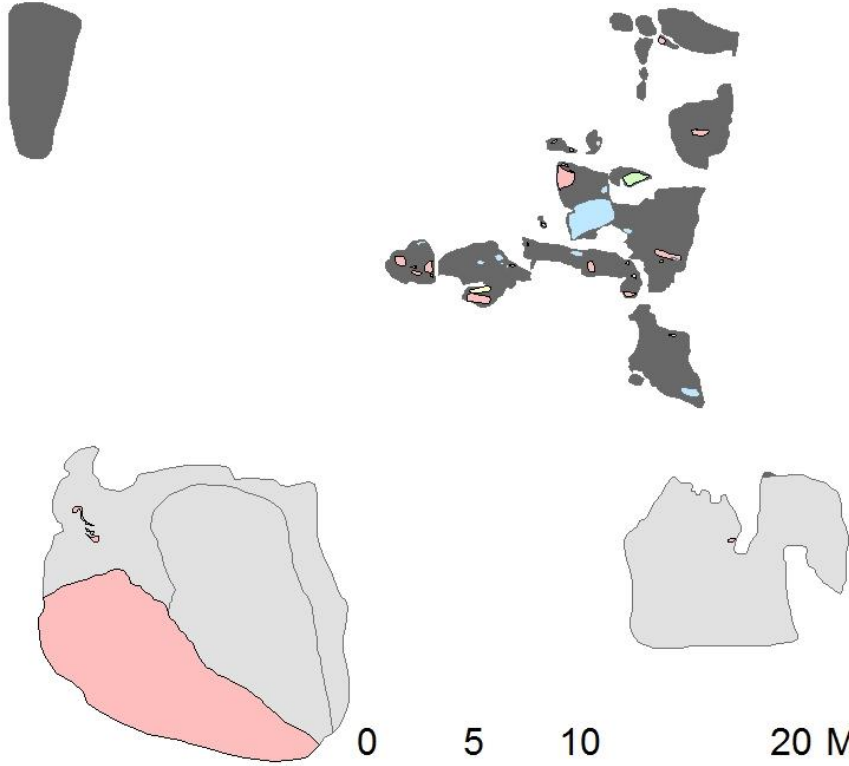


Appendix M: Trench maps

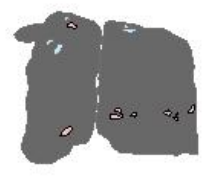
Outcrop	Location	Easting (NAD83)	Northing (NAD83)
West of Foy-Hess Intersection (FH2)	Foy-Hess Intersection	476218	5183984
West of Foy-Hess Intersection (FH3)	Foy-Hess Intersection	476443	5184032
Foy-Hess Intersection (FH7)	Foy-Hess Intersection	476620	5184081
East of Foy-Hess Intersection (FH9)	Foy-Hess Intersection	476643	5184114
South of Foy-Hess Intersection (FH11)	Foy-Hess Intersection	476624	5183959
Hess Ermatinger Trench 1 (HE1)	Hess Ermatinger	449669	5161892
Hess Ermatinger Trench 2 (HE2)	Hess Ermatinger	449173	5160728
Hess Ermatinger Trench 3 (HE3)	Hess Ermatinger	446402	5155276
Foy North (OD1 - OC1/2)	Foy North of Intersection	478279	5186494
Foy North (OD1 - OC3/4)	Foy North of Intersection	478259	5186549
Foy North (OD2)	Foy North of Intersection	478411	5187056
KGHM (Area 3)	Foy South	487364	5177285
KGHM (Area 4)	Foy South	487553	5177196

Legend	
	Breccia
	Diabase
	Gneiss
	Granite
	Inclusion poor granodiorite
	Inclusion bearing granodiorite
	Outcrops

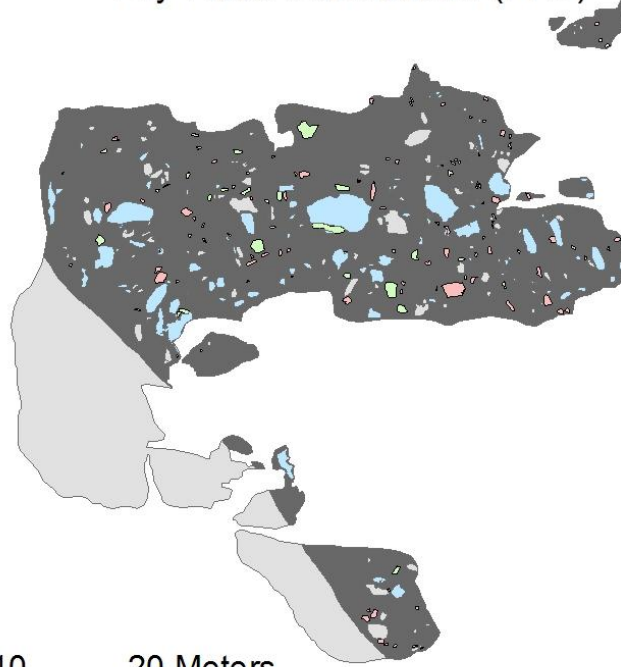
West of Foy-Hess Intersection (FH2)



West of Foy-Hess Intersection (FH3)

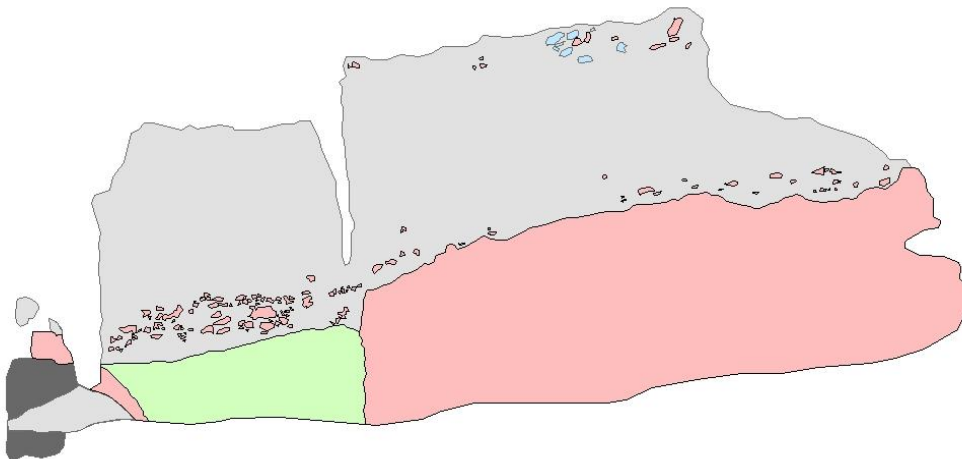


Foy-Hess Intersection (FH7)



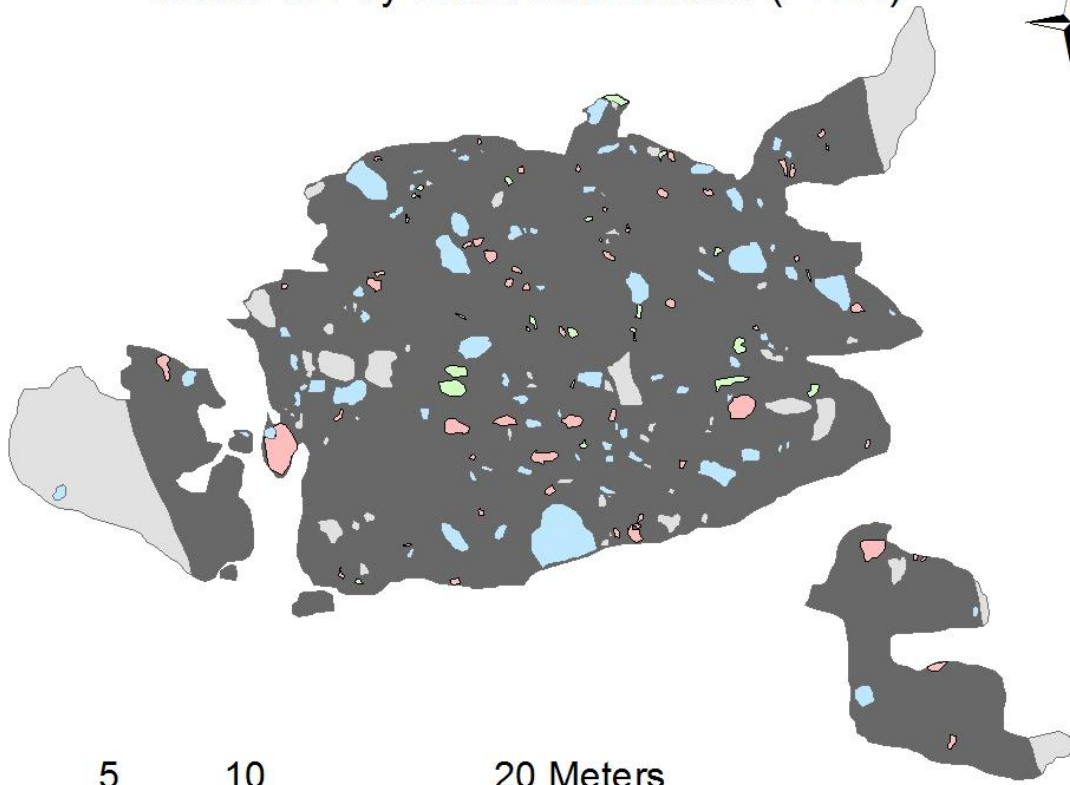
0 5 10 20 Meters

East of Foy-Hess Intersection (FH9)



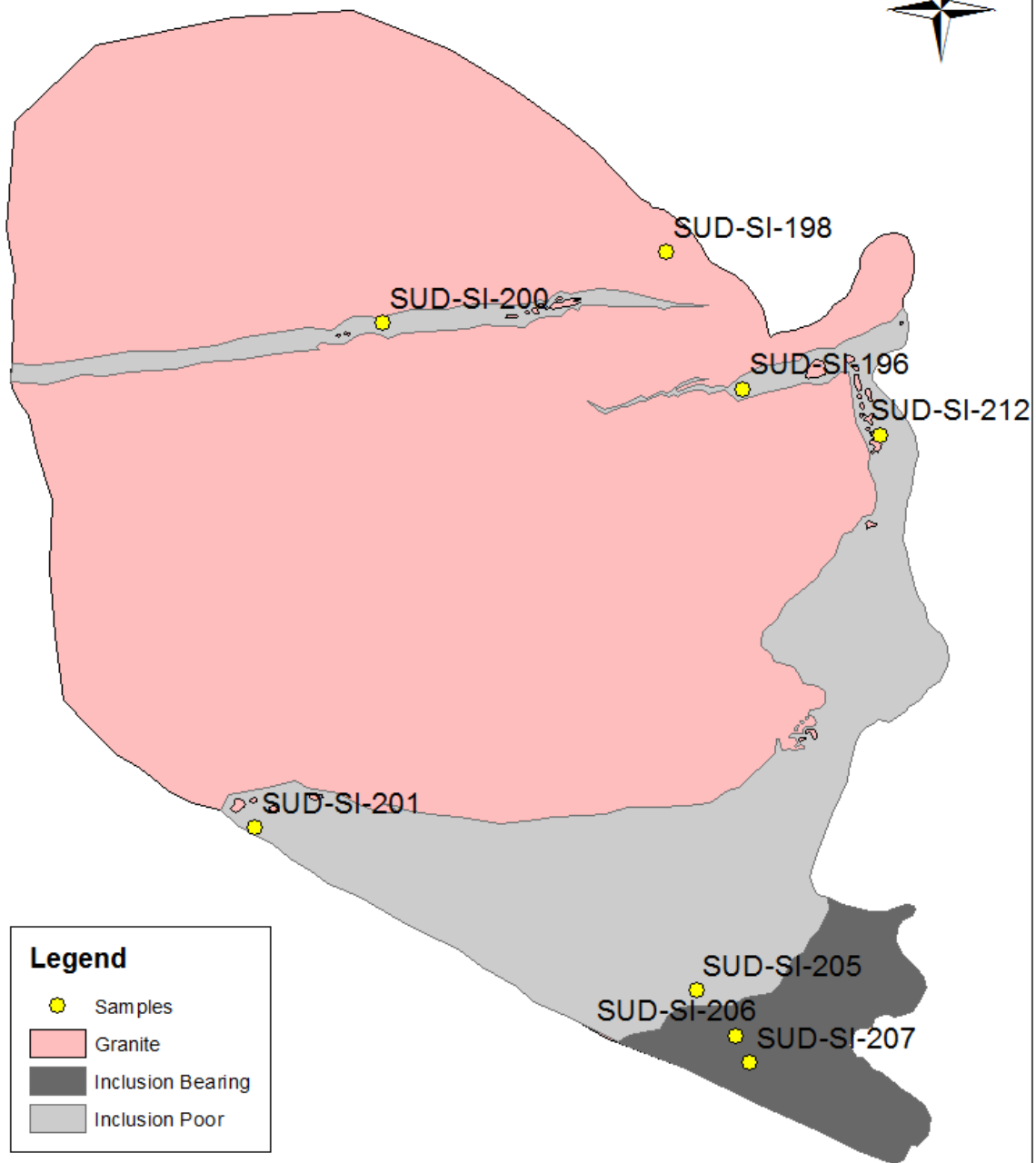
0 3.5 7 14 Meters

South of Foy-Hess Intersection (FH11)

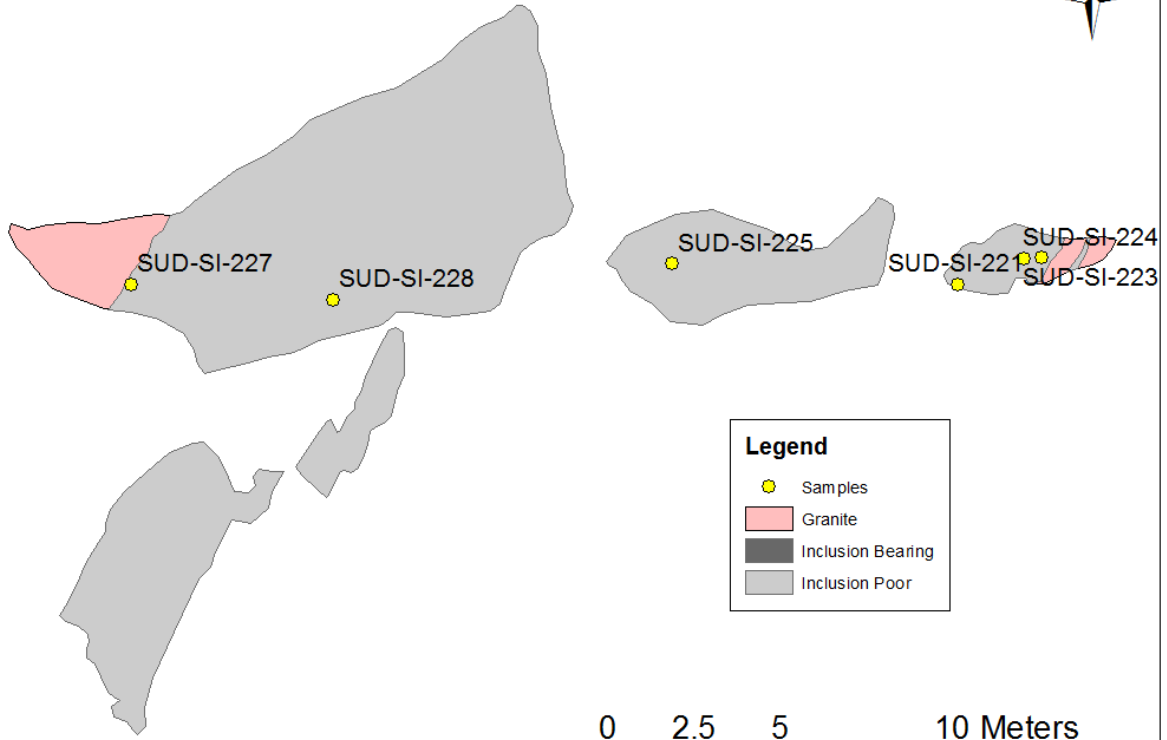


0 5 10 20 Meters

Hess Ermatinger Trench 1



Hess Ermatinger Trench 2

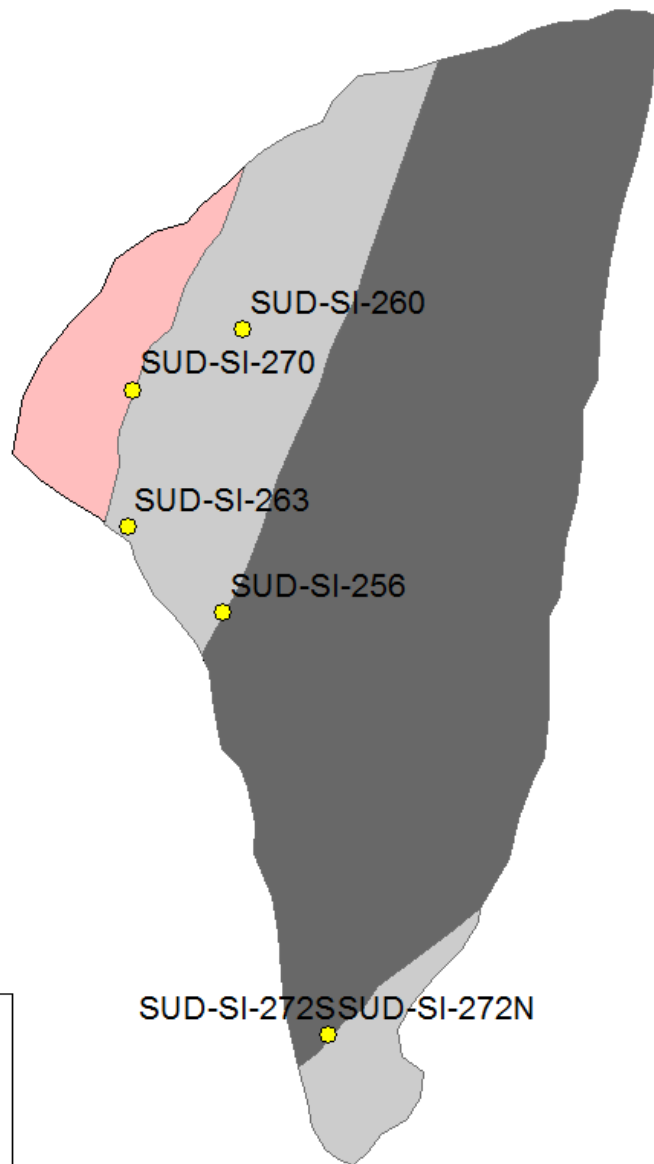


Legend

- Samples
- Granite
- Inclusion Bearing
- Inclusion Poor

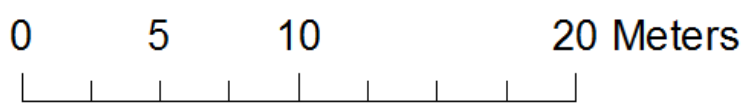


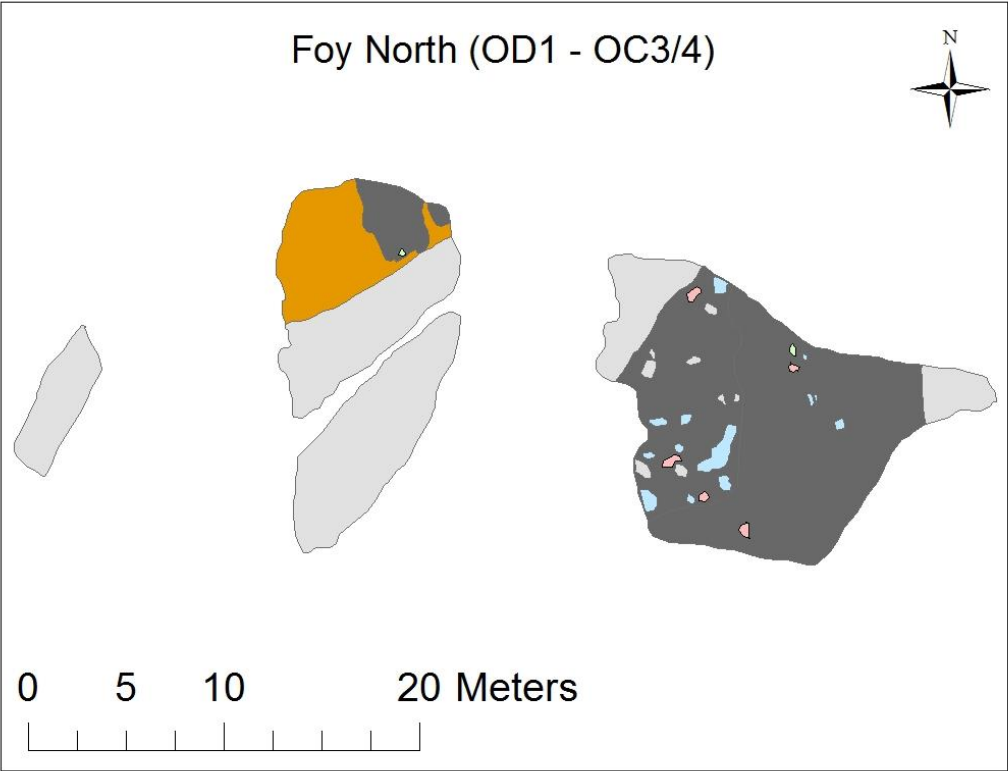
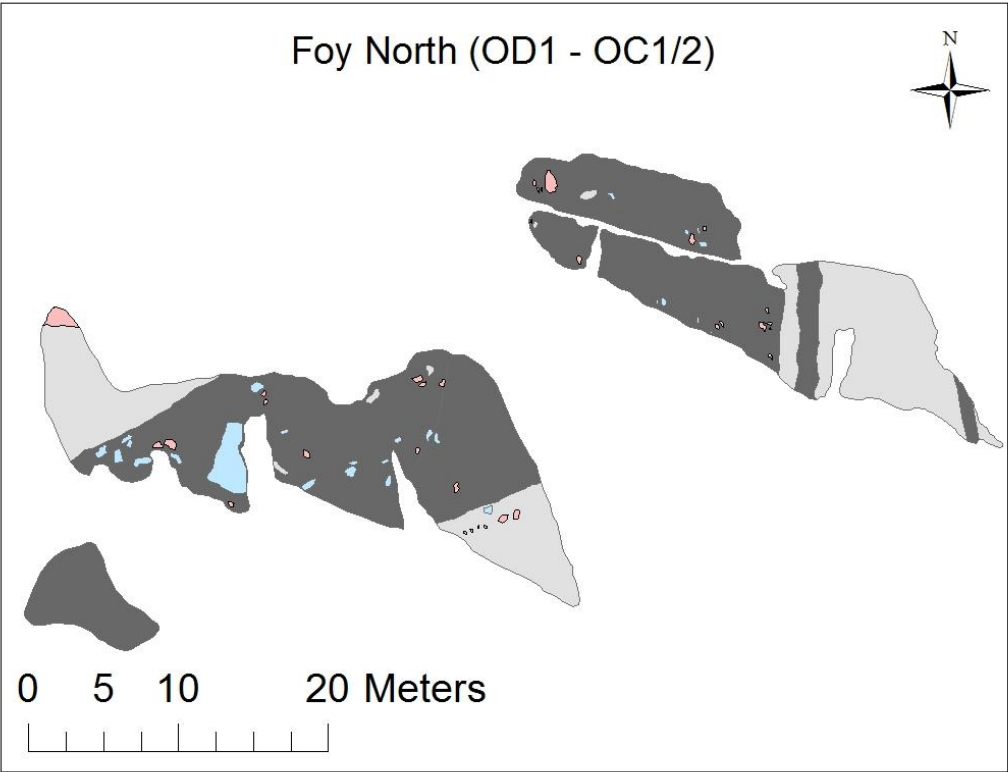
Hess Ermatinger Trench 3



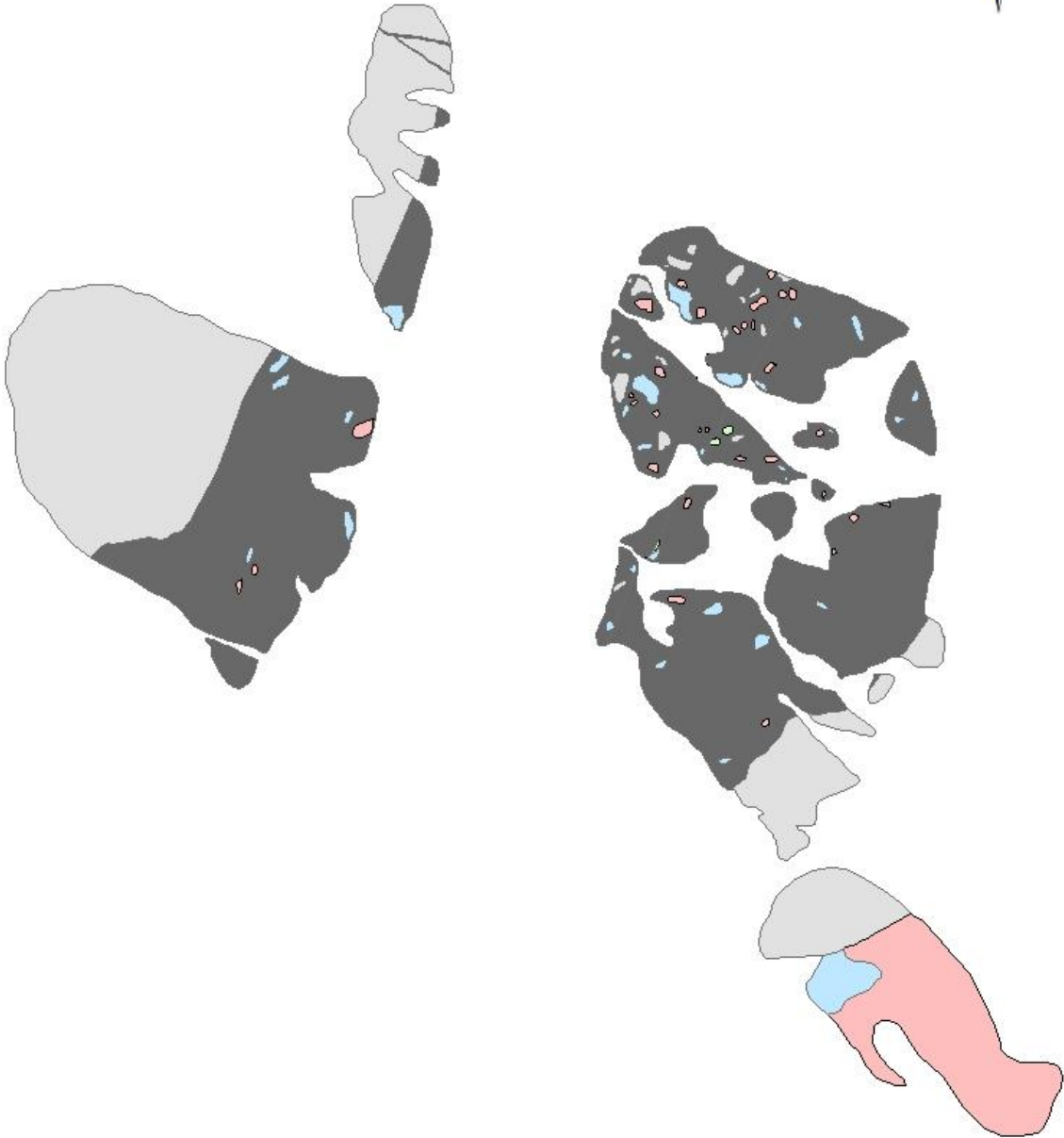
Legend

- Samples
- Granite
- Inclusion Bearing
- Inclusion Poor





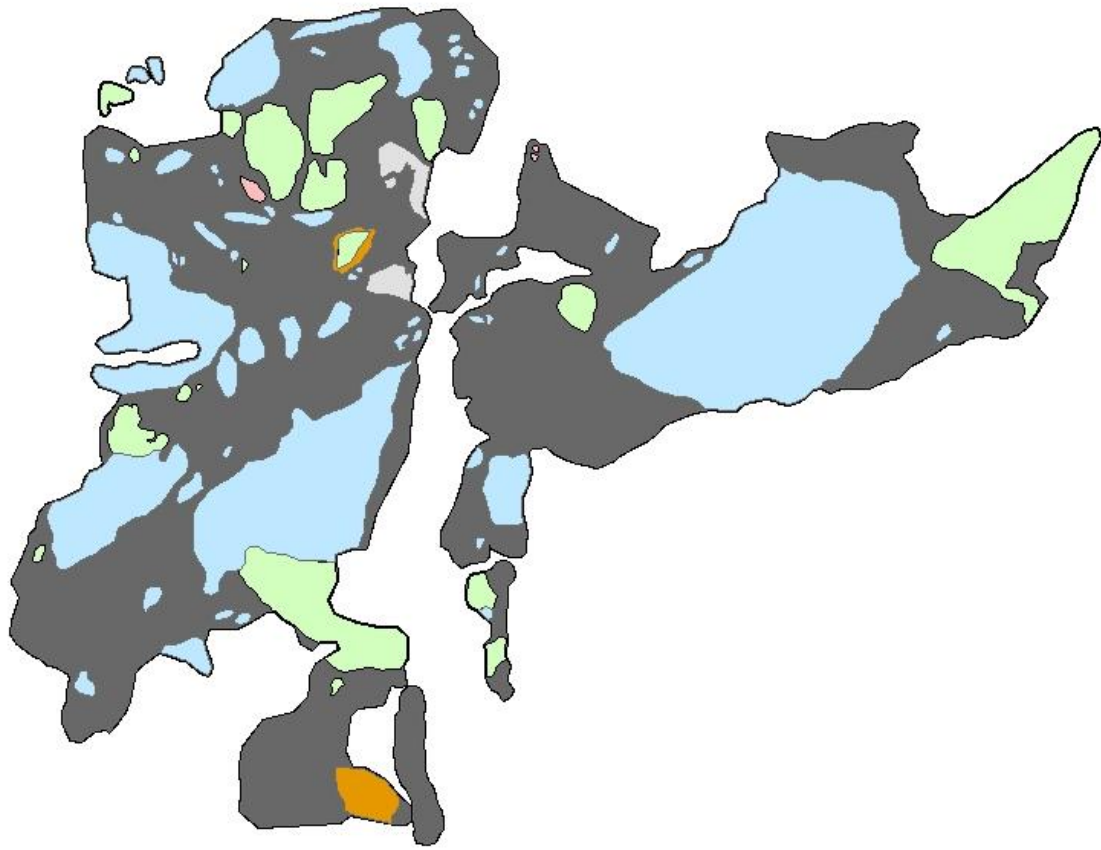
Foy North (OD2)



0 10 20 40 Meters



KGHM (Area 3)



0 5 10 20 Meters



KGHM (Area 4)

