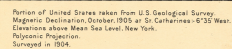
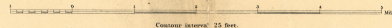


Intelligence Branch
Department of Militia and Defence, 1906.



Quail and Jacks		Provincial Boundary	
Grave		County	
Bridge		Township	
Wood		Railway, each track	
Salting		Railway, one road	
Culvert		Railway, three tracks	
Dam		Railway, Grade	
Fallen or Ruined		Crossing	
Water		Broken grade	
Mine		Cutting	
		Switchbacks	
		Mountain Road	
		Telegraph or Telephone Line	

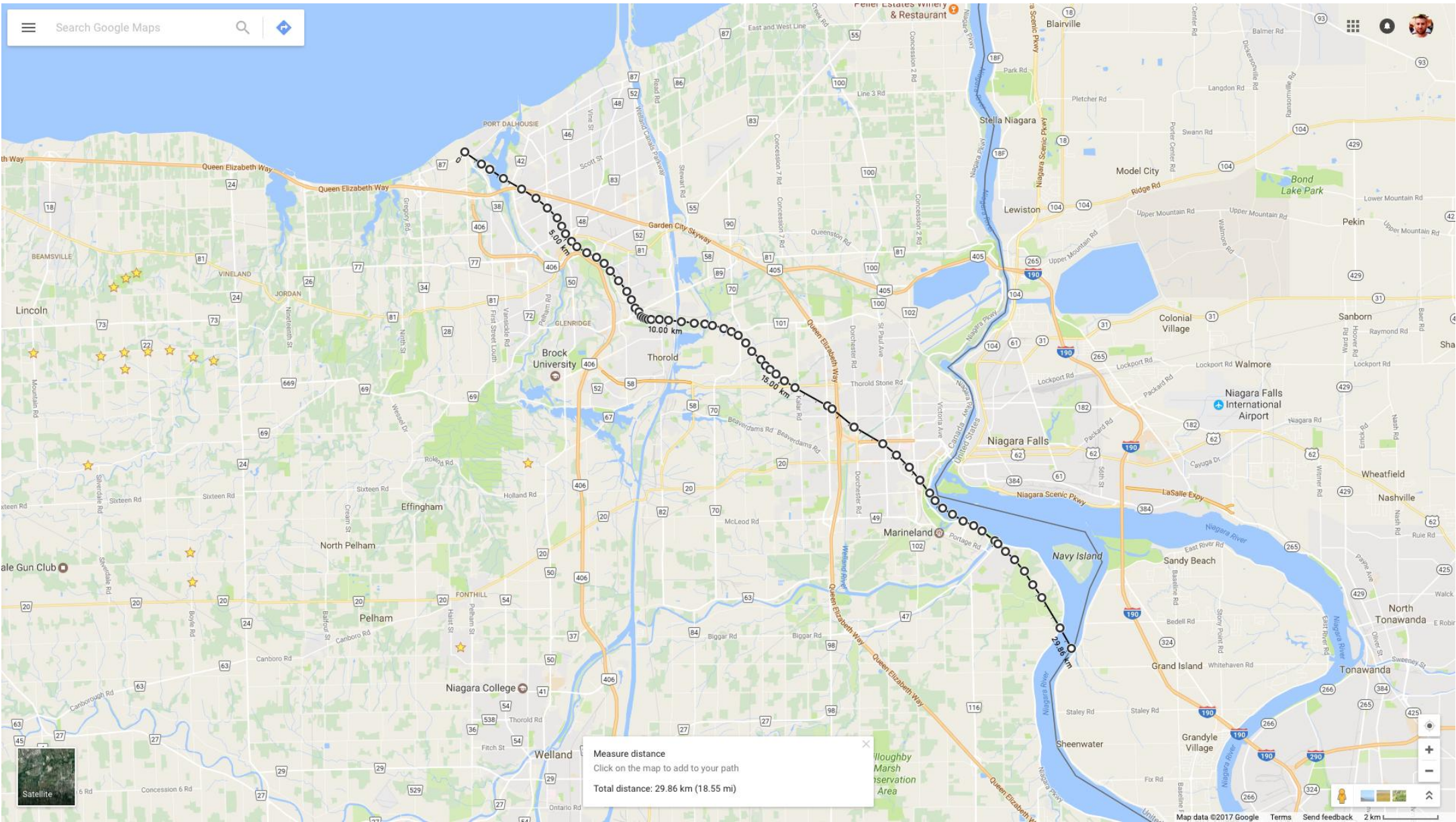
Scale, ~~also~~ or 1 Inch to 1 Mile

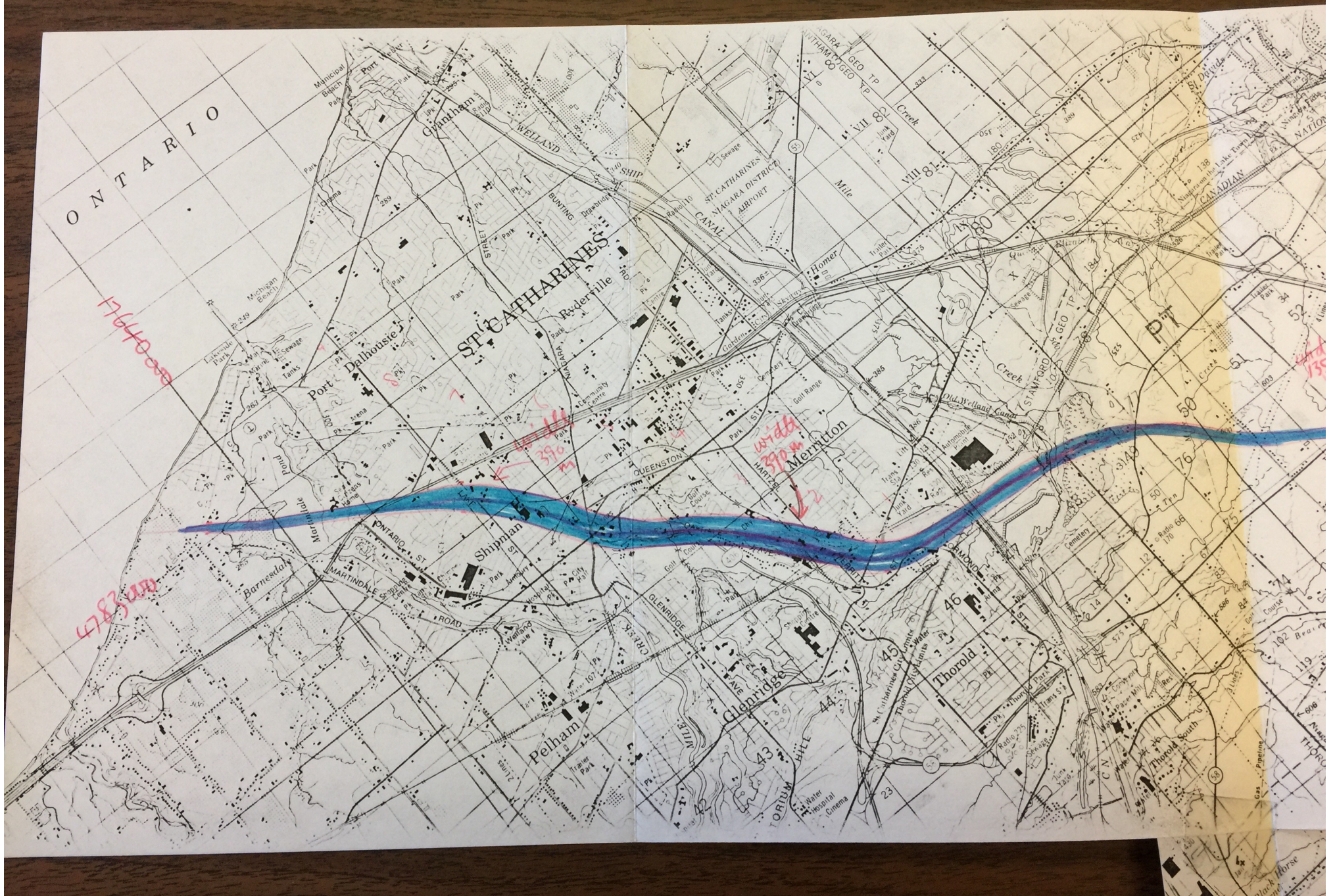


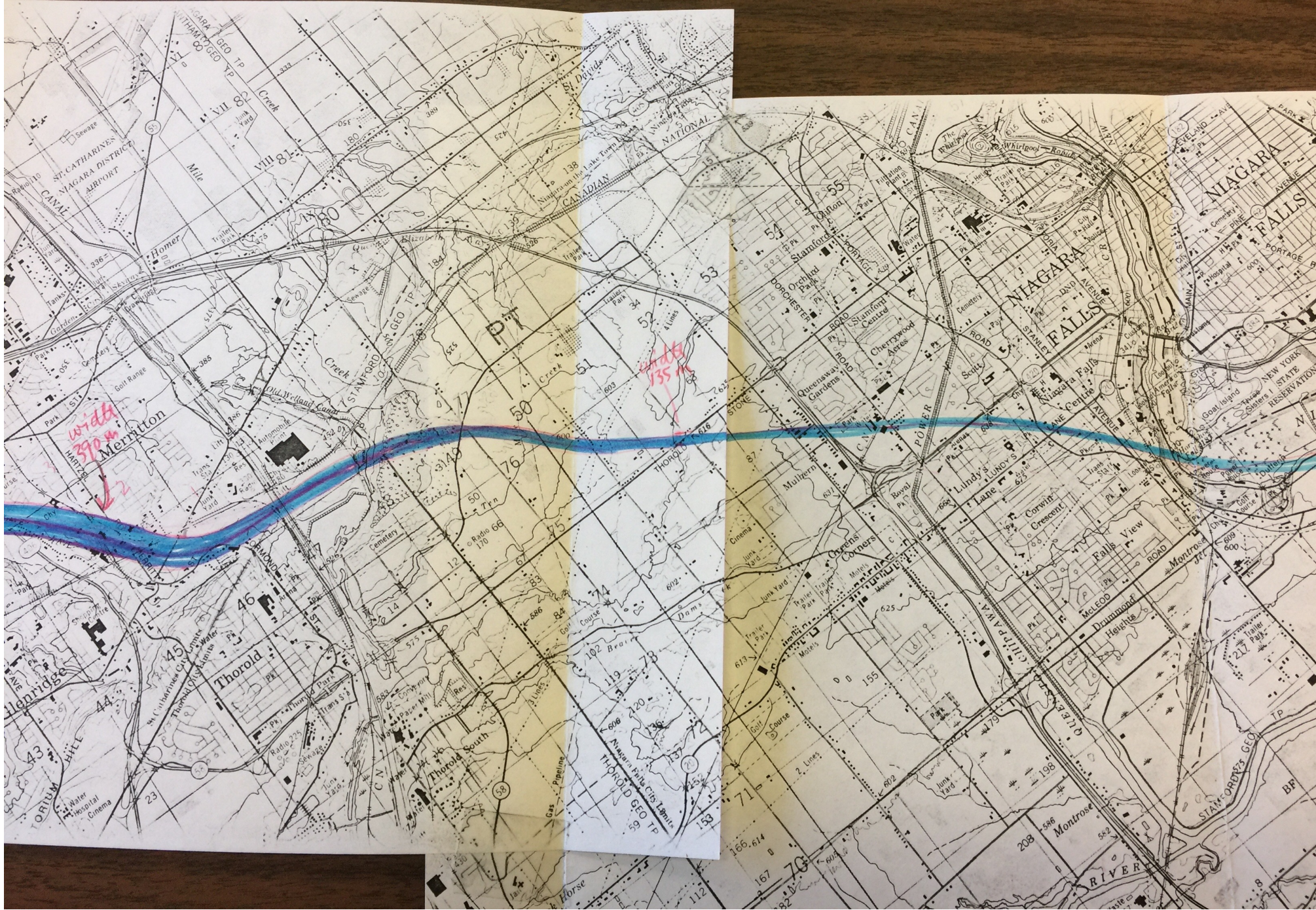
Contour interval 25 feet

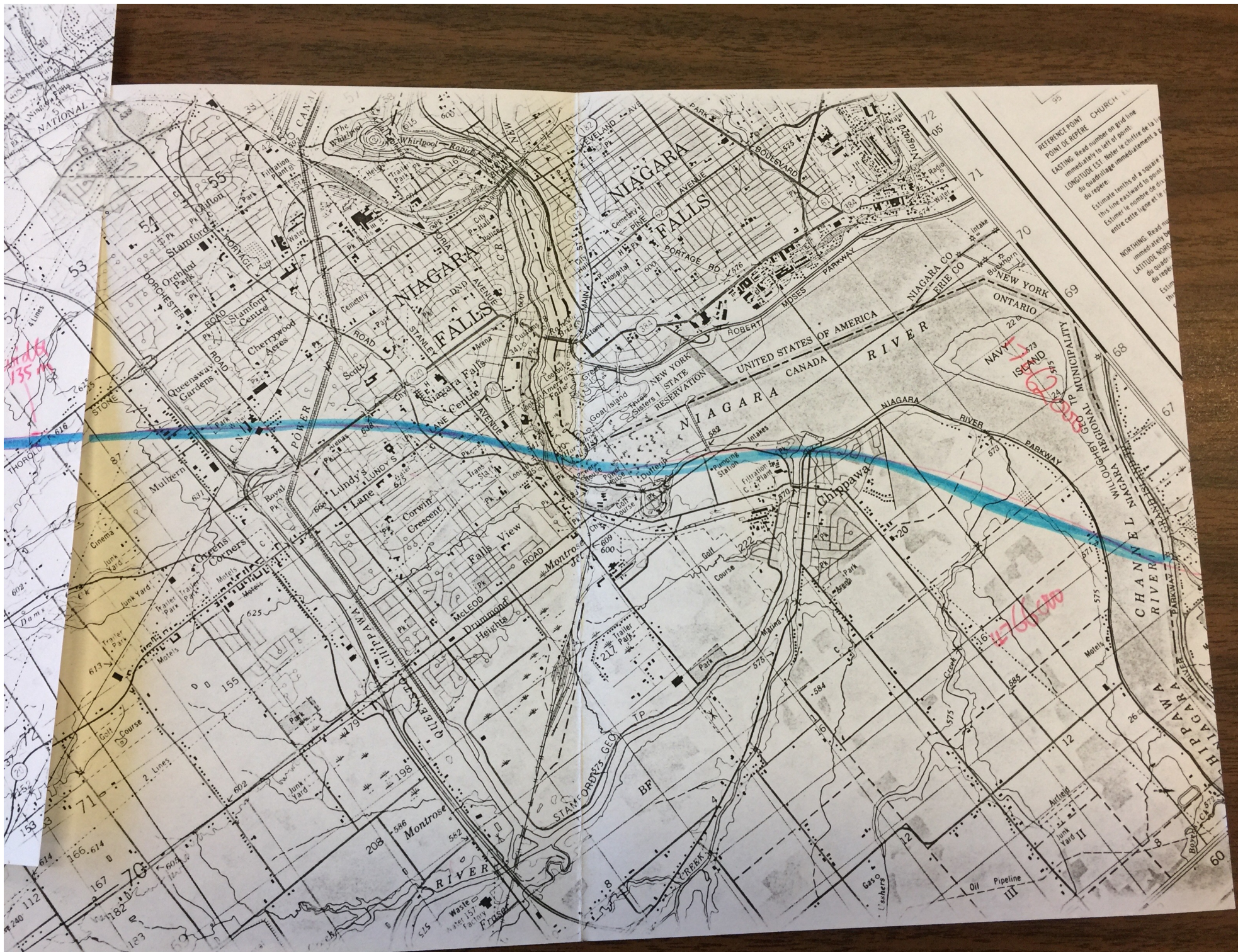
	West	East or Arch		
House			Lighthouse	10 1/2
School			Telephone Office	
Post Office	1	1 1/2	Telephone	1
Blacksmith Shop	1	1 1/2	Dissemination Station	1
Hotel or Tavern	1	1 1/2	Cemetery	10
Churches			Industrial	1
Centers of cross in center of square	1	1 1/2	Tram	
Swamp	1 1/2	1 1/2	Quarry	
Gravel or Flour Mill	1	1 1/2	Cliff	
Other Mills	1	1 1/2	Altitude	10 1/2
or Pastures	1	1 1/2	Country	

ONTARIO 79°-43°
NIAGARA SHEET.
Nº 3.









REFERENCE POINT CHURCH
POINT DE REPÈRE
EASTING: Read number on grid line
immediately to left of point
LONGITUDE: Read number on grid line
immediately to right of point
Estimate tenths of a square
between these lines and the
center of the square
Estimate the number of tenths
between these lines and the
center of the square
Estimate the number of tenths
between these lines and the
center of the square

THE "CASTLETON" TRAIL
JUNE 29, 1956

