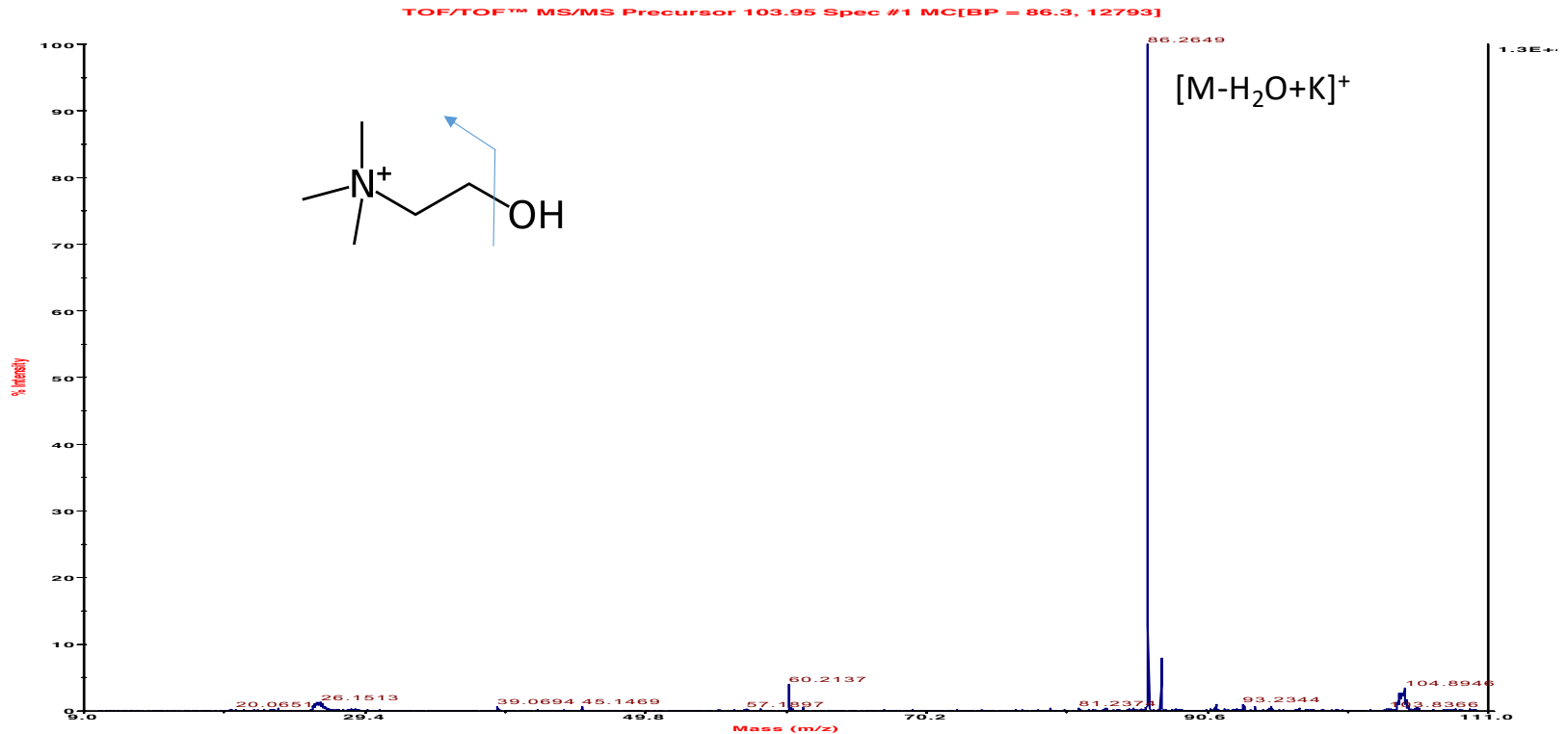


Choline⁺

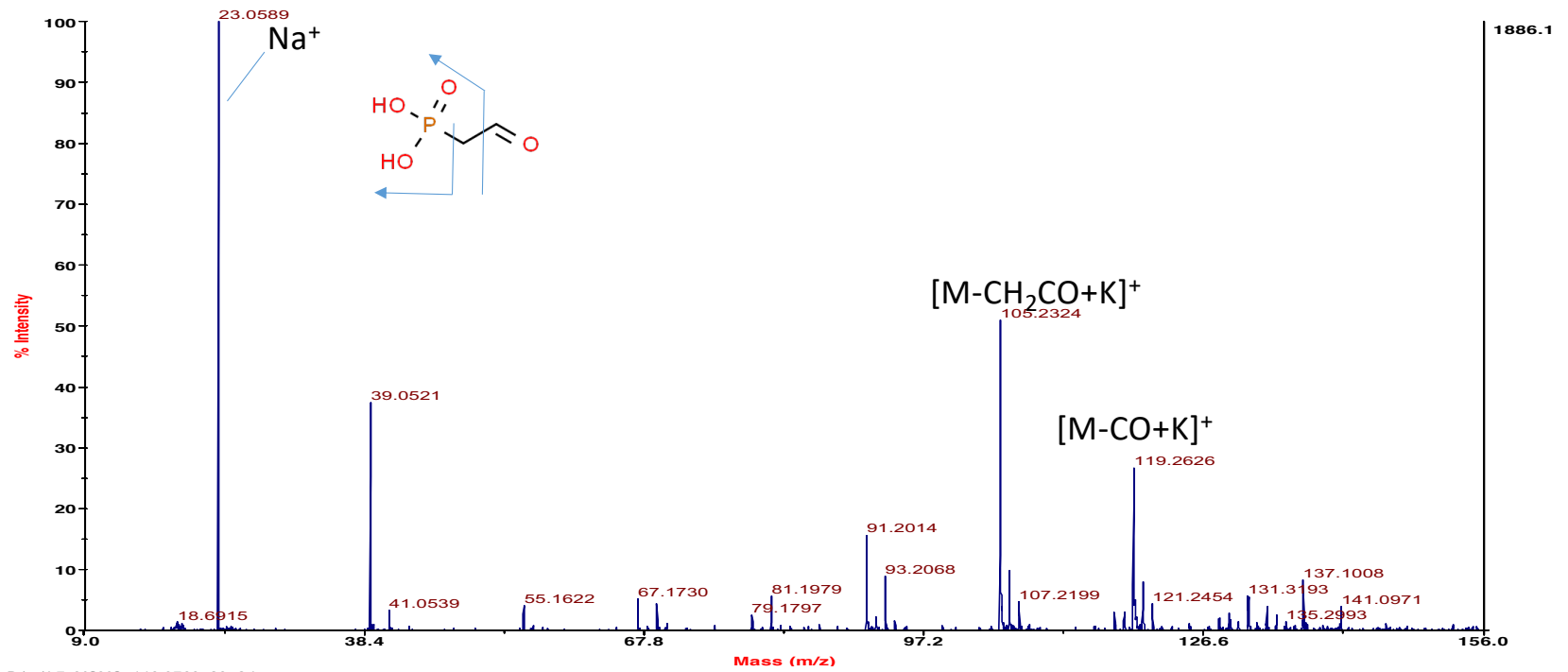


D:\...MSMS_103.9500_12.t2d

Acquired:

[Phosphonoacetaldehyde+Na]⁺

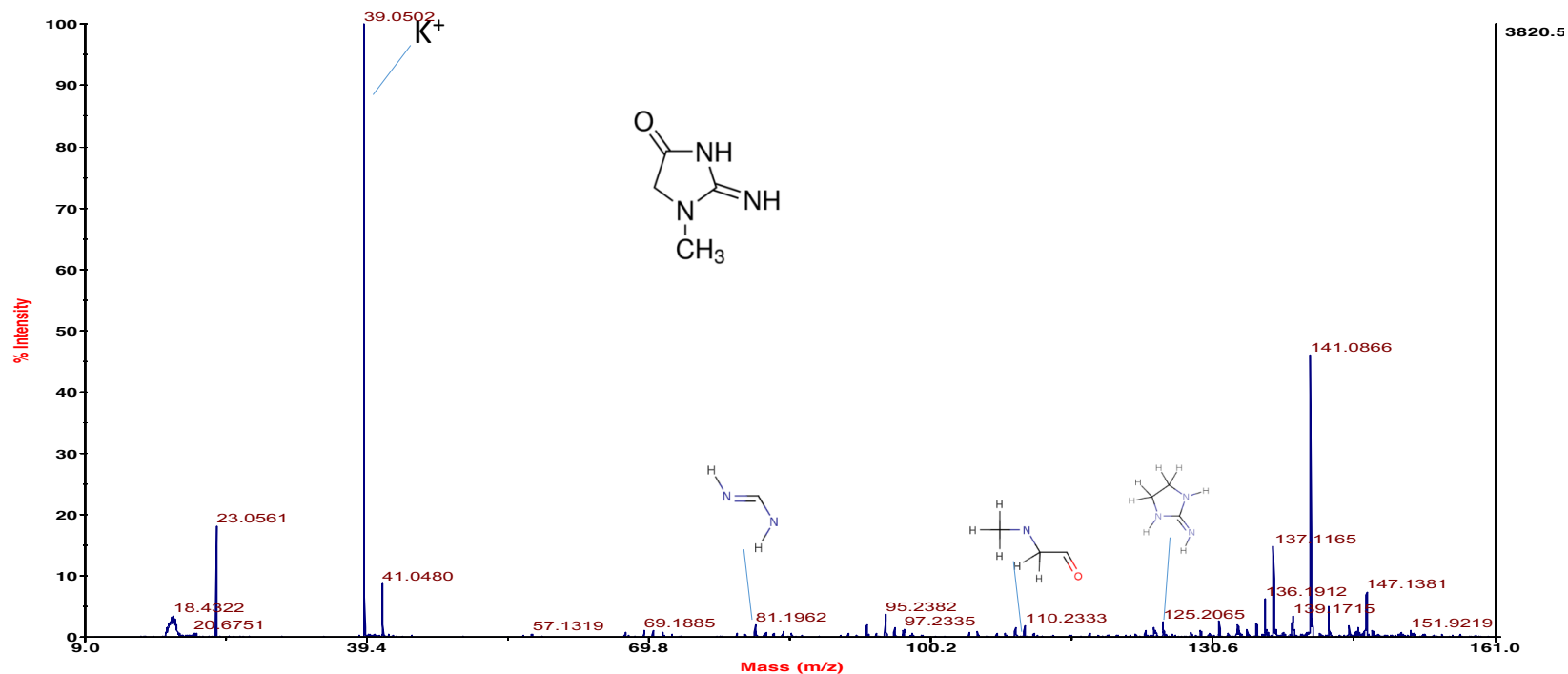
TOF/TOF™ MS/MS Precursor 146.976 Spec #1 MC[BP = 23.1, 1886]



D:\...L7_MSMS_146.9760_23.12d
Acquired:

[Creatinine+K]⁺

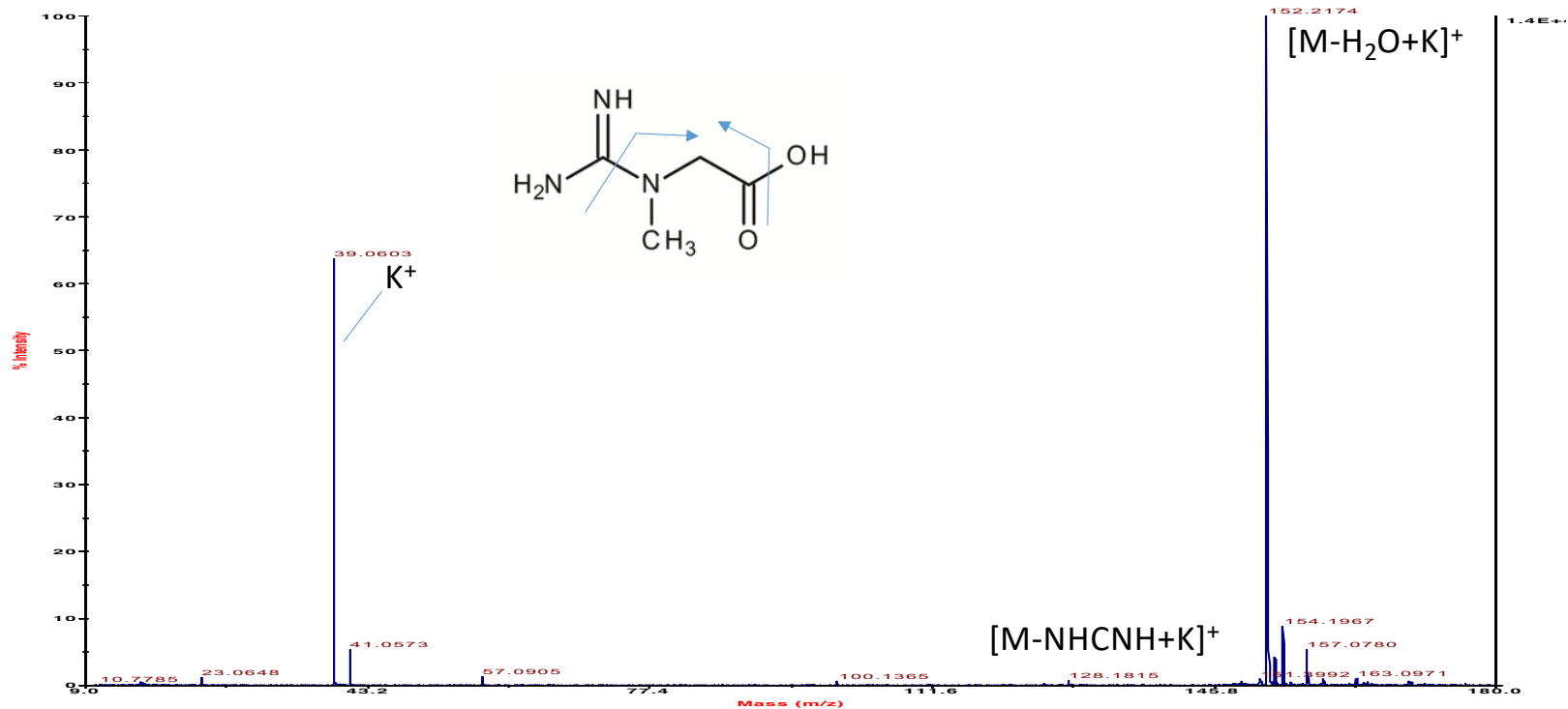
TOF/TOF™ MS/MS Precursor 152.004 Spec #1 MC[BP = 39.1, 3821]



D:\...L7_MSMS_152.0040_5.t2d
Acquired:

[Creatine+K]⁺

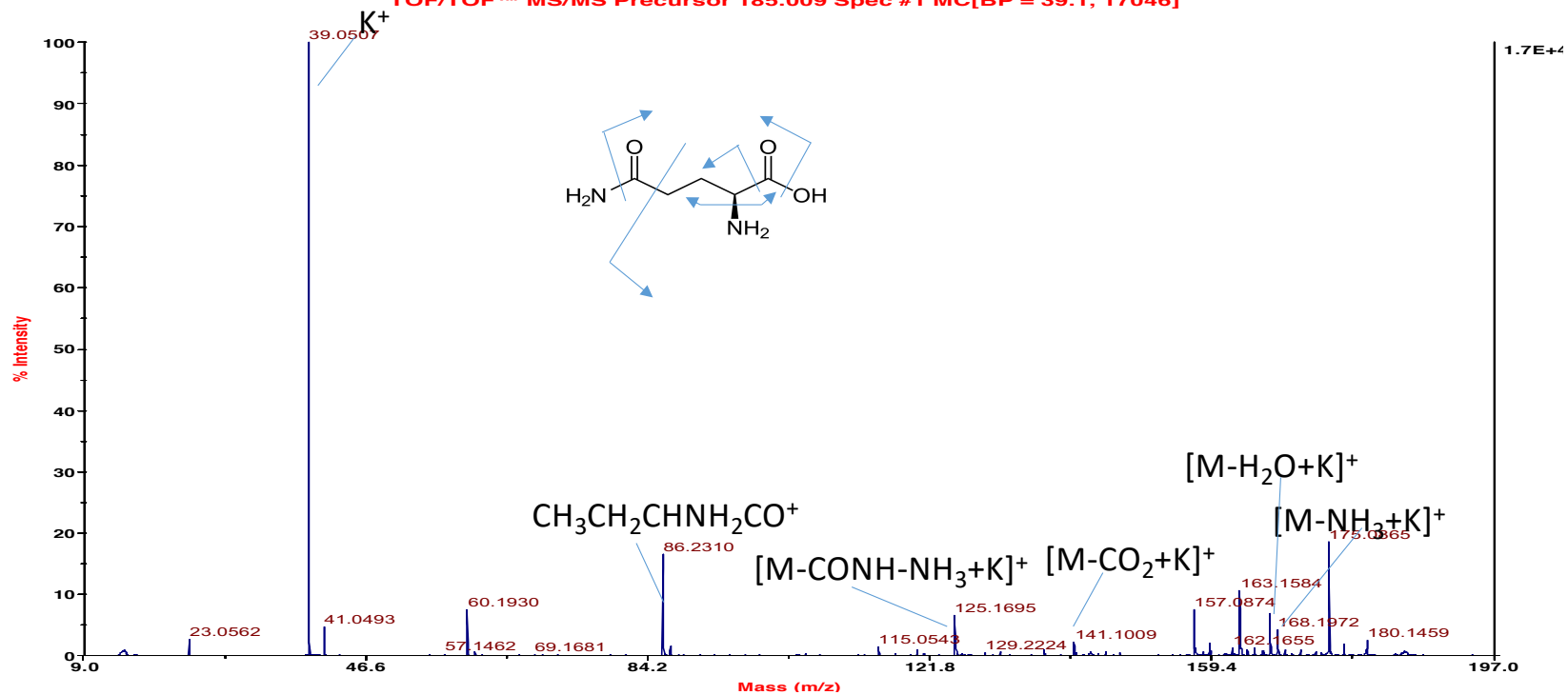
TOF/TOF™ MS/MS Precursor 170.06 Spec #1 MC[BP = 152.2, 14399]



D:\...AD6_MSMS_170.0600_21.t2d
Acquired:

[Glutamine+K]⁺

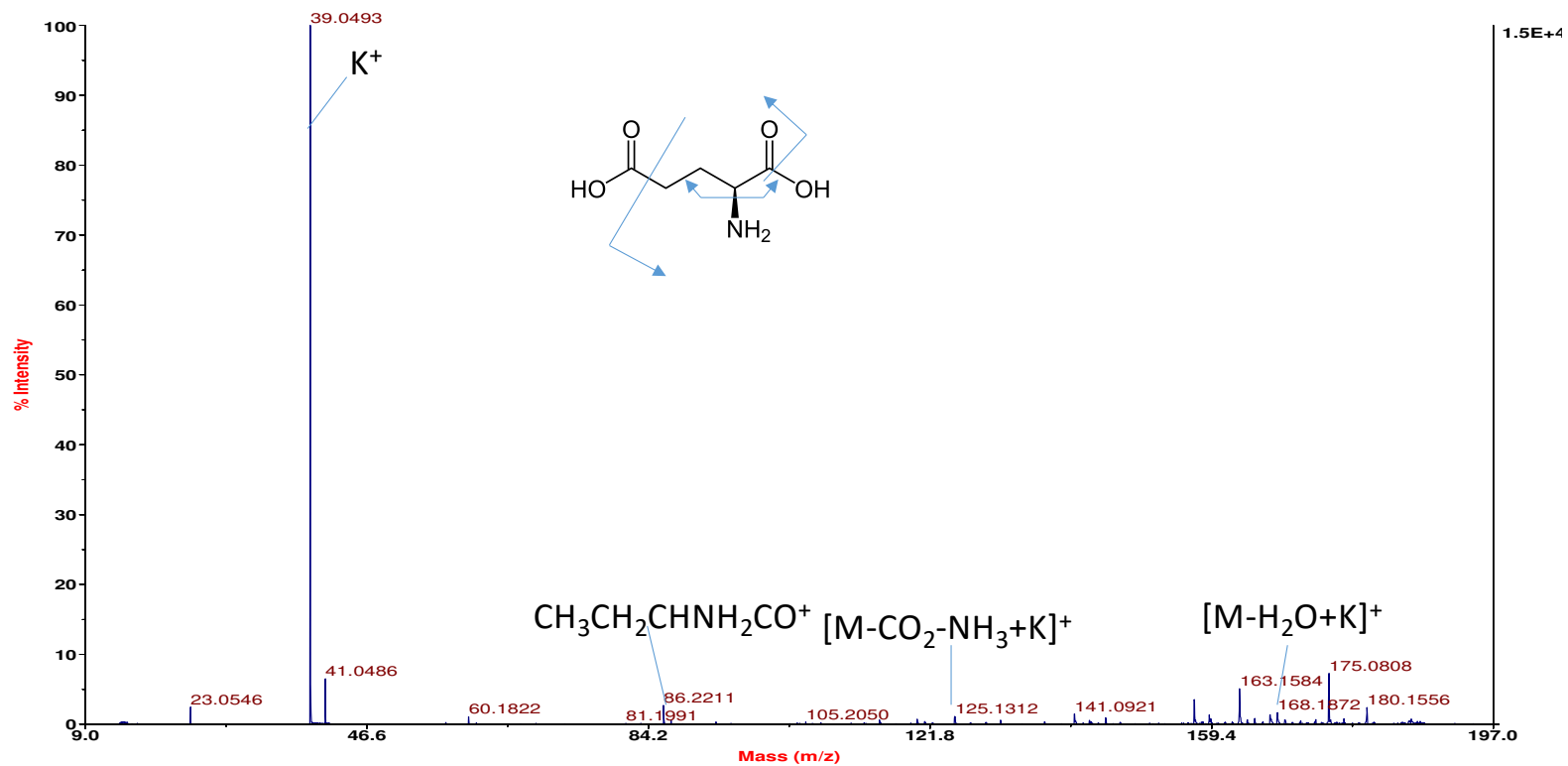
TOF/TOF™ MS/MS Precursor 185.009 Spec #1 MC[BP = 39.1, 17046]



D:\...L7_MSMS_185.0090_6.t2d
Acquired:

[Glutamic acid+K]⁺

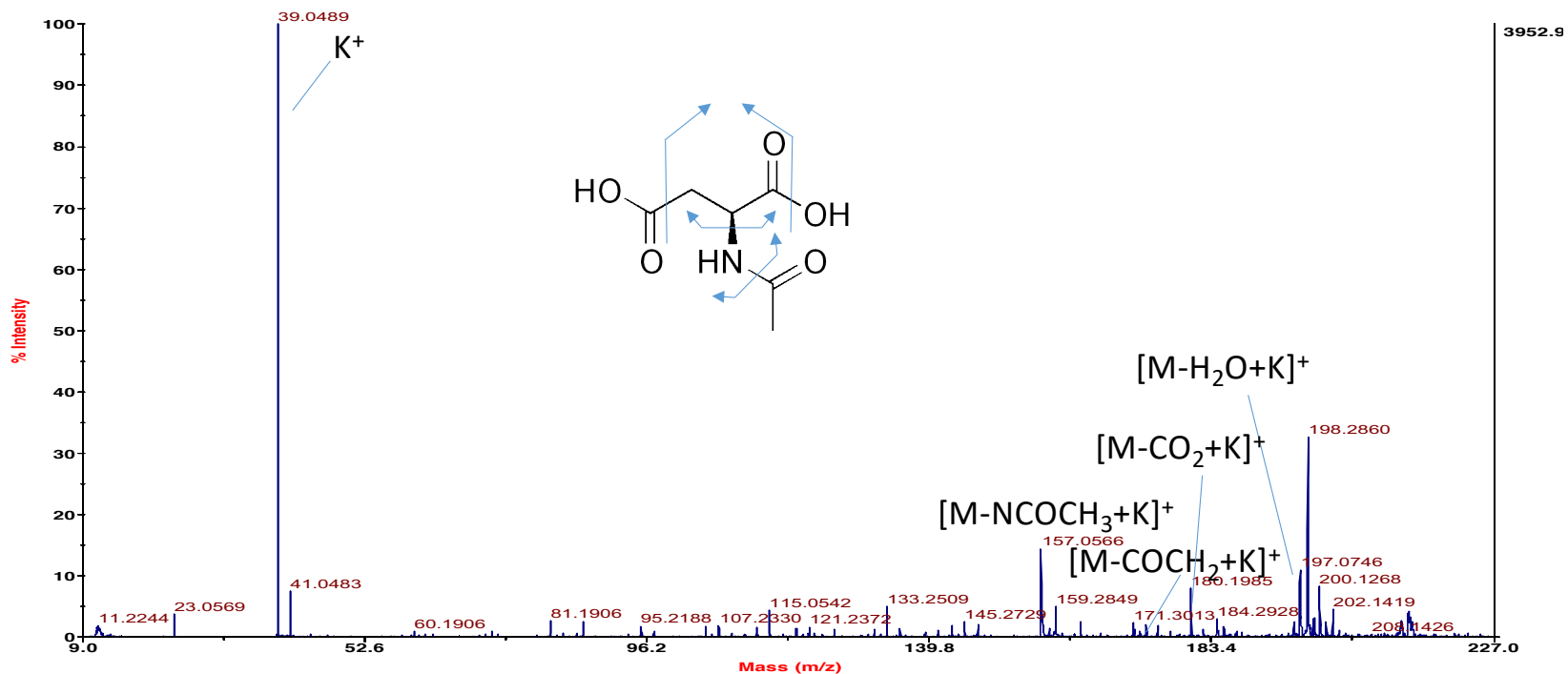
TOF/TOF™ MS/MS Precursor 185.994 Spec #1 MC[BP = 39.1, 14687]



D:\...L7_MSMS_185.9940_7.12d
Acquired:

[N-acetylaspartic acid+K]⁺

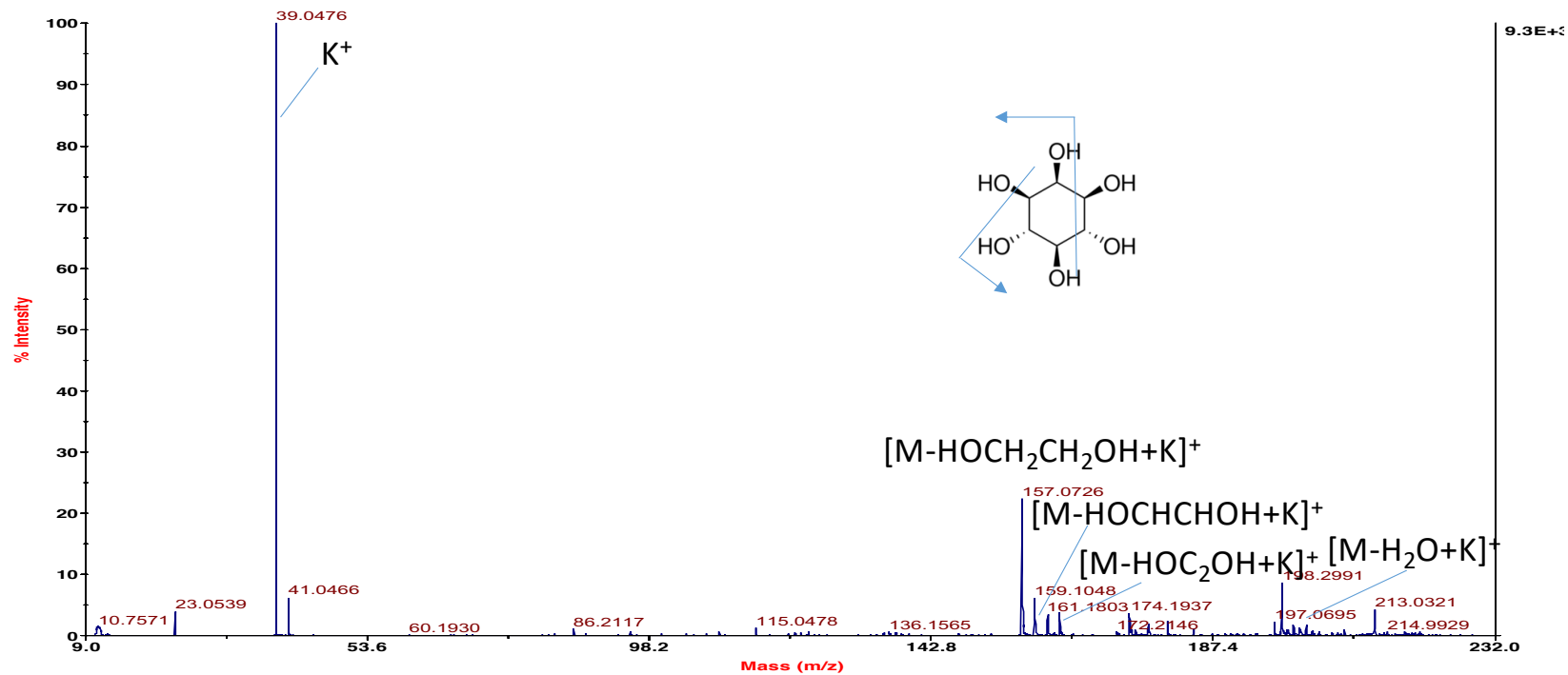
TOF/TOF™ MS/MS Precursor 213.982 Spec #1 MC[BP = 39.0, 3953]



D:\...AL7_MSMS_213.9820_10.12d
Acquired:

[Myo-inositol+K]⁺

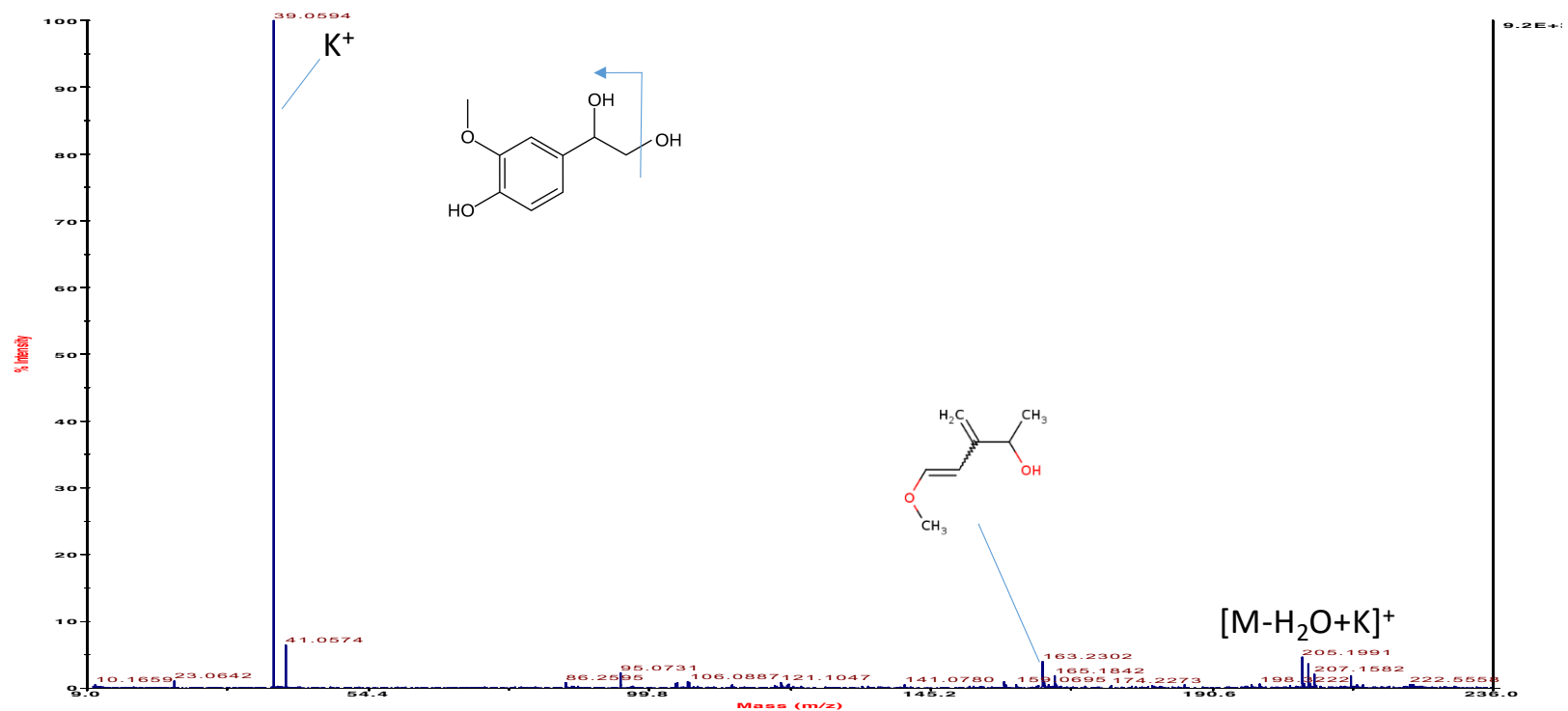
TOF/TOF™ MS/MS Precursor 218.997 Spec #1 MC[BP = 39.0, 9271]



D:\...L7_MSMS_218.9970_12.t2d
Acquired:

[3-Methoxy-4-hydroxyphenylglycol+K]⁺

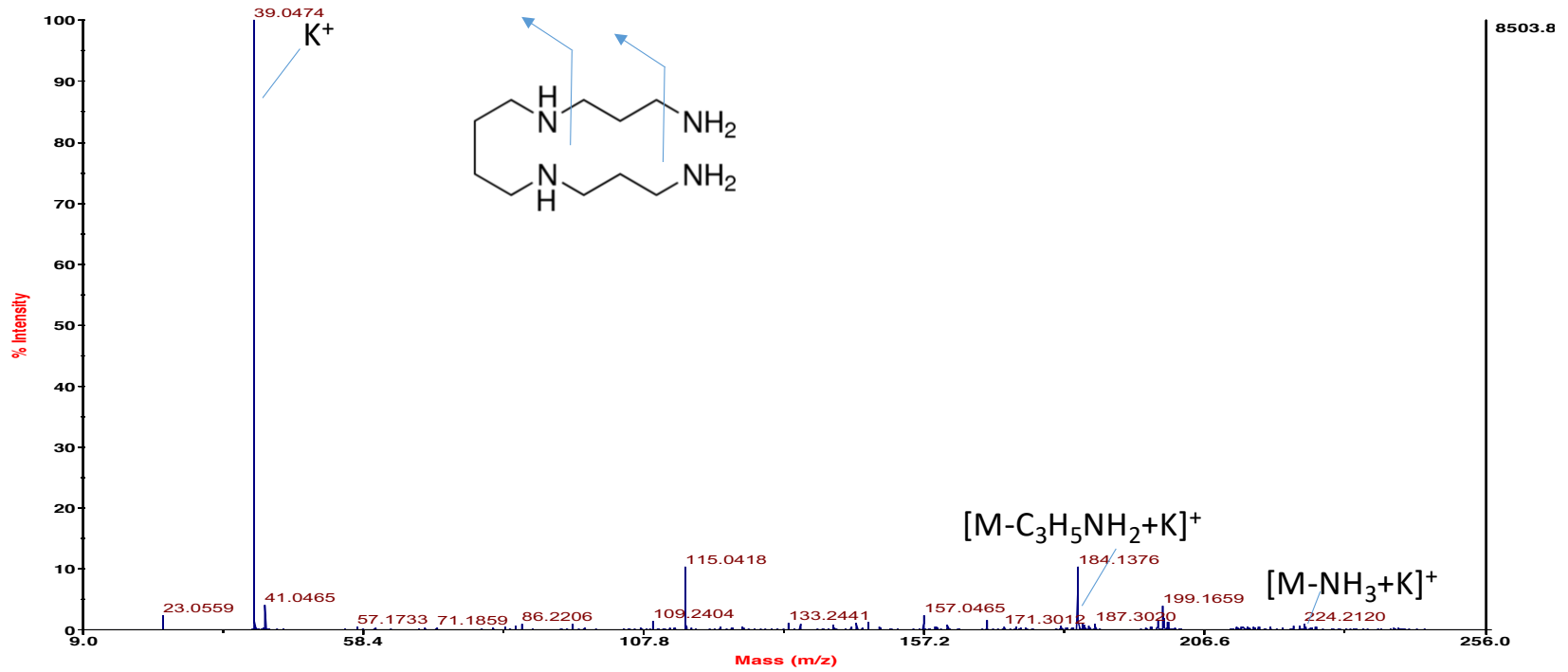
TOF/TOF™ MS/MS Precursor 223.03 Spec #1 MC[BP = 39.1, 9239]



D:\...D6_MSMS_223.0300_32.t2d
Acquired:

[Spermine+K]⁺

TOF/TOF™ MS/MS Precursor 241.146 Spec #1 MC[BP = 39.1, 8504]



D:\...L7_MSMS_241.1460_11.t2d
Acquired: