

8-1-2020

Hyperammonemic encephalopathy as a manifestation of Reye syndrome in a previously-healthy 14-year-old girl: A case report

Dara Petel
Schulich School of Medicine & Dentistry

Chitra Prasad
Schulich School of Medicine & Dentistry, chitra.prasad@lhsc.on.ca

Tony Rupar
Schulich School of Medicine & Dentistry

Simon Levin
Schulich School of Medicine & Dentistry

Andréanne N. Zizzo
Schulich School of Medicine & Dentistry, andreanne.zizzo@lhsc.on.ca

See next page for additional authors

Follow this and additional works at: <https://ir.lib.uwo.ca/paedpub>

Citation of this paper:

Petel, Dara; Prasad, Chitra; Rupar, Tony; Levin, Simon; Zizzo, Andréanne N.; Sharma, Ajay P.; and Tijssen, Janice A., "Hyperammonemic encephalopathy as a manifestation of Reye syndrome in a previously-healthy 14-year-old girl: A case report" (2020). *Paediatrics Publications*. 2019.
<https://ir.lib.uwo.ca/paedpub/2019>

Authors

Dara Petel, Chitra Prasad, Tony Rupar, Simon Levin, Andréanne N. Zizzo, Ajay P. Sharma, and Janice A. Tijssen



Hyperammonemic encephalopathy as a manifestation of Reye syndrome in a previously-healthy 14-year-old girl: a case report

Dara Petel¹, Chitra Prasad¹, Tony Rupar^{1,2}, Simon Levin¹, Andréanne N. Zizzo¹, Ajay P. Sharma¹, Janice A. Tijssen¹

¹Department of Paediatrics, ²Departments of Pathology and Laboratory Medicine and Biochemistry, Schulich School of Medicine and Dentistry, Western University, London, Ontario, Canada

Correspondence to: Dr. Janice A. Tijssen, MD. Department of Paediatrics, Western University, 800 Commissioners Road East, London, ON N6A 5W9, Canada. Email: Janice.Tijssen@lhsc.on.ca.

Abstract: Reye syndrome is seldom considered in the older child presenting with acute encephalopathy. The paucity of literature on Reye syndrome in the past 30 years highlights the importance of sharing new observations of this less-commonly considered disease. This case details an atypical presentation of Reye syndrome in an adolescent girl whose course was unexpectedly complicated by dialysis disequilibrium syndrome, occurring as a result of rapid metabolic shifts in the setting of urgent hemodialysis. A 14-year-old, previously healthy girl born to non-consanguineous Pakistani parents presented with acute-onset encephalopathy characterized by aggressive behaviour and altered level of consciousness. This was preceded by frequent vomiting and weeks of disordered eating. Laboratory findings included high anion-gap [30 (normal range, <14)] metabolic acidosis [pH 7.23 (normal range, 7.35–7.45), bicarbonate 10 mmol/L (normal range, 22–29 mmol/L)] with markedly elevated peak levels of lactate [13.6 mmol/L (normal range, 0.5–2.2 mmol/L)] and ammonia [573 μ mol/L (normal range, 11–48 μ mol/L)]. Emergent hemodialysis was undertaken for management of severe hyperammonemia, with subsequent worsening of cerebral edema, elevated intracranial pressure, and consequent uncal and tonsillar herniation, in keeping with the development of dialysis disequilibrium syndrome. The patient was ultimately diagnosed with Reye syndrome after extensive biochemical and molecular testing including exome sequencing were non-contributory. This diagnosis would be consistent with her poor nutritional state, depleted carnitine levels, mild liver dysfunction and hyperammonemia. Two weeks of intensive care were required. The patient was ultimately discharged to a rehabilitation facility with ongoing fatigue and regression in motor and cognitive domains. Hyperammonemic encephalopathy should prompt consideration for Reye syndrome. Hyperammonemia is a medical emergency; the extremely time-sensitive nature of hyperammonemia management mandates that ammonia level testing be undertaken for any unexplained encephalopathy. Severe elevations can result in neurological impairment, cerebral edema, and are acutely life-threatening. Hemodialysis may be indicated for levels >150 μ mol/L; the urgency of ammonia clearance must be balanced against the risk of developing dialysis disequilibrium syndrome.

Keywords: Brain edema; case report; hyperammonemia; renal dialysis; Reye syndrome

Received: 21 April 2020; Accepted: 24 July 2020; Published: 31 August 2020.

doi: 10.21037/pm-20-51

View this article at: <http://dx.doi.org/10.21037/pm-20-51>

Introduction

Metabolic disorders are less commonly considered in the older child presenting with acute encephalopathy; however, organic acidemias, urea cycle and fatty oxidation disorders

may present in adolescence. Reye syndrome may present in a similar manner, though there have been few published cases on this syndrome in the past several decades. Reye syndrome is characterized by acute encephalopathy and

liver dysfunction. It is thought to be precipitated by viral pathogens, and there is an established association with aspirin consumption (1). Reye syndrome may mimic many inborn errors of metabolism (IEM) (2). IEM comprise a large spectrum of disorders caused by enzyme or cofactor abnormalities resulting in either accumulation of toxic products or deficiency of essential end-products (3). IEM may predispose to Reye syndrome (1). Severe IEM present neonatally, with most conditions diagnosed by early childhood; however, several diseases present during adolescence and are often misdiagnosed due to a lower index of suspicion (3).

Hyperammonemia is common to the above etiologies, and requires urgent management. Depending on the degree of hyperammonemia, hemodialysis may be required. Though rare, dialysis disequilibrium syndrome (DDS) is a recognized complication of hemodialysis which may result from rapid metabolic shifts. Risk of this syndrome should be considered when rapid correction of hyperammonemia is required.

We present the following article in accordance with the CARE reporting checklist (available at <https://pm.amegroups.com/article/view/10.21037/pm-20-51/rc>).

Case presentation

A 14-year-old previously healthy girl presented to hospital with a 1-day history of sudden-onset aggressive behavioral changes and profoundly decreased level of consciousness. Further history revealed picky eating habits, with disordered eating for 3 weeks and a 2-day history of frequent vomiting. She was never febrile. The patient was developmentally normal, and born to non-consanguineous parents of Pakistani origin. Family history was non-contributory.

On presentation, the patient was tachycardic with bilateral extensor hypertonic posturing thought to be consistent with seizure activity, which resolved with intravenous lorazepam. She had an altered mental status with a Glasgow Coma Scale (GCS) of 8, and neurological examination was significant for bilateral brisk patellar reflexes, ankle clonus and positive Babinski sign. The remainder of her physical examination was unremarkable.

Initial laboratory work-up was consistent with a high anion-gap metabolic acidosis. Bloodwork demonstrated a pH of 7.23 (normal range, 7.35–7.45), pCO₂ of 25 mmHg (normal range, 35–45 mmHg), bicarbonate of 10 mmol/L (normal range, 22–29 mmol/L), and lactate of 13.6 mmol/L (normal range, 0.5–2.2 mmol/L). Anion gap was 30

(normal range, <12) [sodium 142 mmol/L (normal range, 135–145 mmol/L), chloride 101 mmol/L (normal range, 98–107 mmol/L)], and osmolar gap was 13 (normal range, <10). Urea was 5.9 mmol/L (normal range, <8 mmol/L) and creatinine was 70 µmol/L (normal range, 55–100 µmol/L). Toxicology screen was negative. There was mild leukocytosis and C-reactive protein was unremarkable. Initial computed tomography (CT) head was unremarkable, without edema, hemorrhage or infarct.

Eight hours after admission, ammonia level was 471 µmol/L (normal range, 11–48 µmol/L). Liver enzymes were mildly elevated with ALT of 75 units/L (normal range, <33 units/L) and aspartate aminotransferase (AST) of 92 units/L (normal range, <32 units/L). International normalized ratio (INR) was 2.1 (normal range, 0.9–1.1), but liver function tests were otherwise unremarkable. A second sample confirmed hyperammonemia, with ammonia peaking at 573 µmol/L (*Figure 1*).

Ceftriaxone, vancomycin and acyclovir were initiated for presumed infectious encephalitis on admission. Given the strongly suspected metabolic etiology, dietetics and metabolics teams were involved early. Hemodialysis was initiated urgently upon confirmation of severe hyperammonemia, with a starting blood flow rate of 5 mL/kg/min and dialysate flow rate of 8.5 mL/kg/min.

During hemodialysis, the patient developed bradycardia, hypertension and a dilated right pupil, which was aggressively medically managed. Hemodialysis resumed, without any change in dialysis flow rate. The dilated pupil recurred, and subsequent CT scan confirmed cerebral edema with tonsillar and uncal herniation. These events were felt to be consistent with DDS. Intracranial pressure (ICP) monitoring was implemented, with initial pressures up to 35 mmHg. Her ICP was medically managed. External ophthalmoplegia developed, but subsequently improved.

Initial magnetic resonance (MR), including angiography and spectroscopy of the head, demonstrated only subtle thalamic changes on the diffusion-weighted image sequence. A subsequent MR on day 6 demonstrated increased diffusion restriction in the bilateral thalami, frontal lobes and insulae. This represented a significant deterioration in neuroimaging findings (*Figure 2*). MR on day 12 demonstrated abnormal subcortical white matter high signal on T2 and flair within the cerebral hemispheres. Electroencephalography (EEG) initially demonstrated severe diffuse encephalopathy, which improved over the next 2 weeks.

Protein was initially restricted, with diet normalization

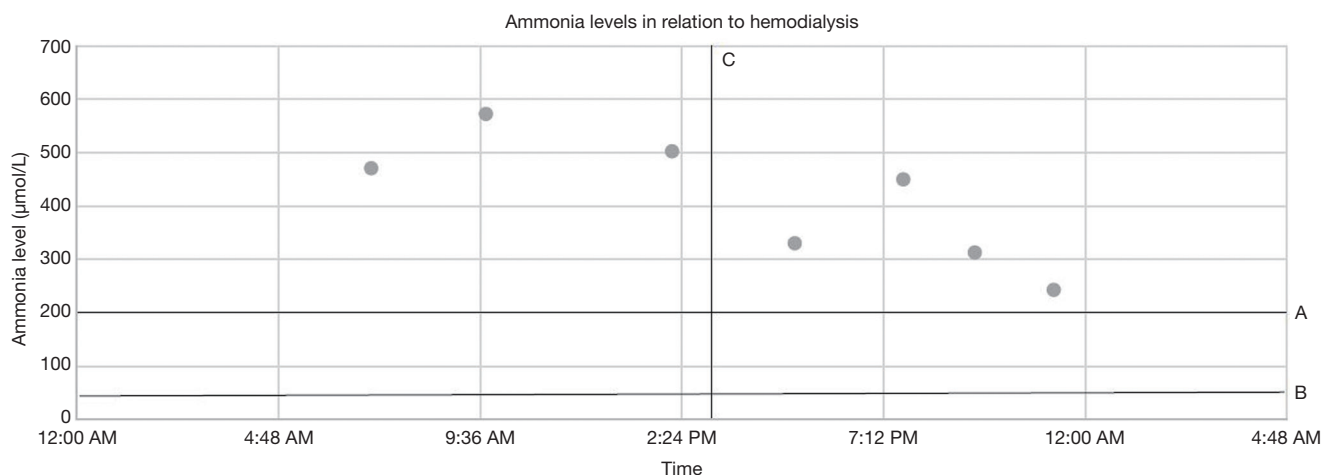


Figure 1 Serum ammonia levels in relation to hemodialysis. Graphical display of serum ammonia levels and time of sample collection. Hemodialysis initiated at 3:07 p.m. for 5 hours (dialysate flow rate of 8.5 mL/kg/min; blood flow rate of 5 mL/kg/min). (A) Threshold for terminating hemodialysis; (B) upper range of normal of ammonia; (C) time of hemodialysis initiation.

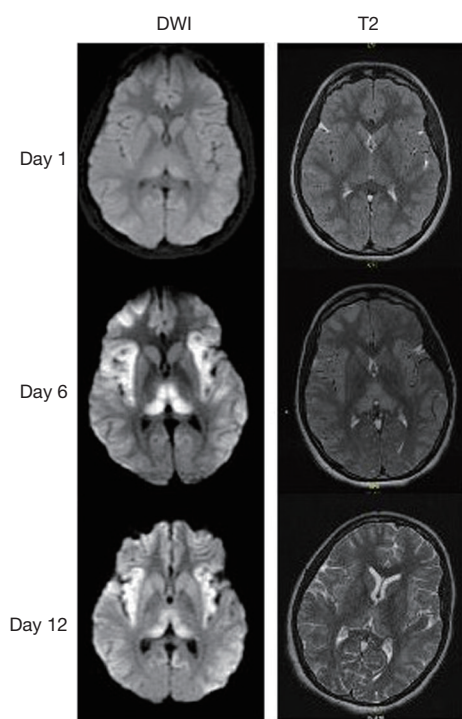


Figure 2 Evolution of MR head images over time (at the level of the basal ganglia). Day 1: diffusion weighted image (DWI)—subtle restricted diffusion of the posterior thalami bilaterally. T2—sulcal effacement. Day 6: DWI—increased diffusion restriction of the thalami and bilateral insular/frontal/temporal/parietal cortices. T2—corresponding subtle hyperintensities. Day 12: DWI—unchanged. T2—subtle high signal in bilateral subcortical white matter, less sulcal effacement. MR, magnetic resonance.

4.5 weeks post-admission, with transfer to a pediatric neurological rehabilitation centre. The patient was instructed not to skip meals and to consume three snacks daily. An emergency protocol was provided. Treatment with citrulline and phenylbutyrate, which had been initiated with the finding of hyperammonemia, was discontinued after negative urea cycle disorder testing and ammonia level stabilization. The patient has significant behavioural issues and is 3–4 years cognitively delayed. Ammonia levels remain normal.

A comprehensive investigation for IEMs causing hyperammonemia was non-diagnostic. Plasma amino acids indicated grossly elevated glutamine >3,800 µmol/L (normal range, 109–750 µmol/L), normal arginine, modestly elevated citrulline and no argininosuccinic acid. Urine organic acids indicated significant amounts of lactic and pyruvic acids, ketones and several dicarboxylic acids; plasma acylcarnitine profile demonstrated similar elevated metabolites. The patient’s fasting state prior to sample retrieval may explain the above results. A modestly elevated urine orotic acid was extensively investigated with an allopurinol challenge test and single-gene sequencing of ornithine transcarbamylase (OTC) with negative results. Free carnitine was low at 4 µmol/L (normal range, 20–53 µmol/L), and acylcarnitines were high at 69 µmol/L (normal range, 5–20 µmol/L). Both normalized with therapy. Urine was negative for methylmalonic acid. Lumbar puncture week 2 of admission demonstrated a white blood cell (WBC) count of $1 \times 10^6/L$, normal protein at 183 mg/L

and lactate at 1.6 mmol/L. Infectious workup was negative. Extensive genetic testing including whole exome sequencing and comprehensive panels for mitochondrial, fatty acid oxidation and urea cycle diseases produced negative results. In the context of this negative workup, a diagnosis of Reye syndrome was ultimately made.

All procedures performed in studies involving human participants were in accordance with the ethical standards of the institutional and/or national research committee(s) and with the Helsinki Declaration (as revised in 2013). Written informed consent was obtained from the patient's substitute decision maker.

Discussion

Altered level of consciousness (ALOC) with high anion-gap metabolic acidosis carries a wide differential diagnosis, including lactic acidosis secondary to shock, advanced renal or hepatic disease, toxic ingestions, diabetic ketoacidosis, mitochondrial disorders, organic acidemias and fatty acid oxidation disorders. The patient did not exhibit signs of shock in keeping with her extreme lactic acidosis, glucose was normal and final toxicology screen was negative. Hyperammonemia makes a primary mitochondrial disorder unlikely.

An IEM featuring hyperammonemia and presenting in adolescence is most suspicious for a urea cycle defect, primarily OTC deficiency (4). While patients with complete urea cycle defects present neonatally, those with partial defects may present at older ages with intermittent symptomatic hyperammonemia (3). Compatible features in our patient include psychiatric symptoms, mental status change, encephalopathy, and chronic protein avoidance (3). However, metabolic acidosis is not typical of urea cycle disorders and is more common with organic acidemia or fatty acid oxidation disorders. Additionally, later ammonia levels remained normal without medical therapy, making this diagnosis unlikely.

The unremarkable metabolic and genetic investigations prompt consideration for Reye syndrome. Reye syndrome is classified by encephalopathy and hepatopathy defined by features on liver biopsy or three-fold or greater increase in either transaminases or in serum ammonia (1,5). Criteria for both encephalopathy and hyperammonemia were satisfied in our patient, and laboratory abnormalities were consistent with Reye syndrome, including increased liver enzymes, elevated INR, metabolic acidosis, decreased bicarbonate and normal cerebrospinal fluid (CSF) WBC (1). In this context,

a liver biopsy was not performed. Low carnitine level is consistent with Reye syndrome, as is our patient's preceding poor nutritional state (6). Treatment entails supportive care in an intensive care setting, with anticipatory management of hemodynamic and respiratory stability. Supportive management is indicated for increased ICP and edema, hyperammonemia, coagulopathy, metabolic acidosis and hypoglycemia. Beyond the provision of supportive care, no additional therapy is available. Incidence has declined significantly since warnings against aspirin use in children, from 10 to 1 per million children in the United States (2,7). Mortality rate is about 20%, with residual neurological deficits common in those with hyperammonemia (1).

Regardless of underlying etiology, hyperammonemia is a medical emergency. Severe elevations can result in neurological impairment, cerebral edema, and be acutely life-threatening. Initial management includes minimizing ongoing ammonia production by restricting protein intake and catabolism. Hydration with dextrose 10% solution is provided at (1–1.5)× maintenance rate and caloric intake optimized with provision of intravenous lipids at 1–2 g/kg/day. Enteral protein-restricted feeding should be introduced as soon as possible. Ammonia production can be further curtailed using nitrogen scavenger medications. IV L-arginine promotes nitrogen excretion and is also recommended. When the diagnosis is unclear, cofactors including L-carnitine and vitamin B12 should be initiated due to their possible benefit in treating organic acidemia; L-carnitine may also be useful in organic acidemia, fatty acid oxidation disorders and carnitine deficiency. Severe elevations in ammonia levels (>1,000 µmol/L) or failure to adequately respond to therapy as demonstrated by either persistently elevated ammonia levels (>400 µmol/L) or rapid rise in levels (to >300 µmol/L) despite therapy mandate treatment with hemodialysis or continuous hemodiafiltration (8,9); however, earlier treatment (at levels >150 µmol/L) should be considered in cases of deteriorating neurological status, moderate to severe encephalopathy, coma, and cerebral edema (8,9).

Excess ammonia reacts with glutamic acid to produce glutamine, leading to increased intracellular osmolarity and cytotoxic cerebral edema (4). Plasma glutamine concentration reached >3,800 µmol/L coincident with peak plasma ammonia levels. Balancing the urgent need to correct severe hyperammonemia with hemodialysis and the risk of DDS with rapid correction poses a clinical dilemma. DDS is a rare complication of hemodialysis classified by neurological deterioration with cerebral edema

and increased ICP (10). Symptoms may include headache, confusion, restlessness and coma (10). Predisposing factors include first hemodialysis treatment, seizure disorder, preceding neurological disorder, severe uremia and younger age, and rate of urea removal plays a critical role (10,11). Elevated urea concentration at hemodialysis initiation is highly contributory; our patient's normal serum urea level should have significantly lowered the risk for DDS (11). Treatment is supportive, aimed at controlling intracranial hypertension, though mortality rate is high (10). The main preventative mechanism is slowing the rate of urea clearance, running in direct opposition to the urgent need to correct hyperammonemia. The challenge of weighing our patient's significant neurological deterioration within the first 24 hours of presentation, presumably related to advancing toxic changes from hyperammonemia, against the supposedly rare risk of DDS presented a therapeutic dilemma.

Overall prognosis of hyperammonemia is largely dependent upon underlying etiology and clinical characteristics such as duration and degree of hyperammonemia. Poor neurological outcome is correlated with ammonia level $>400 \mu\text{mol/L}$, age <1 month and coma lasting >72 hours (12). Outcome can be optimized by increasing provider awareness and immediate initiation of therapy (13).

This case report presents important observations on the clinical manifestations, diagnosis, treatment, and outcomes of Reye syndrome in a previously healthy adolescent. This is especially relevant given the sparse published literature on this syndrome in the last several decades, and serves as a reminder to pediatric practitioners to consider hyperammonemia and the potential of Reye syndrome when evaluating pediatric patients with acute encephalopathy. As well, this case report describes a rare complication of hemodialysis: DDS. DDS may occur with rapid clearance of ammonia and should be anticipated as a potential complication of aggressive management of hyperammonemia. Though this patient met diagnostic criteria for Reye syndrome, it is important to note that this is a diagnosis of exclusion, and that this patient had an atypical presentation without any history of exposure to aspirin. No standardized assessments were used to follow long-term developmental outcome for this patient.

The extremely time-sensitive nature of hyperammonemia management mandates that ammonia testing be part of the workup for unexplained encephalopathy at any age. Treatment focuses on minimizing ammonia production and optimizing clearance. DDS is a rare complication

of intermittent hemodialysis but should be considered if increased ICP occurs in the context of rapid metabolic shifts. Reye syndrome must be considered when metabolic testing remains inconclusive.

Acknowledgments

We thank the patient and her family for allowing us to share their information.

Funding: None.

Footnote

Reporting Checklist: The authors have completed the CARE reporting checklist. Available at <https://pm.amegroups.com/article/view/10.21037/pm-20-51/rc>

Conflicts of Interest: All authors have completed the ICMJE uniform disclosure form (available at <https://pm.amegroups.com/article/view/10.21037/pm-20-51/coif>). The authors have no conflicts of interest to declare.

Ethical Statement: The authors are accountable for all aspects of the work in ensuring that questions related to the accuracy or integrity of any part of the work are appropriately investigated and resolved. All procedures performed in studies involving human participants were in accordance with the ethical standards of the institutional and/or national research committee(s) and with the Helsinki Declaration (as revised in 2013). Written informed consent was obtained from the patient's substitute decision maker.

Open Access Statement: This is an Open Access article distributed in accordance with the Creative Commons Attribution-NonCommercial-NoDerivs 4.0 International License (CC BY-NC-ND 4.0), which permits the non-commercial replication and distribution of the article with the strict proviso that no changes or edits are made and the original work is properly cited (including links to both the formal publication through the relevant DOI and the license). See: <https://creativecommons.org/licenses/by-nc-nd/4.0/>.

References

1. Chapman J, Arnold JK. Reye Syndrome. [Updated 2019 Jan 17]. In: StatPearls [Internet]. Treasure Island (FL): StatPearls Publishing, Jan 2019.
2. Belay ED, Bresee JS, Holman RC, et al. Reye's syndrome

- in the United States from 1981 through 1997. *N Engl J Med* 1999;340:1377-82.
3. Ahrens-Nicklas RC, Slap G, Ficicioglu C. Adolescent presentations of inborn errors of metabolism. *J Adolesc Health* 2015;56:477-82.
 4. Wendell LC, Khan A, Raser J, et al. Successful management of refractory intracranial hypertension from acute hyperammonemic encephalopathy in a woman with ornithine transcarbamylase deficiency. *Neurocrit Care* 2010;13:113-7.
 5. Pugliese A, Beltramo T, Torre D. Reye's and Reye's-like syndromes. *Cell Biochem Funct* 2008;26:741-6.
 6. Matsuda I, Ohtani Y. Carnitine status in Reye and Reye-like syndromes. *Pediatr Neurol* 1986;2:90-4.
 7. Sullivan KM, Belay ED, Durbin RE, et al. Epidemiology of Reye's syndrome, United States, 1991-1994: comparison of CDC surveillance and hospital admission data. *Neuroepidemiology* 2000;19:338-44.
 8. Savy N, Brossier D, Brunel-Guitton C, et al. Acute pediatric hyperammonemia: current diagnosis and management strategies. *Hepat Med* 2018;10:105-15.
 9. Raina R, Bedoyan JK, Lichter-Konecki U, et al. Consensus guidelines for management of hyperammonaemia in paediatric patients receiving continuous kidney replacement therapy. *Nat Rev Nephrol* 2020;16:471-82.
 10. Zepeda-Orozco D, Quigley R. Dialysis disequilibrium syndrome. *Pediatr Nephrol* 2012;27:2205-11.
 11. Lopez-Almaraz E, Correa-Rotter R. Dialysis disequilibrium syndrome and other treatment complications of extreme uremia: a rare occurrence yet not vanished. *Hemodial Int* 2008;12:301-6.
 12. Paprocka J, Jamroz E. Hyperammonemia in children: on the crossroad of different disorders. *Neurologist* 2012;18:261-5.
 13. Häberle J. Clinical practice: the management of hyperammonemia. *Eur J Pediatr* 2011;170:21-34.

doi: 10.21037/pm-20-51

Cite this article as: Petel D, Prasad C, Rupar T, Levin S, Zizzo AN, Sharma AP, Tijssen JA. Hyperammonemic encephalopathy as a manifestation of Reye syndrome in a previously-healthy 14-year-old girl: a case report. *Pediatr Med* 2020;3:16.