
**Confirmed Tornado
Pembroke, Ontario
October 25, 2001**

Date- Local: Thursday, October 25th, 2001

UTC: Thursday, October 25th, 2001

Time- Local: 0700

UTC: 1100

Location: Pembroke

Region: Pembroke-Renfrew-Barry's Bay

Classification: Confirmed Tornado

Category: C

Casualties: None

Track Length: None available

Width: None available

Motion: None available

Damage Estimate: \$50 000-\$100 000

F-Scale Rating: F1

Code: BS

Damage Survey: D. Paradis EC, photos and map only

Spotter Reports: One

Other Documents:

Summary of Event by Sarah J. Scriver, MSC King Radar Severe Weather

Research Assistant

Map of Damage location, D. Paradis, EC

Newspaper Articles

sjs

Meteorological Service of Canada
4905 Dufferin Street, ARMP
Downsview, Ontario M3H 5K6
CANADA

Tornado F-Scale Assessment

Sarah J. Sriver

Tornado Data Production Assistant, Environment Canada

April 22nd, 2004

Classification: Confirmed Tornado

Date: October 25th, 2001

Location: Pembroke, Pembroke-Renfrew-Barry's Bay Region

Assessment: F1

F-Code: BS

Explanation of Assessment: Roof of shed removed. Part of roof of a Best Western damaged. Sign damaged.

SJS

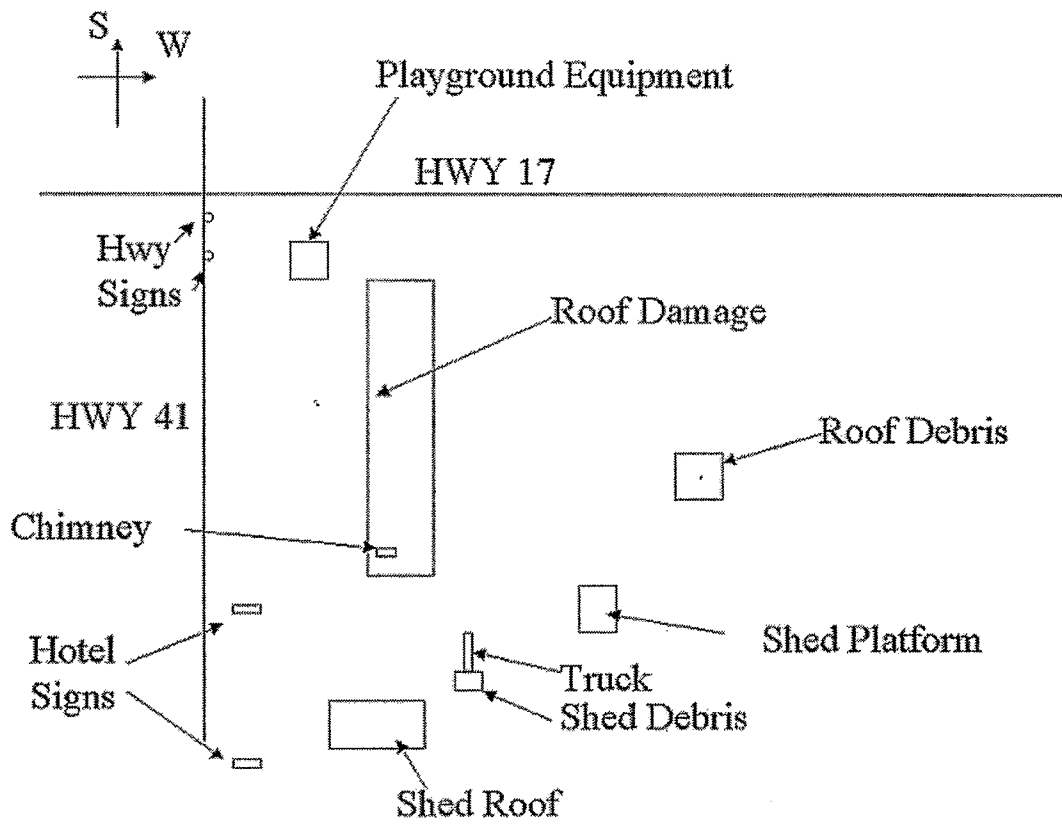
Meteorological Service of Canada
4905 Dufferin Street, ARM
Downsview, Ontario M3H
CANADA

Confirmed Tornado
Category: C
Pembroke, Ontario
Thursday, October 25, 2001

The tornado that occurred at 0700 in Pembroke on Thursday, October 25, 2001 can be definitively rated an low F1. It tore two sheds apart, leaving only partial walls behind, took part of the roof of the corner of a Best Western off, lifted a truck and dropped it into the shed debris, blew in some hotel signs and a truck window, broke a picnic table into several pieces, and shifted and deformed a childrens' wooden swing set and slide playground equipment.

Although no one saw the tornado, its confirmation was based upon the numerous photos (Paradis 2001), a map detailing the location of each of the larger pieces of debris, and its narrow damage path. When one draws vectors depicting the direction of travel of each piece of debris relative to its source, rotation is clearly visible. For example, the shed debris was thrown to the NE, while the roof debris sailed WSW.

This tornado was unusual for three reasons. One, the Pembroke area is not prone to having many tornadoes. Two, it was extremely late in the year for a tornadic event, being the final week of October. Thirdly, tornadoes almost never occur early in the morning, and 7:00 am is one of the lowest points in tornadic activity.



Pembroke, Thursday, October 25th, 2001 Storm
 Damage locations, damage photos by D. Paradis, EC

Spotter Reports, October 25, 2001

CLASSIFICATION: Severe Thunderstorm **SOURCE/WATCHER ID:** Best Western General Manager in Pembroke **EVENT TIME (UTC):** 11-30 **EVENT DAY:** 25.0 **MONTH:** 10.0 **YEAR:** 2001.0 **EVENT DURATION (HR):** 0.0 **(MIN):** 0.0 **DAY OF THE WEEK:** **EVENT LOCALE:** Intersection of Highway 17 and Highway 41 Pembroke **ASOCTD PUBLIC RGN:** Renfrew **DETAILED DESCRIPTION:** "1. Highway signs knocked over 2. Hotel signs knocked over 3. Mangled picnic table" **INITIAL ASSESSMENT:** NEAR-SEVERE **SPL WX STATEMENT IN EFFECT ?:** YES **STATEMENT LEAD TIME (HR): (MIN):** **WATCH IN EFFECT ?:** NO **WATCH LEAD TIME (HR): (MIN):** **WARNING IN EFFECT ?:** NO **WARNING LEAD TIME (HR): (MIN):** **TORNADO:** NO **WINDSPEED:** **RAINFALL:** MM **RAIN DURATION:** **HAIL DIAMETER:** MM **HAIL DESCRIPTION:** None **EVENT DESCRIPTION:** Wind **Mesoscale ?:** **Synoptic ?:** **Big Event ?:** **Statement Est Hit/Miss:** UKN **Watch Est Hit/Miss:** UKN **Warning Est Hit/Miss:** UKN **Separate Event (30km/30min):** NO **Vetted by:** LEE **Vetted date:** 01/03/2002