

TORNADO PROJECT SUMMARY SHEET

F=UNKNOWN ONT

1. DATE AND TIME SAT 24TH OCT 1959 (PM OR EVE)

2. LOCATION OR PATH (attach map) ALONG C.P.R. LINE FOR ABOUT 1 MILE IN THE VICINITY OF OCONTO. (ABOUT 5 MILES SOUTH OF SHARBOT LAKE)
FROM 340°? (P.E.) 06959-05

3. PATH LENGTH NOT KNOWN <1mi; 1-4mi; 5-10mi; 11-50mi; LENGTH IF >50mi

4. PATH WIDTH UNKNOWN 5. TORNADO PART OF SQUALL LINE? YES; NO; UNKNOWN:

6. ANY UNUSUAL COLORATION? YES; NO; UNKNOWN

7. ANY UNUSUAL SOUND? YES; NO; UNKNOWN

8. IF ANSWER TO 6 OR 7 YES, ELABORATE;

9. LIST ANY ASSOCIATED PHENOMENA (Such as hail, vivid lightning heavy rain, no rain, etc.) UNKNOWN

10. TOTAL DAMAGE ESTIMATE \$ UNKNOWN 11. TOTAL DEATHS NONE

12. TOTAL INJURED NONE 13. TOTAL HOMELESS NONE

14. LIST ALL REFERENCES MR STODDART, C.P.R. DISPATCHER

15. SUMMARIZE REMARKS PERTAINING TO (a) FUNNEL; (b) INTERESTING OR CAPRICIOUS EVENTS.
NO MENTION THAT A FUNNEL WAS OBSERVED
APPARENTLY FOLLOWED THE R.R. TRACK FOR ABOUT 1 MILE LEVELING ALL TREES AND STREWING THE RAILWAY LINE WITH TELEGRAPH POLES AND THE TREES.
THUNDERSTORMS WERE REPORTED IN THE KILLALOE, OTTAWA, AND MONTREAL AREA LATE SATURDAY AFTERNOON AND EVENING

WORKSHEET

IDTO 0695905

① ORIGIN x 18367700
 y 4850800

⑤ Standard Error S_x
 C 500

② LIFT-OFF x_1 18368200
 y_1 4850000

⑥ Standard Error S_y
 C 500

③ $(x_1 - x) = 500$

④ $(y - y_1) = 800$

⑦ DAMAGE LENGTH

$$L = [(x_1 - x)^2 + (y - y_1)^2]^{1/2}$$

③+④ $\rightarrow r, \theta = 943 \text{ m}$

⑧ $\alpha = \tan^{-1} \frac{|y - y_1|}{|x - x_1|}$
 $x \leftrightarrow y = 58^\circ$

⑨ Standard Error $S_L = (S_x^2 + S_y^2)^{1/2}$

⑤+⑥ $\rightarrow r, \theta = 707 \text{ m}$

⑩ $\beta = \frac{\tan^{-1} S_L}{L}$

⑦+⑨ $\rightarrow r, \theta$
 $x \leftrightarrow y = 37^\circ$

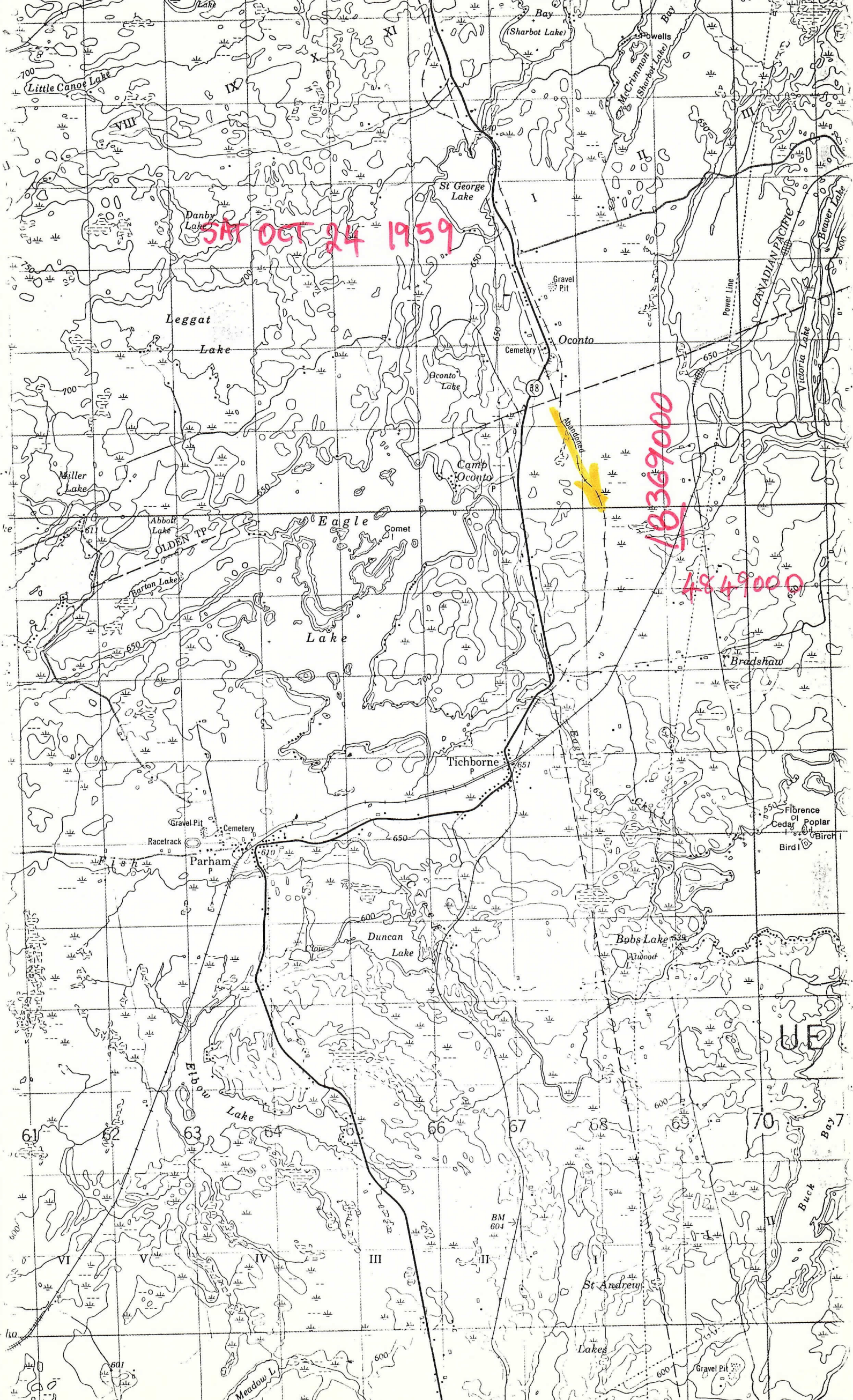
NE Quad $\phi = 90 - \alpha$

NW Quad $\phi = 270 + \alpha$

SW Quad $\phi = 270 - \alpha$

SE Quad $\phi = 90 + \alpha$

⑪ $\phi = 328^\circ$



SAT OCT 24 1959

18369000

4849000

Abandoned

Mr. (N. S. [unclear])

1900ES/ 25 OCT/59

→ 24TH OCTOBER

FOR YOUR INFORMATION, MR STODDART (CPR DISPATCHER) PHONED TO REPORT EXTENSIVE DAMAGE SATURDAY AFTERNOON OR EVENING ALONG CPR LINE ABOUT 10 MILES SOUTH OF SHARBOT AND NORTH OF TICHBORNE VICINITY OCONTO (39 Q ON HIGHWAYS MAP). APPARENTLY SMALL WINDS CUT A SWATH ABOUT MILE LONG LEVELLING ALL TREES AND STREWING RAILWAY LINE WITH TELEGRAPH POLES AND SAID TREES. THERE WERE THUNDERSTORMS IN XI OW UL AREA LATE SAT AFTN AND EVE - ONE OF THESE MUST HAVE BEEN A DOOZER

THIS JUST FOR YOUR INFO. NO ACTION REQUIRED.

T.L.W.

(16)

PM OR EVE SAT OCT 24 1959

ALONG CPR TRACK IN VICINITY OF OCONTO

DA

EDITION 1

