

Summary Sheet

IDTO - ID Number :694616  
 AUTH - Report Author :  
 TYFU - Tornado Type & Fuji Code :c1  
 TITL - Report Title or Location :Hamilton  
 PROV - Province :Ontario  
 COUN - Counties :Hamilton-Wentworth  
 REFS - References :GM July 25, 1946  
 ZOTO - Touchdown Zone Number & Easting :17592000  
 NOTO - Touchdown Northing :4789450  
 LOVA - Touchdown Error Value & Code :150c  
 DADA - Date of Data Entry :13/06/1990  
 ZOLO - Liftoff Zone Number & Easting :17593000  
 NOLO - Liftoff Northing :4789000  
 UPVA - Liftoff Error Value & Code :150c  
 DEAD - Number of Fatalities :  
 HURT - Number of People Injured :2  
 HERT - Injuries Code :  
 DATA - Date of Tornado :24/07/1946  
 DAVA - Date Error Value & Code :  
 TITO - Time of Tornado :1220  
 TIMR - Time Meridian :75  
 TIVA - Time Error Value & Code :15c  
 AXDA - Maximum Path Width :  
 AXVA - Max. Path Width Error & Code :  
 AVDA - Average Damage Width :  
 AVVA - Avg. Damage Width Error & Code :  
 SADA - Sample Damage Width :  
 SAVA - Sample Damage Width Error & Code :  
 INTO - Initials :JAM  
 DFTO - Detailed Report Flag :n  
 JUNK - PRDA & DIMO & DALE :  
 CODA - Property Damage Code :5  
 MISC - ORDE,PICS\_TYPE,PICS\_AVAIL,COCO :1112  
 MANY - Multiple Event Flag :n

MEMO:Part of roof torn off factory and carried 50 feet. 2 injuries at factory, both of which were minor. Trees uprooted and broken.

PHEN - Associated Phenomena :P  
 TSHP - Townships :Hamilton

JAM, 13/06/1990

THE GLOBE AND MAIL, THURSDAY JULY 25TH. 1946.

STORM DATE. 1:20 P.M., WED. JULY 24TH. 1946.

NEAR-TORNADO STORM HITS HAMILTON FACTORY.

HAMILTON, JULY 24. (Staff) An electrical and rainstorm of near-tornado proportions lashed HAMILTON early this afternoon, ripping part of a roof off a downtown factory and felling trees and hydro wires. Thousands of dollars damage was caused in a few minutes.

Heaviest hit was the ONTARIO BOX FACTORY, 106-120 MAIN ST. E., where the wind tore off a large section of the roof. Two employees working on the second floor assembly room were slightly hurt dashing for safety.

Witnesses marvelled that no one was badly hurt or killed when the roof was lifted off with a grinding crash and broke into sections which were hurled 50 feet. Two of four autos parked on a gasoline service station at the southeast corner of MAIN and CATHERINE STREETS were damaged by the debris.

HURLED UNDER MACHINE.

FRED SETZKORN, foreman in the box factory, received minor scratches on the face when he scrambled head first under the hand-hole machine he was operating at the time of the first crash. "I crawled under there to protect myself and I guess I bumped my face," he said before washing the dried blood off his face.

"I was too scared to notice what it was," said EUGENE FIFIELD, who was trying to close a big door at the rear of the factory's second floor. He thought it was the wind that "just lifted the roof off." He slid down a chute at the side of the building and dropped to a wagon below.

JACK WINTEMUTE, of 44 SPRING STREET, was helping FIFIELD with the dorr when he saw "the roof go up and come down. I banged my arm running away," he said. Another employee who escaped unhurt was RICHARD SORA.

The wind, besides ripping off a section of roof about 50 by 25 feet, pulled down a section of the rear brick wall. The bricks and splintered roof boards littered the assembly room after the storm. J. H. LECKENBY, manager, said the loss was covered by insurance. Plant operations were suspended.

An automobile belonging to J. R. SCOTT, of BINBROOK, was badly damaged by a jagged section of the factory roof carried by the wind to the service station. The hood and roof were flattened by the debris. Another car several feet away owned by J. P. SCILLEN, of 44 PAISLEY AVE. N., HAMILTON, was dented and its rear window smashed.

The tornado-like part of the storm lasted not more than a few minutes at 1:20 p.m.

AT least 20 large trees in the central part of the city were uproot-  
ed. Trees were felled on <sup>F-10</sup> VICTORIA AVE. S., <sup>F-10</sup> WELLINGTON ST. S., <sup>D-16</sup> WEST AVE., <sup>D-13</sup> BALSAM  
AVE., <sup>F-11</sup> EMERALD and <sup>F-13</sup> KING STS., and CUMBERLAND AVE.

Civic Works Department crews, handicapped because many men were  
at the Civic Employees picnic at CRYSTAL BEACH, were busy tonight clearing  
the streets of trees, broken branches and other storm debris.

Trouble crews of the HAMILTON HYDRO ELECTRIC COMMISSION were  
still hard at work tonight attempting to restore power to sections of the  
east end. "Many services are out, although no complete circuits were disrupted,"  
an official reported. It was believed that parts of the east end would have  
to go without light service tonight.

The BELL TELEPHONE CO. escaped serious damage. Trouble men  
repaired some lines where the cables were partly burned by downed hydro  
wires.

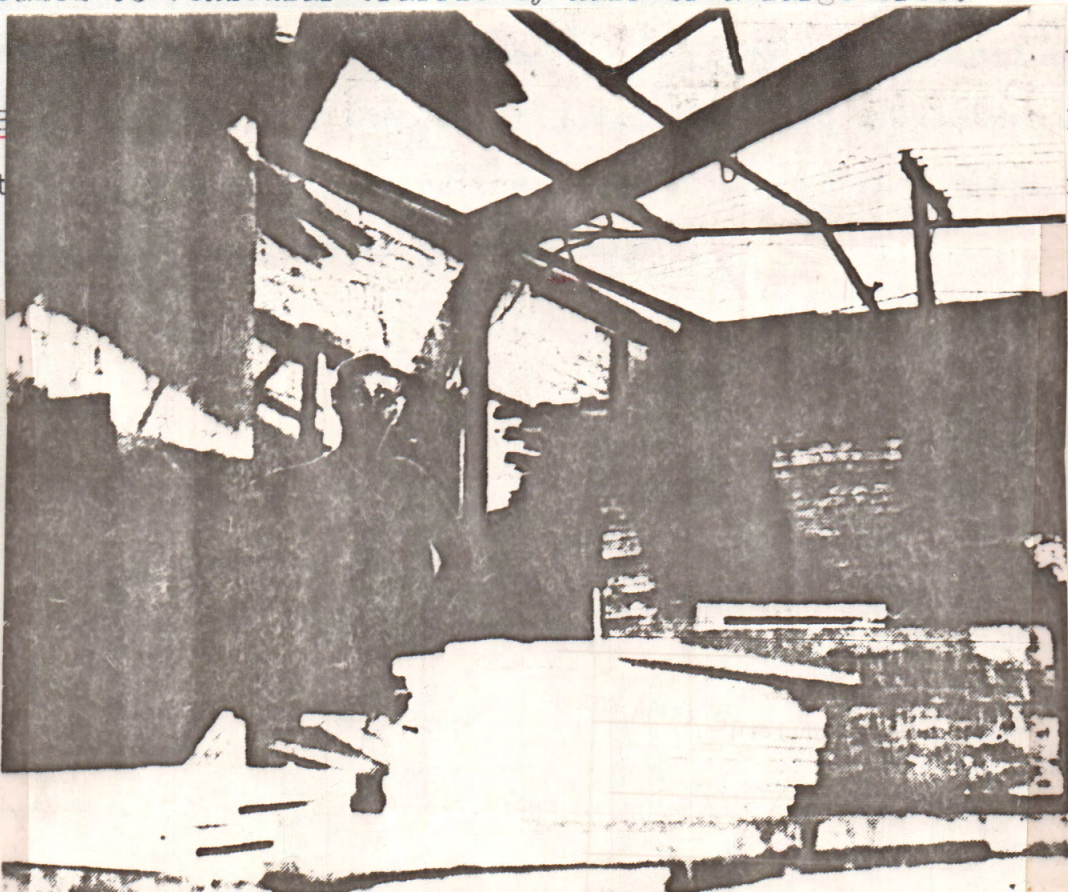
Nine-year-old AUBREY WALL, of JULIAN AVE., narrowly escaped death  
or serious injury when she came in contact with a live hydro wire torn down  
by the storm.

The child was crossing a field near the corner of JULIAN and  
ROXBOROUGH STS. when she fell on the high tension wire. She suffered second-  
degree burns to the left hand. Her condition at HAMILTON GENERAL HOSPITAL  
was good.

One block of <sup>F-9</sup> AUGUSTA ST., between JOHN and CATHERINE STS., was  
still barricaded to vehicular traffic by half of a large tree.

BURLINGTON E  
said tonight  
wind passed

ver  
h police  
rong



**Hamilton Near-Tornado Rips Off Factory Roof**—Causing thousands of dollars  
damage in a few minutes, an electrical storm, accompanied by rain and high winds,  
tore off the roof of the Ontario Box Factory, near the centre of the city yesterday.  
Fred Setzkorn, foreman, viewing the ruins, escaped with scratches as he dived to safety  
under the machine he was operating.