

0698339



FO

TORNADO PROJECT SUMMARY SHEET

1. DATE AND TIME *May 2, 1983 1530 EDT*

2. LOCATION OR PATH (attach map)
Rexdale, Ont.
(Carrier Dr. & Humber College Blvd to Weston Rd. & Valeria Blvd)

3. PATH LENGTH NOT KNOWN <1mi; 1-4mi; 5-10mi; 11-50mi; LENGTH IF >50mi

4. PATH WIDTH 5. TORNADO PART OF SQUALL LINE? YES; NO; UNKNOWN:

6. ANY UNUSUAL COLORATION? YES; NO; UNKNOWN

7. ANY UNUSUAL SOUND? YES; NO; UNKNOWN

8. IF ANSWER TO 6 OR 7 YES, ELABORATE;

9. LIST ANY ASSOCIATED PHENOMENA
(Such as hail, vivid lightning heavy rain, no rain, etc.)

10. TOTAL DAMAGE ESTIMATE \$ 11. TOTAL DEATHS

12. TOTAL INJURED 13. TOTAL HOMELESS

14. LIST ALL REFERENCES

15. SUMMARIZE REMARKS PERTAINING TO (a) FUNNEL; (b) INTERESTING OR CAPRICIOUS EVENTS.

*T.D. 17 611900
4843450*

*L.O. 17 616400
4852300*

0698307

✓ FO 1

TORNADO PROJECT SUMMARY SHEET

1. DATE AND TIME *May 2, 1983 1530 EDT*

2. LOCATION OR PATH
(attach map) *Rexdale, Ont.*
(Belfield Rd. to Finch & Islington)

3. PATH LENGTH NOT KNOWN <1mi; 1-4mi; 5-10mi; 11-50mi; LENGTH IF >50mi
23km

4. PATH WIDTH 5. TORNADO PART OF SQUALL LINE? YES; NO; UNKNOWN:

6. ANY UNUSUAL COLORATION? YES; NO; UNKNOWN

7. ANY UNUSUAL SOUND? YES; NO; UNKNOWN

8. IF ANSWER TO 6 OR 7 YES, ELABORATE;

9. LIST ANY ASSOCIATED PHENOMENA
(Such as hail, vivid lightning heavy rain, no rain, etc.)

10. TOTAL DAMAGE ESTIMATE \$ 11. TOTAL DEATHS

12. TOTAL INJURED 13. TOTAL HOMELESS

14. LIST ALL REFERENCES

15. SUMMARIZE REMARKS PERTAINING TO (a) FUNNEL; (b) INTERESTING OR CAPRICIOUS EVENTS.
- perhaps 3 separate vortexes

*TD 17 613500
4839000*

*L.O. 615250
4844680*

0698338



F0

TORNADO PROJECT SUMMARY SHEET

1. DATE AND TIME *May 2, 1983 1530 EDT*

2. LOCATION OR PATH (attach map)
Roxdale, Ont.
(Martin Grove & Finch to Weston Rd. & Hwy 7)

3. PATH LENGTH NOT KNOWN <1mi; 1-4mi; 5-10mi; 11-50mi; LENGTH IF >50mi

4. PATH WIDTH 5. TORNADO PART OF SQUALL LINE? YES; NO; UNKNOWN:

6. ANY UNUSUAL COLORATION? YES; NO; UNKNOWN

7. ANY UNUSUAL SOUND? YES; NO; UNKNOWN

8. IF ANSWER TO 6 OR 7 YES, ELABORATE;

9. LIST ANY ASSOCIATED PHENOMENA
(Such as hail, vivid lightning heavy rain, no rain, etc.)

10. TOTAL DAMAGE ESTIMATE \$ 11. TOTAL DEATHS

12. TOTAL INJURED 13. TOTAL HOMELESS

14. LIST ALL REFERENCES

15. SUMMARIZE REMARKS PERTAINING TO (a) FUNNEL; (b) INTERESTING OR CAPRICIOUS EVENTS.

*T.D. 17 613500
4844500
L.O. 17 616250
4849250*

The REXDALE, Ontario TORNADO of May 2, 1983

Investigation dates May 2-3-4, 1983
Investigation, photographs and report by Steven Leitch
Downsview office telephone: 667-4662

INTRODUCTION:

On the afternoon of May 2, 1983 a waterspout was reported sighted over Lake Ontario off shore at Clarkson. Minutes later at about 3:23 pm EDT (19:23 GMT) one or more F0 tornado vortexes touched down in the west end of Metropolitan Toronto in Rexdale. The vortexes tracked NE across the NW corner of North York and into Vaughan township a total path length of 23 kms. To the best of my knowledge there were no injuries or fatalities.

SEQUENCE OF EVENTS:

The waterspout seems to have inflicted no damage in the Clarkson or Mississauga areas. The most southwestern extent of the first tornado was damaged roofs at Hwy 27 and Belfield Rd. The next piece of damage was on Kipling Ave. south of Albion Rd. then, finally, trees near Finch and Islington Avenues. A possible 2nd tornado track starts in the Finch Av. and Martin Grove Rd. area; moves NE damaging trees and house roofs in the Islington and Steeles Av. area at 3:25 pm EDT. Then it damaged two factories under construction N of steeles Av. and E of Pine Valley Dr. in Vaughan township. The tornado then took out 10 power poles on Weston Rd. south of Hwy 7. A possible 3rd tornado track starts with damage to a factory roof reported near Humber College Blvd. and Carrier Dr. W of Hwy 27. This tracked NE bending antennas and knocking down telephone lines E of Pine Valley Dr. on Hwy 7 and finally knocked over a trailer and lifted part of a roof on Weston Rd. 5 kms. N of the Metropolitan Toronto limits.



Location 1 - KRUGER PAPER CO. Factory roof collapsed



Location 1 - steel sheet wrapped around truck trailer leg

DAMAGE LOCATIONS: (refer to the fold out map at the back of this report for numbered locations)

Vortex #1

- 1) The KRUGER PAPER CO. on the N side of Belfield Rd. W of Hwy 27. Employees of the factory said that at the time of the storm white plastic bubble skylights started to explode like the sound of gunshots. Then the roof started to move and 100 m² collapsed letting in 7 cms. of water on the floor. (see photo taken that same evening) Behind the factory the east side truck parking lot was littered with bits of shredded fiber roofing board, broken boards and twisted steel edges used for capping the roof at the walls. One piece of galvanized steel sheet impacted the SW side of a truck trailer leg. The sheet was folded and formed to the shape of the foot of this leg. (see photo)

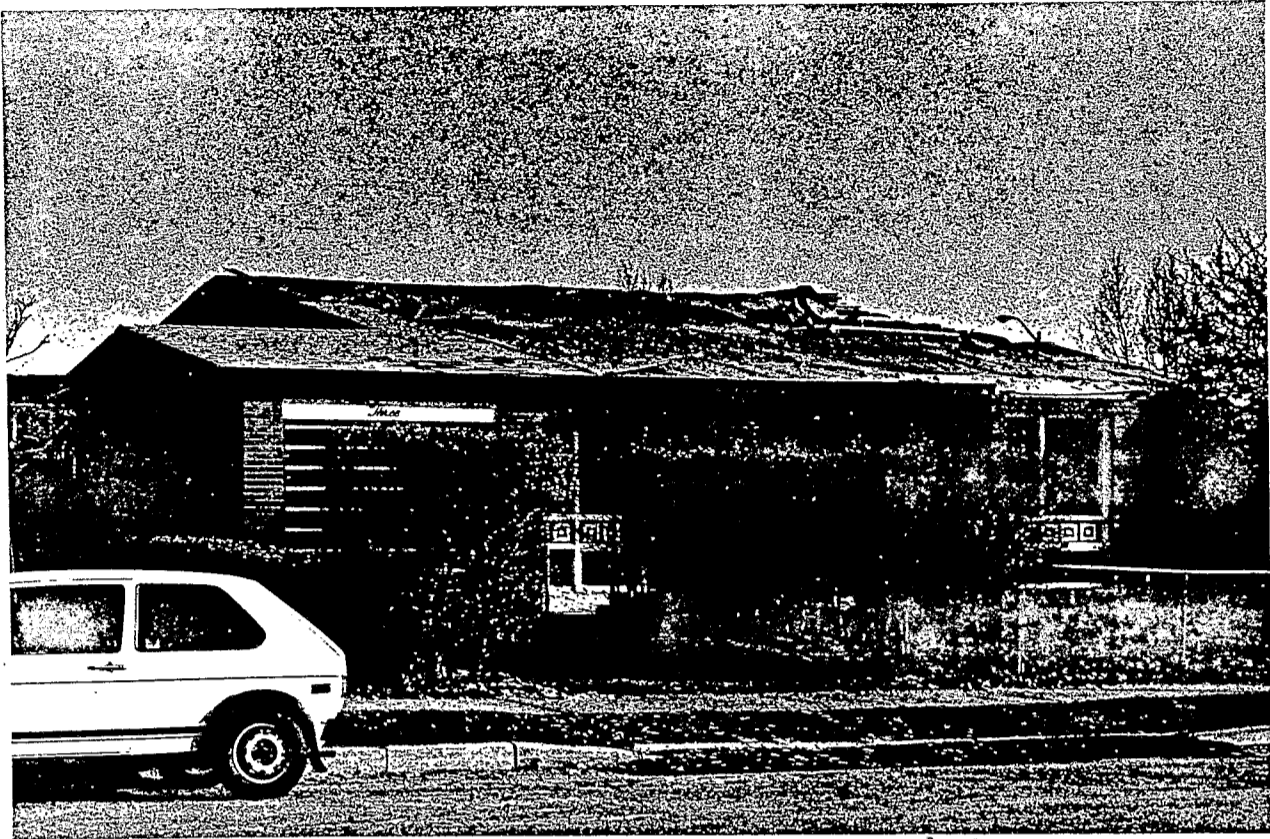
UNITED TIRE, located 150 m E of KRUGER, had the SW corner of it's factory roof damaged and skylights were popped out by the storm.

- 2) Part of a side yard steel sheet fence was knocked over to the NE.
- 3) Rowntree Mill Park. A couple of trees were uprooted to a direction of 030° magnetic. On the windward side of these trees some small twigs were snapped and a couple of branches had been broken off and had landed 10 m. to the NNE.

Vortex #2

- 4) Near the corner of Martin Grove Rd. and Finch Av. the damage started with the removal of shingles from the lower SW corner of some townhouse roofs. One longer townhouse may have had more extensive removal of shingles because a plastic tarpauline was covering about 20 m. of the peak.
- 5) Opal Court. At #3 Opal Court 1/3 of the north facing half of a low slope roof had been lifted off the house and was blown NE across the street striking two other houses. (see photo on following page) Global television shot some TV pictures of this damage shortly after it occurred. The house struck by the roof at #9 Opal Court had the NW corner of it's roof damaged by the impact and the SW corner of #11 Opal Court was likewise impacted, but had the chimney above the roof knocked off where upon it rolled down the roof causing more damage. In this residential area trees had been uprooted and TV towers and antennas were bent NE or knocked over.

Witnesses said they saw the roof come off and there was a whistling sound inside the house. Mothball size hail fell during the storm. A woman living at #5 Opal Court said that #3 had lost it's roof almost 3 years before during the month of June.



Location 5 - #3 Opal Court lost part of it's roof

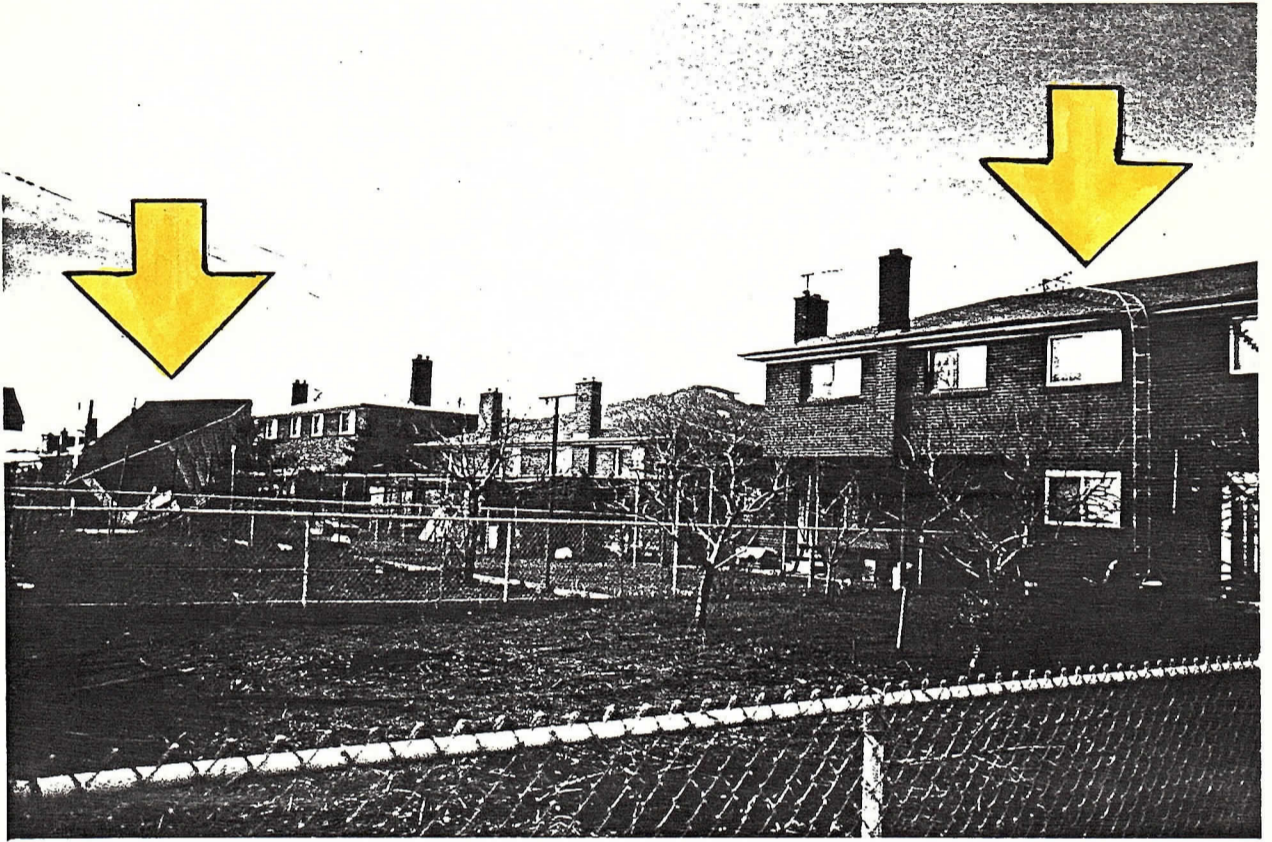


-hugh wesley, sun

Damage is set at \$500,000 at this building, under construction on Hanlan Rd. in York Region. Frank Caprara surveys the damage.

Location 12 - Hanlan Road factory collapsed

- 7) A TV tower was folded to 024° magnetic over a house roof and a garden shed was flipped over to the NE.
(see photo below)



Location 7 - near Islington and Steeles Avenues
Garden shed flipped over - TV tower folded

- 8) Roofing was removed from the S side of a house at #5 Brazil Gate and a TV tower was folded NE over a house at #1.
- 9) Numerous TV antennas and towers were bent over towards NE.
- 10) A 2 m high sign on metal posts was flattened to the E.
- 11) A west facing factory wall, under construction and properly braced, had most of the block and brick knocked over collapsing scaffolding on the east side of the wall.
- 12) On Hanlan Rd. another factory under construction was badly damaged when it collapsed wrecking walls and the half completed roof.
(see photo on opposite page)



-Hugh Wesley, Sun

After a pole snapped on Weston Rd. near Hwy. 7, Consumers' Gas men mark gas lines so they aren't hit when a new pole goes in.

Location 13 - Weston Rd. south of Hwy #7
10 wooden hydro poles downed



Location 18 - MINIWARE HOUSING CO.
one empty trailer is overturned

- 13) 10 wooden power poles were bent east or broken off. (see Toronto Sun photo on opposite page) An eyewitness working at the GM dealership on the NW corner said there was walnut size hail, the clouds were green coloured to the W, the power went off at 3:25 pm EDT and visibility dropped to 10 m. in wind whipped rain.

Vortex #3

- 14) I heard about fiberboard roofing material torn off a factory in the Carrier Drive and Humber College Blvd. area. I did not find it's exact location.
- 15) East of Martin Grove Rd. in the Mount Olive Drive area there were a few TV antennas bent NE.
- 16) 250 m. of wooden telephone poles were broken off or leaning N.
- 17) About 2.5 km. north of the Toronto Met. Research Farm near Weston Rd. and Hwy 7 some branches and a tree had been knocked E onto Weston Rd. A silo roof, also had been knocked half off.
- 18) MINIWARE HOUSING CO. One of the sections of 4 m² flat steel roof on the SW corner had been lifted off. One empty trailer, among 100 others, was knocked over to the east. (see photo on opposite page)

CONCLUSION:

It is difficult to really assess what happened in the case of this section of the storm. I've divided it into three separate vortexes based upon the skimpy pattern of damage. The "jet plane roar" and eyewitness accounts seem to confirm that there was at least one tornado. These vortexes would be classed as F0 type tornadoes with a total approximated path length of 23 kms. Path width is very difficult to estimate, but probably is less than 50 m on average, but would appear to be approximately 200 m. wide in the Steeles and Islington Avenues area and the same at Weston Rd. and Hwy 7.

There was other tornado activity, at this time on this day, in southern Ontario. Another tornado touched down in King township about 16 km. NNW of the end of vortex #3.

(see the report called The KETTLEBY, Ontario TORNADO)
May 2, 1983

13 people hurt near Sarnia in tornado

THE GLOBE AND MAIL, TUESDAY, MAY 3, 1983 5

ONTARIO

A severe thunderstorm, accompanied by small tornados, swept across Southern Ontario yesterday afternoon, injuring at least 13 people and leaving about 50 homeless near Sarnia.

In Etobicoke, eight workers narrowly escaped injury when the roof of a factory collapsed.

At Reeces Corners, a village 30 kilometres east of Sarnia, a tornado damaged hundreds of buildings, said Corporal Syl Cashabeck of the Ontario Provincial Police. He estimated the storm caused "many millions of dollars damage."

About 50 people were left without homes, but they were able to find accommodation with relatives or friends, Cpl. Cashabeck said. "In rural communities, people are very friendly."

A small tornado may have touched down in the Etobicoke industrial park where the eight workers ran to safety at Kruger Inc. after they heard a thunder-like rumbling.

"I heard the rumble and then the roof started to shake and lift and then people started yelling and running," said Graham Evely, a supervisor at Kruger.

Damage could be in the hundreds of thousands of dollars at the Kruger plant. Nearby factories were also damaged.

The workers at Kruger were running machines that make paper boxes. A section of corrugated steel roofing about 50 feet square toppled on to the machines.

"It is a miracle that no one was killed," said Robert Larabee, a shift foreman. "There was a lot of thunder, then a big bang and then everybody just cleared out."

Mr. Larabee said that just two minutes before the roof caved in, he was seated at his desk where much of the rubble fell.

One worker who has poor eyesight was led by hand from the area by another worker when the roof started to cave in.

A line of thunderstorms accompanied by small tornados moved eastward through the Metro Toronto, Niagara, Durham, Victoria and Haliburton regions knocking hydro lines down, swelling watercourses and toppling structures.

In Chautauqua County in Western New York State, two women were killed and many homes were damaged as a tornado swept through.

One woman died when a house collapsed and another when a vehicle was flipped over by high winds, Sheriff's Deputy Roy Hunt said.

"Out at Chautauqua Shores (a settlement on Chautauqua Lake), I don't think there's a house that hasn't got the roof gone or been partially torn apart," Mr. Hunt said.

Gordon Gee, chief meteorologist for Environment Canada's Ontario region, said radar can indicate where storms are, but cannot predict precisely where a tornado will hit.

"A tornado can touch down for one second, two seconds or two hours . . . and there's no way of saying which ones of several hundred severe thunderstorms that will be."

In Woodstock, where a tornado devastated part of the city 3½ years ago, a Provincial Court judge was taking no chances.

As the storm raged outside and the courtroom lights flickered on and off, Judge Robert Groom adjourned the session because of the eather.

"I don't want a hurricane to come and you be here," he said in excusing 14 accused. He ordered them to return today "at 2 and I hope the building is here."

Don Carmichael, a spokesman for Ontario Hydro in London, Ont., said the tornado levelled five steel towers and seven wooden poles on the transmission line between Sarnia and London, leaving thousands of Southwestern Ontario customers without electricity.

Sergeant William Roberts of London Police said there were torrential rains, violent winds, flooding and "hailstones about half-an-inch in diameter."

He said that after the tornado touched down in the Sarnia area, the police switchboard "lit up" with calls from London residents fearing it was heading their way.

"It was just one hell of a good thunderstorm," Sgt. Roberts said.

—Staff-CP

Metro Weather
Showers tomorrow,
high 14C.
Details, A2

THE TORONTO

Estab

AFTERNOON

ONTARIO STAR

Tuesday

May 3, 1983

25 CENTS

April Monday-Friday
paid circulation 508,158

Published 1892

MOON EDITION

11 hurt in twisters' deadly trail

Two tornadoes and accompanying storms ripped through southwestern Ontario yesterday, destroying barns, homes and businesses. Nobody in Ontario was killed, but the storm caused six deaths in Ohio and western New York state.

Eleven people were sent to hospital in the area near Sarnia and Petrolia, five of them from the village of Reece's Corners, just north of Petrolia. Spokesmen for three area hospitals where the injured were treated said there were "serious but not critical injuries."

House collapsed

Two people were killed when a tornado swept through Chautauqua County, west of Buffalo, N.Y., yesterday afternoon, damaging many homes. Police said one person was killed when a house collapsed and the other died after a vehicle was flipped over by the high winds.

One tornado cut a 16-kilometre (10-mile) swath through Lambton County before heading toward London. Ontario Provincial Police said they had been warned of heavy rains, but hadn't heard any tornado warning.

Metro got off fairly lightly. In the most seri-

ous incident here winds caved in the roof of a Rexdale plant yesterday afternoon.

Kruger Inc., a sprawling paper products manufacturing firm on Belfield Rd., in the Highway 27-Dixon Rd. area, suffered damage estimated at upwards of \$500,000.

'Get down'

The main twister touched down first on Walpole Island Indian Reserve on the northeast shore of Lake St. Clair, where it took the steeple off St. John's Anglican church and demolished a partially built senior citizens' home.

It then lifted and headed north, touching down again in Reece's Corners, a village of about 100 people.

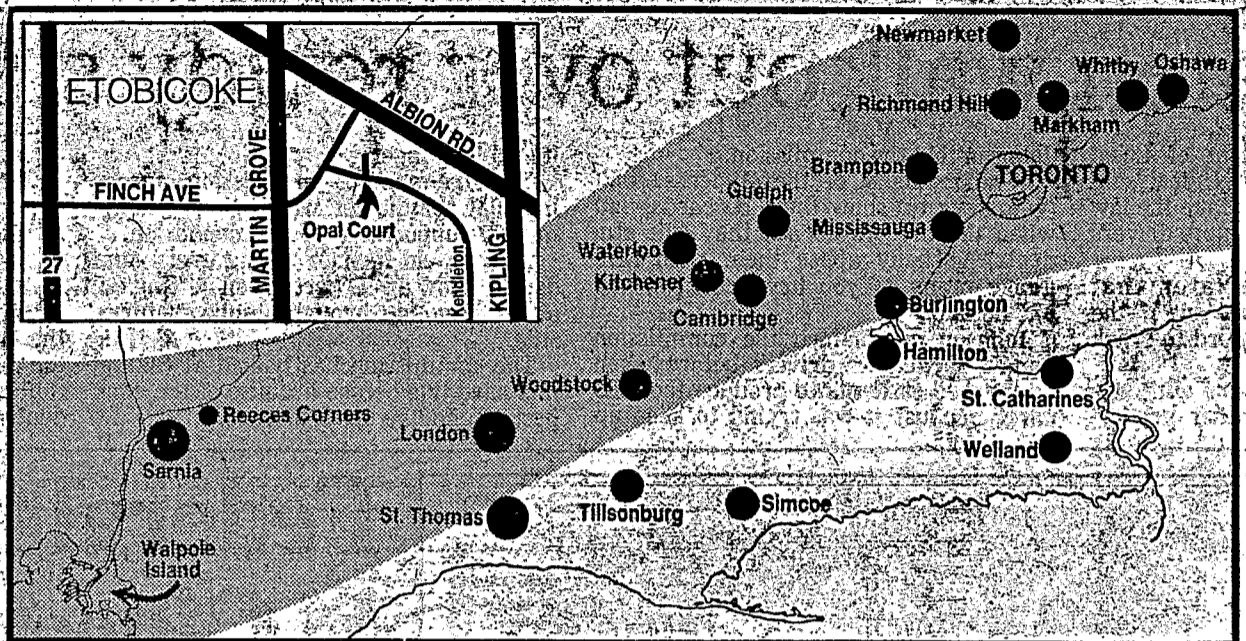
Paul Fleischer was serving customers in his Ranch House Restaurant when the twister hit.

"A customer was walking out the door and he saw his tractor with a trailer picked up and

See STORMS/page A4

More pictures, stories/A7

Quake hits California/A3



Storm path: Map shows the path two tornadoes and accompanying storms took as they ripped through southwestern Ontario yesterday, destroying buildings and sending 11 people to hospital. Metro got off fairly lightly, the hardest hit area being Rexdale (inset), where the roof of a plant caved in.

Storms rip through southern Ontario

Continued from page A1

hurled across Highway 7. He yelled at everybody to get down," Fleischer said.

"All of a sudden there was a lot of clatter and then a big mist tore through the place. There was a lot of water and glass flying."

Brian and Gail Sullivan saw the twister coming from the second floor of their motorcycle shop in the village. They just managed to reach the ground floor before the wind ripped the front off the building. They escaped unhurt.

John Vanderweilen was on the phone in his home listening to a storm warning when it hit.

"I just started into the basement when the winds hit. It only took a minute or so, but everything's wrecked. All the furniture, it's wrecked," he said.

On Sunday, Nick Franz placed 10,000 turkey pullets in his barn. It was destroyed, along with his house, yesterday. He says the young turkeys that survived the tornado will die from the cold.

His neighbor, Bob Dobbin, runs one of the largest beef farms in Lambton County. His barn and house were destroyed, some of his cattle were killed and others scattered for miles around.

Farmer Dave Core's rented house trailer was picked up and smashed to pieces. "The amazing thing is that there was a man in the trailer and he went with it, but somehow just got up and walked away when he came back down. He went to hospital for some cuts and bruises."

Core said he saw the tornado coming and fled to the basement with his family. "It only came within 1,000 feet (305 metres) of our place, but I could see it was carrying barns along with it."

A second tornado touched down just west of the village of Merlin in Kent County about the same time as the first, blasted Reece's Corners.

One of the tornadoes took out five hydro towers and seven poles as it swirled towards London, leaving thousands of southwestern Ontario customers without elec-

tricity. Some farm areas were expected to be without power overnight.

Ship crews on the St. Clair River reported some boathouses and remains of others adrift in the river, but no ship requested assistance, according to the Sarnia traffic control office of the Canadian Coast Guard.

In Guelph, the high winds caused several hundred thousand dollars in damage when airplanes were flipped over and some hangars were flattened.

By GUS CARLSON
Staff Writer

Metro rocked by big blow

The storm that ripped through Metro yesterday included a small tornado that took the roof off an Etobicoke paper factory and severely damaged several other west-end buildings.

Despite the heavy damage, there were no deaths or serious injuries.

The tornado hit between 3:30 and 4 p.m. knocking down hydro wires and disrupting traffic.

The storm — the tail end of a killer-storm that swept through the U.S. Midwest into New York and Ontario — had winds of 44 km/h to 100 km/h.

Hardest hit area in Ontario was the tiny hamlet of Reeces Corners, near Sarnia, whose 100 residents ran for cover before a tornado struck, causing \$5 million damage.

In Etobicoke, the roof of the Kruger Ltd. paper factory on Belfield Rd. was ripped open by the wind and torrential rains spoiled thousands of dollars worth of corrugated board paper rolls in the factory.

Total damage is estimated at \$500,000.

The 80 warehouse workers scrambled quickly for the exits after "two big bangs" thundered from the roof, said foreman Bill Larbee.

"Then the roof lifted and it came down," he said.

Much of the overhanging warehousing machinery was also damaged and it's not known when the plant will reopen.

In the neighboring United Tire and Rubber Co. plant, dozens of skylights "blew like firecrackers" when the storm struck.

The exploding lights scattered glass and debris both inside and outside the Belfield Rd. factory. Some car windows were smashed by flying debris.

"I was walking through the warehouse and one after another, the skylights blew like firecrackers," said Oscar Moniz, warehouse manager. "I've never seen anything like this. It's quite a mess. Debris was everywhere and our roof buckled in a few places."

No one was hurt. Moniz estimated damage at \$15,000.

High winds also ripped tar and gravel from the roof of the Silverstone Plaza in Etobicoke. No one was hurt.

Two factories under construction in York Region were levelled by the high winds, causing \$700,000 damage.

Winds felled a quarter-mile stretch of 20 hydro poles on Weston Rd. south of Hwy. 7, knocking out hydro to about 500 homes.

Heavy winds tore a section of roof from a Scarborough home, dropping bricks onto the sidewalk and street.

Police said the only damage was to a car, parked in front of the house on Kingston Rd. at Midland Ave.

Brampton got smacked with a rain and hail storm that turned day into night for a few terrifying minutes, residents said.

"It was as if there were a sea of clouds funnelling and gushing down the main street," said businessman Keith Harris.

No one was injured but power was out for 20 minutes in Bramalea. Peel Regional Police reported motorists had to pull off streets and highways.

Debbie Albrecht was at her Truman St. home when a hailstorm began.

"The wind was really strong and then the sky turned green," she said. "When it really hit, you couldn't see across the street."

Police and Brampton fire department officials reported damage was light, despite the storm's intensity.

Most other areas around Toronto also escaped serious damage, police said.

Police in York and Durham regions said traffic was snarled in those areas and hydro lines were down in Newmarket but there were no injuries.

The same storm ripped through the Cambridge area, damaging roofs, uprooting trees and scattering hydro and telephone lines.

The storm whipped through Hespeler and followed Hwy. 401 until it finally blew across Puslinch Lake.

A truck in a shopping mall adjacent to the Cambridge Holiday Inn was tossed like a toy onto its side and several cars were overturned.

At the same time, Kitchener, Waterloo and Bridgeport were deluged with a torrent of rain and hail.

Damage estimated at \$25M

Ottawa may help communities hit by the tornadoes and violent rainstorms that caused an estimated \$25 million damage in southern Ontario — and \$2 million in Metro.

Meanwhile, massive cleanup operations began yesterday across southern Ontario in the wake of Monday's tornado.

In the Metro area, hydro crews were busy reconnecting downed wires and poles and insurance surveyors inspected extensive structural damage to factories and homes.

At least 13 people across the province were injured in the blow but no one was killed.

Government House Leader Yvon Pinard said yesterday the government usually makes a contribution when a natural disaster causes damage over a pre-determined level.

Metro Police issued a warning for people to beware of flooding and fast-running rivers swollen by the heavy rains during the storm. Parents were reminded to keep their children away from these areas.

Although no firm figure has been set for damage in Metro, conservative estimates pin it at more than \$2 million.

In Etobicoke, a small tornado lifted the roof off Kruger Ltd. paper factory on Belfield Rd., causing \$500,000 damage.

At the nearby United Tire and Rubber Co. plant, lights and windows were blown out.

The wind caused about \$700,000 damage when two York Region factories under construction on Hanlan Rd. were blown down.

Peel Regional Police reported about 20 hydro poles down in Brampton's west end. York Regional Police said several

trees were uprooted and telephone poles were knocked over.

Near Sarnia, one man was in hospital with serious injuries and scores were homeless yesterday after the tornado cut a swath through farms around the hamlet of Reeces Corners.

Lawrence Codere, 30, was listed in fair condition with head injuries. He was painting a truck when the storm hit and the vehicle rolled over on him.

OPP said 11 other people were treated in hospital for abrasions and shock.

Colin Nielson was in his mobile home when the tornado picked up the trailer and tossed it into a nearby orchard.

He escaped the wreckage and crawled across a field to a neighboring farm. Luckily, he suffered only cuts.

Dorothy Walker was in her car when a building fell on it. She was unhurt.

Her husband, William, watched as an 18-wheel truck in front of him was blown end-over-end into a ditch.

The worst tornado to hit southwestern Ontario killed 17 people in the Windsor area in 1948.

Meanwhile, Ontario Energy Minister Robert Welch said Housing Minister Claude Bennett and Resources Secretary Lorne Henderson are touring the Sarnia area.

Welch said while it is too early to make a firm estimate of damage, "I feel quite satisfied that once we have a complete understanding as to the extent of the damage, this government . . . will respond in a very humane and responsible way."

Under a federal-provincial agreement, the province must first handle requests for assistance from a stricken area. If more money is needed, Ottawa makes a contribution on a per capita basis.

The REXDALE, Ontario TORNADO

May 2, 1983

These negatives of the damage are available and on file with Steven Leitch.

Telephone: BUS 667-4662 Home 661-7011

