

A

TORNADO PROJECT SUMMARY SHEET

F=2

ONT

1. DATE AND TIME AUG 8, 1977 1300 EST

2. LOCATION OR PATH (attach map) VENNY BEAMSVILLE 0697714

3. PATH LENGTH NOT KNOWN <1mi; 1-4mi; 5-10mi; 11-50mi; LENGTH IF >50mi

4. PATH WIDTH 300 ft 5. TORNADO PART OF SQUALL LINE? YES; NO; UNKNOWN:

6. ANY UNUSUAL COLORATION? YES; NO; UNKNOWN

7. ANY UNUSUAL SOUND? YES; NO; UNKNOWN

8. IF ANSWER TO 6 OR 7 YES, ELABORATE;

9. LIST ANY ASSOCIATED PHENOMENA (Such as hail, vivid lightning heavy rain, no rain, etc.)

10. TOTAL DAMAGE ESTIMATE \$1 MILLION 11. TOTAL DEATHS NONE (5500 chicks)

12. TOTAL INJURED 2 13. TOTAL HOMELESS 5 FAMILIES

14. LIST ALL REFERENCES
THE SPECTATOR, HAMILTON, AUG 9, 10 1977
NIAGARA FALLS REVIEW AUG 10, 1977
ST CATHERINES STANDARD AUG 9, 1977 MARCH 30, APR 1, AUG 5, 1978
LINCOLN POST EXPRESS AUG 10, 1977
FIELD INVESTIGATION AND INTERVIEWS BY M. J Newark + P. J. Elms
AUG 9, 1977

15. SUMMARIZE REMARKS PERTAINING TO (a) FUNNEL; (b) INTERESTING OR CAPRICIOUS EVENTS.

(a) Funnel clearly seen by many eyewitnesses, in one case it was described as a heavy grey colour, vertical, with wide top and a narrow tip about 10 m wide which was touching the ground. Ken Staley saw two funnels. The secondary funnel was about 450 m north of the main funnel and was observed lifting up and down. Evidence of its path was found along about a 1/4 mile track of broken and uprooted trees.

WORKSHEET

IDTO 0697714

① ORIGIN x 17618800
 y 4774950

C30
 ⑤ Standard Error S_x

② LIFT-OFF x_1 17630000
 y_1 4775500

C500
 ⑥ Standard Error S_y

③ $(x_1 - x) = 11200$

④ $(y_1 - y) = 550$

⑦ DAMAGE LENGTH

$$L = [(x_1 - x)^2 + (y_1 - y)^2]^{1/2}$$

③ + ④ $\rightarrow r, \theta = 11213$

⑧ $\alpha = \tan^{-1} \frac{|y_1 - y|}{|x_1 - x|}$
 $\alpha \leftrightarrow \gamma = 3^\circ$

⑨ Standard Error $S_L = (S_x^2 + S_y^2)^{1/2}$

⑤ + ⑥ $\rightarrow r, \theta = 501 \text{ C}$

⑩ $\beta = \frac{\tan^{-1} S_L}{L}$

⑦ + ⑨ $\rightarrow r, \theta$
 $\alpha \leftrightarrow \gamma = 3^\circ$

NE Quad $\phi = 90 - \alpha$

NW Quad $\phi = 270 + \alpha$

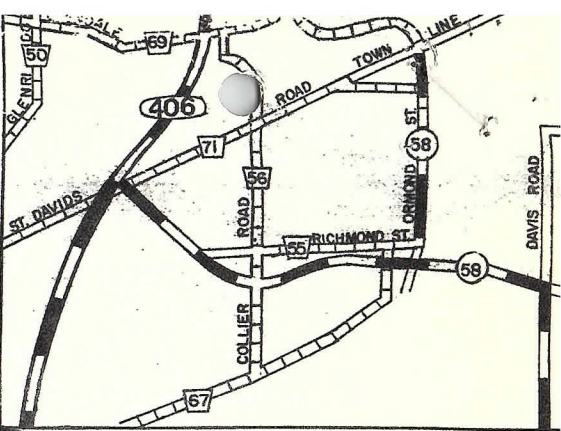
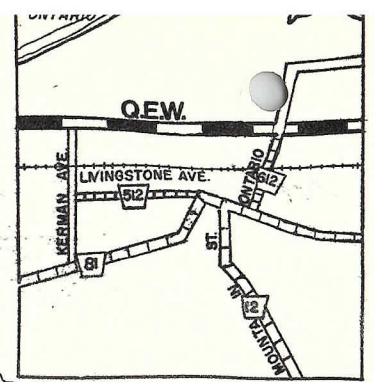
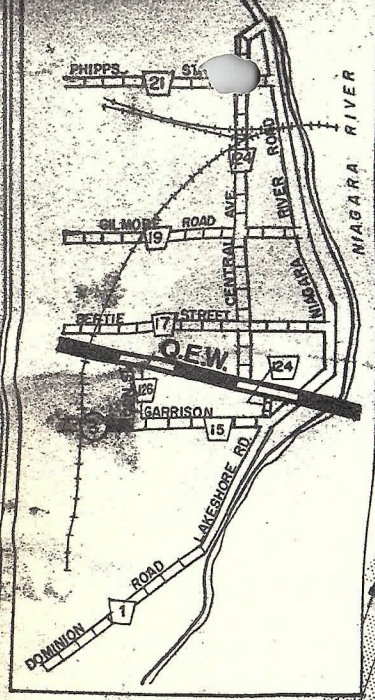
SW Quad $\phi = 270 - \alpha$

SE Quad $\phi = 90 + \alpha$

⑪ $\phi = 267^\circ$

Tornado track
6.5 miles long

Scale,
0 1 2 3
miles



FORT ERIE

SALTFLEET

GRIMSBY

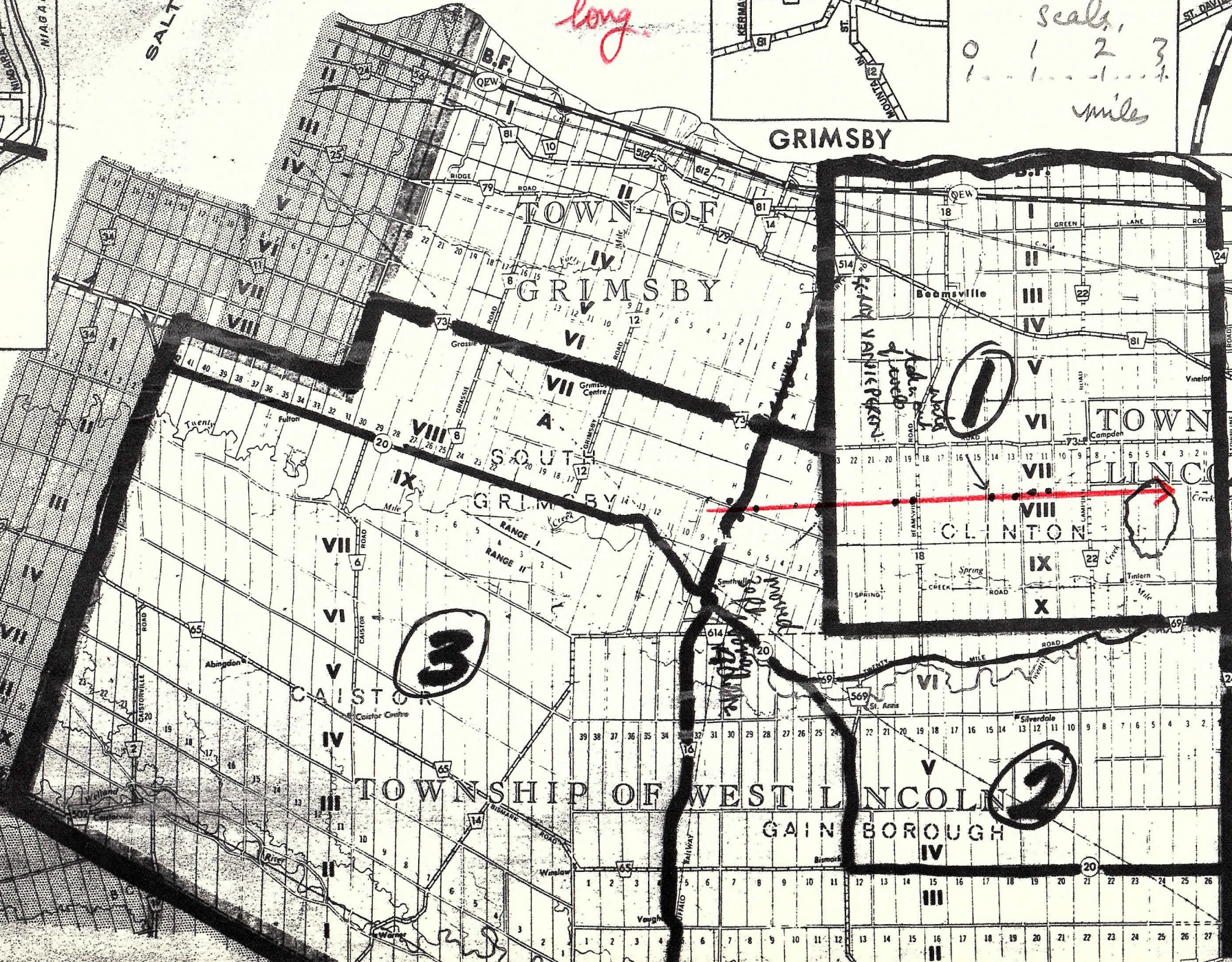
THOROLD

TOWN OF GRIMSBY

TOWN OF LINCOLN

TOWN OF PELHAM

TOWNSHIP OF WEST LINCOLN



3

2

1

VANIE PETERSON

6. (a) Mountain Road (about 1 mi south of Fly Rd)
damage path 300 ft in front of Zuckerman Farm.
Hit at 2:10 pm. 120' x 30' concrete block bldg, roof
lifted off. Hundreds of chickens ^{inc} inside, ^{mostly} uninjured.
Vegetation flattened in south-southeast direction.
Debris carried eastwards onto a small ~~to~~ nearby
house with a 2' x 6" plank piercing it.
Len Staley at home with family when tornado
went over. Saw ^{dark} funnel from front door carrying
away everything in its path, about 18 ft wide
and weaving back and forth.

(b) in bush opposite, trees broken off halfway; uprooted,
Some as big as 2 1/2 - ~~ft~~ in diameter.

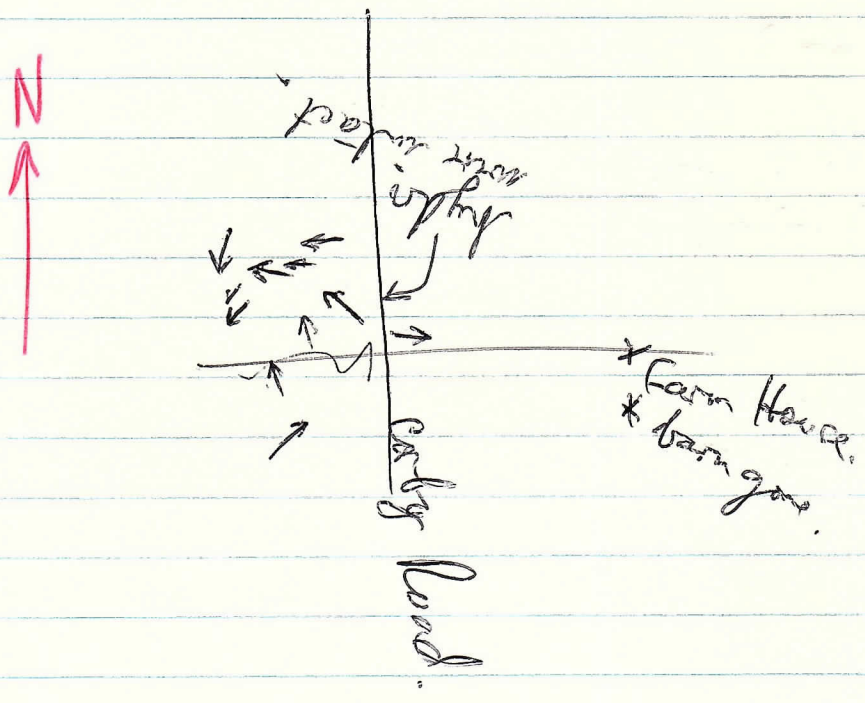
* Smithsby road (previous
occurrence in July Aug 75)

* Out Fed of Agriculture ^{Smithsville -} Township of Lincoln's office
Mr Welsh. 892-2126. (1791 Balfour, Fenwick
Out)

* opp reported corn in field swirled in circular pattern.
a lot of ~~in~~ buildings

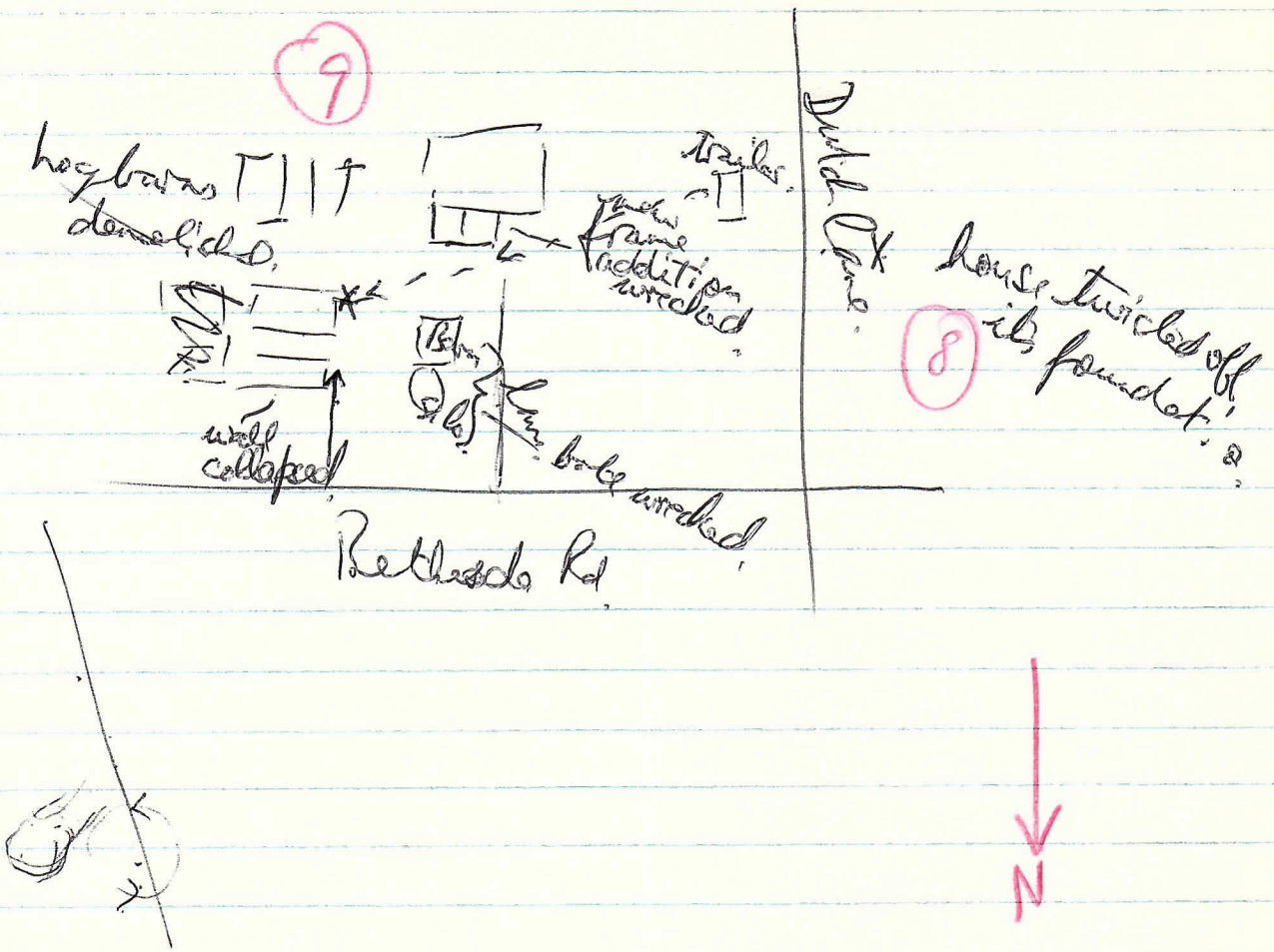
②
⑦

Corby Road.
Farm House badly damaged, barn completely wrecked, occupants injured by flying glass.



③ Dutch frame, (near concession over from Cosby Rd) and corner of Bethesda. Debris strewn through fields 1/2m including angle iron Jackson farm.

⑨ hog farm, four barns demolished as well as bank barn all containing pigs. now killed 65ft house trailer blown 400ft and completely unrecognizable. direction of travel west to east 50 ft concrete silo demolished



Eyewitness report by New Herald Elliot

III

Time about 2:30 pm
not sure.

New Merle Graham
1 AF 358-1409
New Merle Beacom
358-5627

- 20 Valley Golf Course at Vineland.
- Saw debris ^(leaves and branches) circling in the air about 100 or 200 ft.
- funnel passed about ~~100~~ ^{60 yds} away.
- heavy grey color
- funnel ~~vertical~~ appeared vertical, top wide, ~~considerably wider~~ tip narrow (about 30 ft wide)
- afterwards saw ~~at~~ ~~on~~ portion of corn field (about 30 ft wide) flattened.
- didn't hear any noise
- estimated funnel motion about west to east

Eyewitness report by
New Merle Graham.

II

Time about 2 pm. Took refuge in a
maintenance barn.

- noticed unusual circling of ^{15 min} clouds above.
- noticed leaves and twigs
- ~~at~~ funnel a grey color, seen through heavy rain
- shed buffeted by wind, but no sense of danger.
- funnel followed along the river and passed about 100 yds away.
- tip touching the ground and disturbing everything, whirling it up into the air.
- ~~a minute or two since first spotted till it passed, not moving too fast, maybe 15 mph.~~

Woodstock Sentinel

537-2341

morning
John Heckie }
Terry Craig }

YKF

181-152-519

648-2571

Plattsburgh
Washington
mid way between
Woodstock & Killbuck.

Turkey barn destroyed

684-1174

CKTB ~~34~~ ~~34~~
near ~~St~~ Van Alstair
Kevin Hodges

Camden south of Vineland.
Tornado sighted and touched down to the SW,
house off its foundation
trailer thrown 1/4 mile.

sighting at 20 valley golf course (south of Vineland)
Rev Gerald Elliot 684-8844 (St Catherines)
181-152

CB Top 42,000 about 1800Z-1840Z.

1 mi east + 1/2 mile south of Camden.

Dutch + Bethesda Rds.

twister moving towards Camden.

Parson + Jackson Farm.

1 man
injured

Barn completely
wrecked, 24x26 ft
house trailer carried

4 farms scattered
over 3 corn fields
implement shed flattened
large trees 50 yds wide.
car flattened

1/4 mile in the wreckage of the Jackson farm.

The Wall Farm, roof off barn.

Mr Kanap witnessed in the funnel saw it hit

MS
170
ATTN YYZ
WOODSTOCK NEWSPAPER JUST CALLED ASKING FOR INFORMATION ON AN ALLEGED
TORNADO OCCURANCE AT PLATTSVILLE THIS AFTERNOON
YXU LONDON WX OFC 081745

170
ATTN YYZ
FRCSTR
PHONE NUMBER WOODSTOCK SENTINEL 539-1266
CAMBRIDGE NEWSPAPER ALSO CALLED US FOR INFO BUT AGAIN THEY TOLD U
US NO DETAILS
YXU LONDON WX OFC 081842

170
YSN YYZ1
ATTN PUBLIC FCIR HAVE PUBLIC REPORTS OF TORNADO 8FUNNEL CLOUDS AND
DAMAGE IN CAMDEN AREA AND ALSO AT 20 MI GOLF JUST SOUTH OF
VINELAND
YSN NIAGARA DISTRICT W.O.