

UPDATED

Confirmed Tornado
Bayfield - Fordwich, Ontario
September 26, 1970

Date- Local: Monday, September 26th, 1970

UTC: Monday, September 26th, 1970

Time- Local: 1530

UTC: 1930

Location: S of Bayfield to Fordwich

Region: Huron - Perth

Classification: Confirmed Tornado

Category: -999

Casualties: 12002 Animals dead

Track Length: 67540 m

Width: None available

Motion: 235 degrees

Damage Estimate: None available

F-Scale Rating: F2

Code: AH

Damage Survey: None

Spotter Reports: None

Other Documents:

Newspaper articles, one of which provides a thorough description of the event
(Listowel Banner)

SA report outlining damages

Map of Tornado track

Newark summary sheet

Tornado F-Scale Re-Assessment

Brad L. Rousseau

Tornado Data Production Assistant, Environment Canada

January 25th, 2011

Classification: Confirmed Tornado

Date: Monday, September 26th, 1970

Location: S of Bayfield to Fordwich, Huron – Perth Region

Original Assessment: F1

Re-Assessment: F2

F-Code: AH

Explanation of Assessment: Roofs removed from anchored cottages and top 35 ft of farm silo destroyed. Damage ranks in F2 category in Wind Damage Rating table.

4 PHOTOS OF DAMAGE FROM LISTOWEL BANNER.
 FORDWICH
 TORNADO PROJECT SUMMARY SHEET

1. DATE AND TIME 26.9.1970 1430EST.

2. LOCATION OR PATH (attach map) BAYFIELD SOUTH OF BAYFIELD TO FORDWICH 0697012

3. PATH LENGTH ☐ NOT KNOWN ☐ <1mi; ☐ 1-4mi; ☐ 5-10mi; ☒ 11-50mi; ☐ LENGTH IF >50mi

4. PATH WIDTH NOT KNOWN 5. TORNADO PART OF SQUALL LINE? ☒ YES; ☐ NO; ☐ UNKNOWN:

6. ANY UNUSUAL COLORATION? ☐ YES; ☐ NO; ☒ UNKNOWN

7. ANY UNUSUAL SOUND? ☐ YES; ☐ NO; ☒ UNKNOWN

8. IF ANSWER TO 6 OR 7 YES, ELABORATE;

9. LIST ANY ASSOCIATED PHENOMENA (Such as hail, vivid lightning heavy rain, no rain, etc.) HEAVY RAIN

10. TOTAL DAMAGE ESTIMATE \$ UNKNOWN 11. TOTAL DEATHS 2 COWS 12,000 CHICKS

12. TOTAL INJURED NONE 13. TOTAL HOMELESS NONE

14. LIST ALL REFERENCES PALMERSTON OBSERVER 1.10.1970
 BEACON HERALD, STRATFORD 28.9.1970
 BRUSSELS POST 1.10.1970
 CLINTON NEWS-RECORD 1.10.1970
 LISTOWEL BANNER OCT 1ST 1970
 Telephone Interviews, Dec 5, 1980 by M. J. Newark

15. SUMMARIZE REMARKS PERTAINING TO (a) FUNNEL; (b) INTERESTING OR CAPRICIOUS EVENTS.

(b) A SWATH OF DAMAGE FROM LAKE HURON TO FORDWICH. BUILDINGS UNROOFED, TREES UPROOTED AND TWISTED OFF, POWER LINES DOWN, FARM MACHINERY OVERTURNED OR BLOWN ABOUT, ENTIRE CONTENTS OF COTTAGE NEAR BAYFIELD BLOWN OUT TOP 35 FEET OF A SLAB SILO NEAR CLINTON BLOWN DOWN WHILE ROOF OF NEARBY CHICKEN BARN TAKEN OFF AND ABOUT 1000 BABY CHICKS WERE SUCKED OUT AND AWAY. (REMAINDER OF CHICKS DIED FROM BROWNING AND COLD)

NEAR BRUSSELS 3 MEN WORKING IN A GARAGE WHEN THE STEEL DOOR APPEARED TO EXPLODE OUTWARDS. DEBRIS FROM THE GARAGE INCLUDING LARGE CHUNKS OF HEAVY STEEL ROOFING AND SIDING WAS STREAMED ACROSS FIELDS FOR A QUARTER MILE

WORKSHEET

IDT0 0697012

1500 C

① ORIGIN x 17442500
 y 4817600

⑤ Standard Error S_x

② LIFT-OFF x_1 17497800
 y_1 4858000

⑥ Standard Error S_y

③ $(x_1 - x) =$ 55300

④ $(y - y_1) =$ 40400

⑦ DAMAGE LENGTH

$L = [(x_1 - x)^2 + (y - y_1)^2]^{1/2}$ ⑧ $\alpha = \tan^{-1} \frac{|y - y_1|}{|x - x_1|}$

③ + ④ $\rightarrow r, \theta =$ 68485 m

$x \leftrightarrow y = 36^\circ$

⑨ Standard Error $S_L = (S_x^2 + S_y^2)^{1/2}$

⑤ + ⑥ $\rightarrow r, \theta =$ 18.03 m C

⑩ $\beta = \frac{\tan^{-1} S_L}{L}$

⑦ + ⑨ $\rightarrow r, \theta$
 $x \leftrightarrow y = 2^\circ$

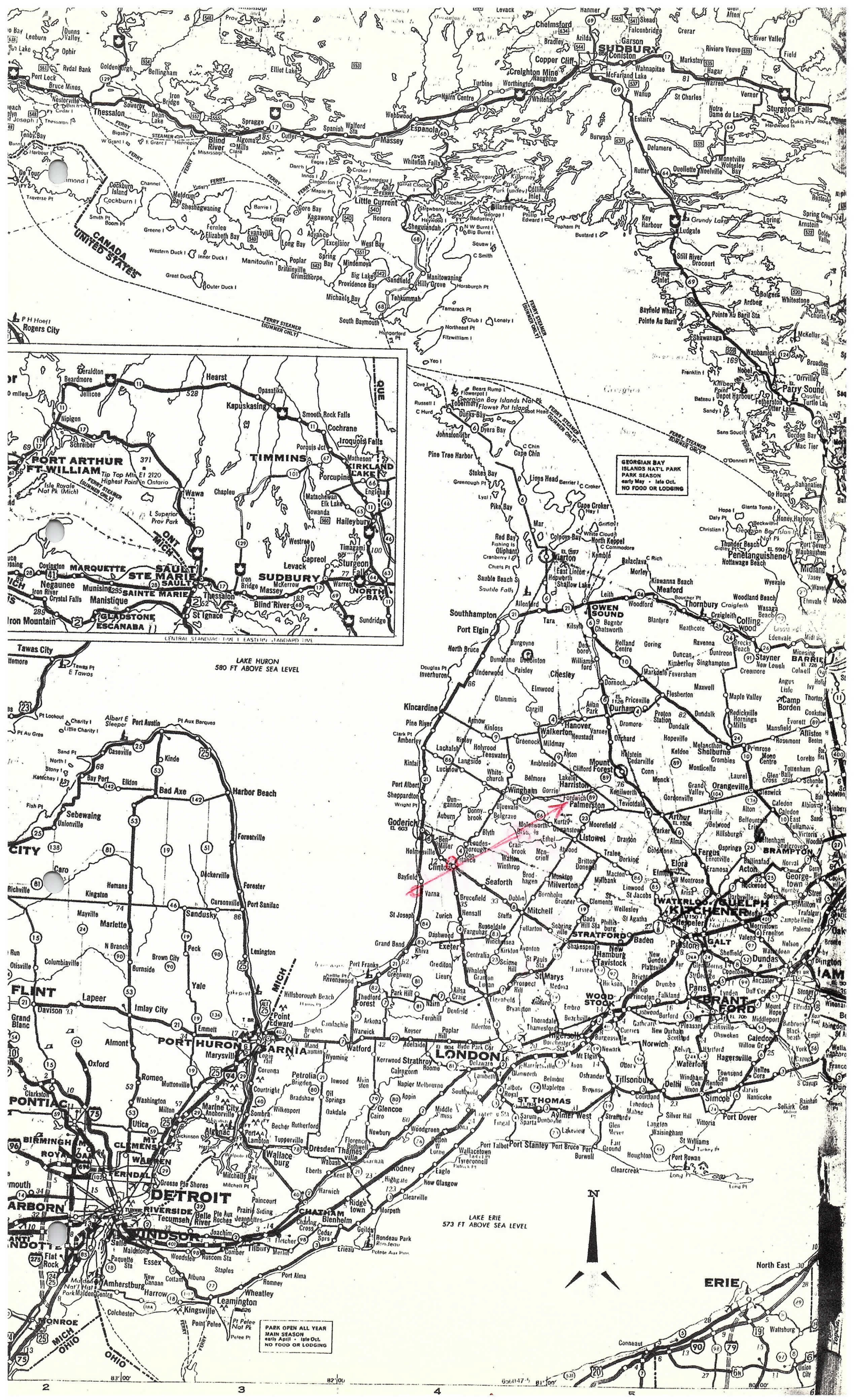
NE quad $\phi = 90 - \alpha$

NW quad $\phi = 270 + \alpha$

SW quad $\phi = 270 - \alpha$

SE quad $\phi = 90 + \alpha$

⑪ $\phi = 234^\circ$



GEORGIAN BAY ISLANDS NAT'L PARK
PARK SEASON
early May - late Oct.
NO FOOD OR LODGING

PARK OPEN ALL YEAR
MAIN SEASON
early April - late Oct.
NO FOOD OR LODGING

SA 57252426580 040 000 10 28 10
REPORTED FUNNEL CLO 10M
WAS NE OFF DUTY OBSERV

Sept 26/70

QG phoned at 1025 pm to report
house trailer destroyed in KS at
Blytheswood (3 miles N Lamington on
highway # 77) = 4.30 pm

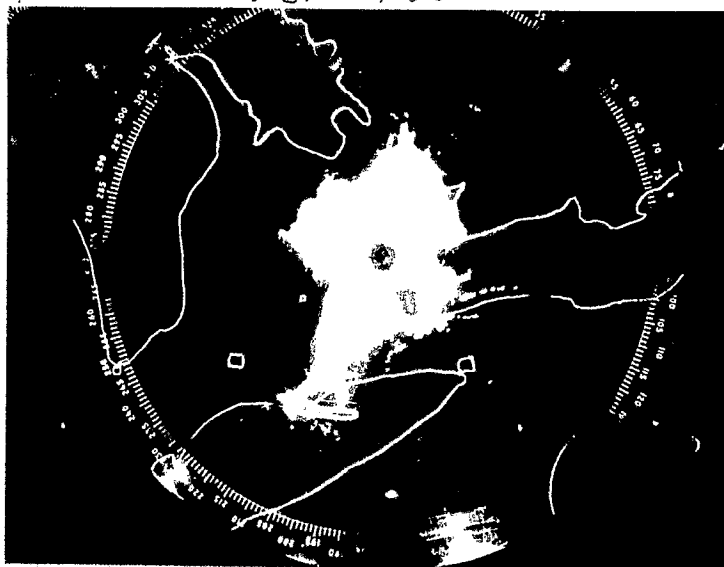
SA 170 262035
GD S 262035 4 023 070 015+ 3614 CF2 SC7AC1 PUBLIC REPORT 0025 ROOFS??? ON
OFF TWO BARNS NEAR CLINTON

JNE

UNE

NA
WY Y2 242043
WEATHER WARNING FOR SEVERE THUNDERSTORMS THIS EVENING IN THE LAKE
Huron Georgian Bay Lake Erie Niagara Falls

SEP 26 1735 EDT



MAX TIS 10000'

SEPT 26 1750 EDT



MAX TIS 35000'

SEPT 26 1830 EDT

