

AUG.

1. DATE AND TIME 16.8.1969 1600 EDT

2. LOCATION OR PATH (attach map) DEEP RIVER 06969-23

3. PATH LENGTH NOT KNOWN <1mi; 1-4mi; 5-10mi; 11-50mi; LENGTH IF >50mi

4. PATH WIDTH 40 FEET D. TORNADO PART OF SMALL LINE? YES; NO; UNKNOWN:

6. ANY UNUSUAL COLORATION? YES; NO; UNKNOWN

7. ANY UNUSUAL SOUNDS? YES; NO; UNKNOWN

8. IF ANSWER TO 6 OR 7 YES, ELABORATE;

9. LIST ANY ASSOCIATED PHENOMENA (such as hail, vivid lightning heavy rain, no rain, etc.)

10. TOTAL DAMAGE ESTIMATE \$ UNKNOWN 11. TOTAL DEATHS NONE

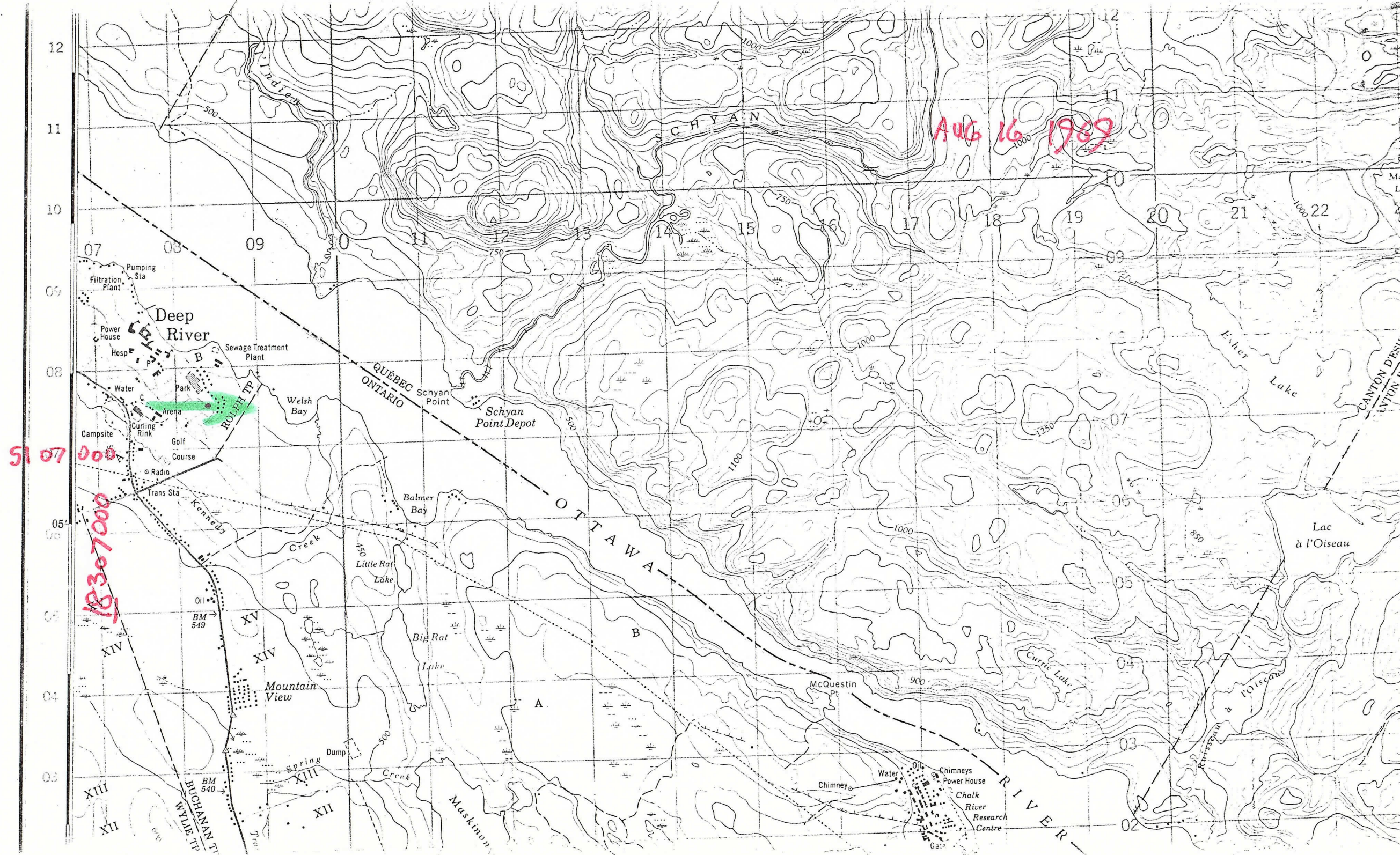
12. TOTAL INJURED NONE 13. TOTAL HOMELESS NONE

14. LIST ALL REFERENCES THE NORTH RENFREW TIMES 20.8.1969 PERSONAL COMMUNICATION WITH EYEWITNESS MRS ASTILL (613) 584-2745.

15. SUMMARIZE REMARKS PERTAINING TO (a) FUNNEL; (b) INTERESTING OR CAPRICIOUS EVENTS.

(a) NO REMARKS

(b) "IN ABOUT 20 SECONDS OF WINDS ESTIMATED AT HURRICANE FORCE, TWO DISTINCT SWATHS WERE CUT THROUGH THE TREES. ONE SQUALL ENDED ITS PATH OF DAMAGE BY NEATLY FELLING A LARGE FIR TREE BETWEEN TWO HOUSES. THE SECOND SQUALL PASSED BEHIND (THE HOUSES ON DARWIN CR) WRECKED THE COWK WAGON THAT HAS BEEN A UNIQUE FEATURE OF MANY EVENTS IN DEEP RIVER... AND THEN LEFT A SPECTACULAR TRACK OF FALLEN TREES EXTENDING OFF INTO THE BUSH. ELSEWHERE TWO BOATS BLOWN OFF TRAILERS AND MOORED SAILBOATS WERE CAPSIZED.



AUG 16 1989

51 07 000

18307000

Deep River

SCHYAN

CHALK RIVER

QUÉBEC

ONTARIO

OTTAWA

Power House

Sewage Treatment Plant

Schyan Point Depot

Filtration Plant

Pumping Sta

Hosp

Park

Arena

Golf Course

Curling Rink

Trans Sta

Oil

BM 549

BM 540

Mountain View

Spring

Dump

Creek

Mashikon

WILIE TP

BUCHANAN TP

ROLPH TP

WELSH BAY

BALMER BAY

LITTLE RAT LAKE

BIG RAT LAKE

WELSH BAY

SCHYAN POINT

WELSH BAY

WELSH BAY

WELSH BAY

WELSH BAY

WELSH BAY

WELSH BAY

WELSH BAY

WELSH BAY

WELSH BAY

WELSH BAY

WELSH BAY

WELSH BAY

WELSH BAY

WELSH BAY

WELSH BAY

WELSH BAY

WELSH BAY

WELSH BAY

WELSH BAY

WELSH BAY

WELSH BAY

WELSH BAY

WELSH BAY

WELSH BAY

WELSH BAY

WELSH BAY

WELSH BAY

WELSH BAY

WELSH BAY

WELSH BAY

WELSH BAY

WELSH BAY

WELSH BAY

WELSH BAY

WELSH BAY

WELSH BAY

WELSH BAY

WELSH BAY

WELSH BAY

WELSH BAY

WELSH BAY

WELSH BAY

WELSH BAY

WELSH BAY

WELSH BAY

WELSH BAY

WELSH BAY

WELSH BAY

WELSH BAY

WELSH BAY

WELSH BAY

WELSH BAY

WELSH BAY

WELSH BAY

WELSH BAY

WELSH BAY

WELSH BAY

WELSH BAY

WELSH BAY

WELSH BAY

WELSH BAY

WELSH BAY

WELSH BAY

WELSH BAY

WELSH BAY

WELSH BAY

WELSH BAY

WELSH BAY

WELSH BAY

WELSH BAY

WELSH BAY

WELSH BAY

WELSH BAY

WELSH BAY

WELSH BAY

WELSH BAY

WELSH BAY

WELSH BAY

WELSH BAY

WELSH BAY

WELSH BAY

WELSH BAY

WELSH BAY

WELSH BAY

WELSH BAY

WELSH BAY

WELSH BAY

WELSH BAY

WELSH BAY

WELSH BAY

WELSH BAY

WELSH BAY

WELSH BAY

WELSH BAY

WELSH BAY

WELSH BAY

WELSH BAY

WELSH BAY

WELSH BAY

WELSH BAY

WELSH BAY

WELSH BAY

WELSH BAY

WELSH BAY

WELSH BAY

WELSH BAY

WELSH BAY

WELSH BAY

WELSH BAY

WELSH BAY

WELSH BAY

WELSH BAY

WELSH BAY

WELSH BAY

WELSH BAY

WELSH BAY

WELSH BAY

WELSH BAY

WELSH BAY

WELSH BAY

WELSH BAY

WELSH BAY

WELSH BAY

WELSH BAY

WELSH BAY

WELSH BAY

WELSH BAY

WELSH BAY

WELSH BAY

WELSH BAY

WELSH BAY

WELSH BAY

WELSH BAY

WELSH BAY

WELSH BAY

WELSH BAY

WELSH BAY

WELSH BAY

WELSH BAY

WELSH BAY

WELSH BAY

WELSH BAY

WELSH BAY

WELSH BAY

WELSH BAY

WELSH BAY

WELSH BAY

WELSH BAY

WELSH BAY

WELSH BAY

WELSH BAY

WELSH BAY

WELSH BAY

WELSH BAY

WELSH BAY

WELSH BAY

WELSH BAY

WELSH BAY

WELSH BAY

WELSH BAY

WELSH BAY

WELSH BAY

WELSH BAY

WELSH BAY

WELSH BAY

WELSH BAY

WELSH BAY

WELSH BAY

WELSH BAY

WELSH BAY

WELSH BAY

WELSH BAY

WELSH BAY

WELSH BAY

WELSH BAY

WELSH BAY

WELSH BAY

WELSH BAY

WELSH BAY

WELSH BAY

WELSH BAY

WELSH BAY

WELSH BAY

WELSH BAY

WELSH BAY

WELSH BAY

WELSH BAY

WELSH BAY

WELSH BAY

WELSH BAY

WELSH BAY

WELSH BAY

WELSH BAY

WELSH BAY

WELSH BAY



Scale: 0 5 10 20 30 miles
0 10 20 30 kilometers
SEE CONTENTS PAGE FOR SYMBOL LEGEND

ST. LAWRENCE ISLANDS
NAT'L PARKS
(THOUSAND ISLANDS)
MAIN SEASON
early June - late Oct.

LAKE ONTARIO
247 FT ABOVE SEA LEVEL

TORONTO
EL 254

NEW TORONTO
LONG BRANCH
LAKEVIEW
PORT CREDIT

OSWEGO

New York State map 66

Paper The North Kennew Times

Date AUG 20 1969

Source Eastern Region

4 PM SAT AUG 16 1969

AUG 20 1969

E

Storm plays havoc with hydro

equipment

A violent storm accompanied by incredibly strong winds hit Deep River between four and five o'clock on Saturday afternoon and damaged equipment belonging to the Deep River Hydro Electric Commission. Hydro Superintendent R. E. Spence said that the full extent of the damage is not yet known and it may be a week before everything is finally cleaned up.

Mr. Spence said that the full force of the storm struck the east side of town which was more severely affected than the west. There has been no time to count the trees that have been uprooted but there may be as many as one hundred. Mr. Spence emphasised that these were not rotten trees but good healthy growing specimens and some cases large sections of lawn were uprooted along with them.

Fire Department Out

In three separate locations hydro main lines were severed by falling trees and it was necessary to cut off the power. Power cuts lasted anywhere up to three and a half hours. The Fire Department was called

out when wires burned after the branches of a big tree fell across the line in the rear of 51 Hillcrest, cutting the main line in two so that it had to be spliced. Fire Captain Fowler said that there was in fact nothing for the firemen to do but wait for the hydro men to cut off the power. The use of fire fighting equipment on high voltage wires while standing in torrents of rain would have been asking for trouble.

Lightning Struck Too

The main line was also cut on Silvie Street and at the rear of 3 Lower Algonquin Street. The Fire Department was also called to these locations. Subsidiary lines were affected in four other locations. There were three direct strikes by lightning Mr. Spence said.

The rural circuits were also affected and the main line was cut behind the Texaco Station on Highway 17 causing further damage to the Commission's equipment. Mr. Spence had nine men out helping to deal with the emergency - all he could get. They were busy again most of Sunday and will be engaged on the cleanup most of the week. No estimate of the monetary value of the damage is possible at this stage.

East End Badly Hit

A resident reports that severe local devastation whipped through the area around Rabbit Rock at the end of Hillcrest. In about 20 seconds of winds estimated at hurricane force, two distinct swaths were cut through the trees. One swept across the top of Rabbit Rock removing all three large trees growing on the top of the rock and felling more than 20 others on this Island of Town parkland. This squall ended its path

of damage by neatly felling a large fir tree between two houses. The second squall passed just behind the houses on the Southeast side of Darwin Crescent, wrecked the chuck wagon that has been a unique feature of many events in Deep River which was parked in Mr. C. Astill's garden, and then left a spectacular track of felled trees extending off into the bush.

The storm also caused some havoc around the Federal Pier. Two boats were blown off trailers on the pier and suffered some hull damage and several sailboats moored, and with bare poles, were capsized.

Wind Strength Estimated

Dr. P. J. Barry, meteorologist of the Environmental Research Branch at CRNL examined his instruments on Monday and found that two inches of rain fell in fifty minutes in the Perch Lake area at the height of the storm. The wind gauge in the same area indicated a highest gust at thirty feet of 30 miles per hour. At the Plant, at a height of 300 feet, the highest gust was 38 miles per hour.

Dr. Barry explained that a "fresh gale" of Force 8 on the Beaufort Scale is defined as breaking twigs off trees. Force 8 is from 39 to 46 miles per hour. Force 9, a "strong gale" is defined as causing damage to structures and varies from 47 to 54 miles per hour.

Dr. Barry doesn't think there was any such damage in Deep River. His impression was that the trees which came down were either in poor condition or were shallowly rooted and he is confident that in Deep River the strength of the wind didn't exceed 40 to 45 miles per hour which would agree very well with observations made at the Plant.

584-2745.
SPOKE TO MRS ASTILL WHO WAS WATCHING STORM FROM HER WINDOW. SHE SAW TREES GOING DOWN BUT DIDNT HEAR ANY UNUSUAL NOISE. SHE ESTIMATES WIDTH OF DAMAGE AS ABOUT "WIDTH OF AN ORDINARY HOUSE"
DIDNT KNOW LENGTH OF TRACK.

R.E. SPENCE HOME

584-3649

WORK 584-4142

MRS. ASTILL (613) 584-2745.



Darwin Crescent, Rabbit Rock

Phoned by P.E. Nov 17/80. for location of damage path. Direction was about from W to E.

Collingwood Enterprise-

Bulletin, Ont.

Circ. 4,323

August 21, 1969

4:30 pm SAT AUG 16 1969

Collingwood Experienced Flood Conditions

1055

Many Collingwood citizens spent Sunday pumping out cellars following a deluge of cloudburst proportions that saw at least three inches of rain fall on the district in less than an hour late Saturday afternoon.

The storm reached it's highest between 4:30 and five-thirty p.m. when the sudden downpour almost stopped traffic and sent about a foot of water rolling down Hurontario Street threatening a number of business houses.

The most serious situation developed at the Collingwood Sewage disposal plant when water filled the eight-foot deep cellar and completely covered the pumps. The water came within six inches of reaching the main motors but emergency pumps kept it from rising further until the rain suddenly came to a halt. If the water had reached the main 550 motor the sewage disposal operation would have been seriously affected.

The emergency storm drain in front of the Collingwood Shipyards was unable to take the overflow and the water formed a miniature lake around the C.N.R.

depot for an area taking in several blocks, and bubbled up through the manholes there and at other locations.

The north west end of the Collingwood Community Park, including the ball diamond and the soccer pitch, was completely inundated for several hours.

Firemen answered a call to the Dorchester Hotel when smoke was seen emerging from the cellar. It turned out that excess water had reached the electric motors and started them smoking. There was no fire damage.

The police office switchboard was jammed with emergency calls and police officers had to wear hip rubber boots to reach the parked police cruisers in front of the office. One woman reported that her neighbour's dog was drowning on the front lawn. It turned out that the dog, a huge St. Bernard, was enjoying a bath in about a foot deep pool.

Police said no accidents were reported during the hour-long deluge.

There is no estimate of the water damage but it is expected to be fairly heavy.

4