

A.

PHOTOCOPY PICTURES.
TORNADO PROJECT SUMMARY SHEET

F = 0

(16. Oct 21/80)

OUT

1. DATE AND TIME **JUNE 11 1968. 1055 E.S.T.**
2. LOCATION OR PATH (attach map) **BARRIERFIELD MILITARY CAMP, NEAR KINGSTON.
FROM 210°**
3. PATH LENGTH ☒ NOT KNOWN ☐ <1mi; ☐ 1-4mi; ☐ 5-10mi; ☐ 11-50mi; ☐ LENGTH IF >50mi
4. PATH WIDTH **U** 5. TORNADO PART OF SQUALL LINE? ☐ YES; ☐ NO; ☐ UNKNOWN
6. ANY UNUSUAL COLORATION? ☐ YES; ☐ NO; ☒ UNKNOWN
7. ANY UNUSUAL SOUND? ☐ YES; ☐ NO; ☒ UNKNOWN
8. IF ANSWER TO 6 OR 7 YES, ELABORATE;
9. LIST ANY ASSOCIATED PHENOMENA
(Such as hail, vivid lightning heavy rain, no rain, etc.)
10. TOTAL DAMAGE ESTIMATE \$ **U** 11. TOTAL DEATHS **NONE**
12. TOTAL INJURED **NONE.** 13. TOTAL HOMELESS **NONE**
14. LIST ALL REFERENCES
A.E.S INTERNAL WX TRAFFIC FROM YG.K.
15. SUMMARIZE REMARKS PERTAINING TO (a) FUNNEL; (b) INTERESTING OR CAPRICIOUS EVENTS.
- (a) FUNNEL FORMED OVER LAKE ONTARIO, AND MOVED INLAND. PUBLIC REPORTED IT TO YG.K. WX OFFICE.
- (b). Two houses received minor damage, ~~Four~~ houses lost roofing.
Many trees in the path destroyed.

WORKSHEET

IDTO 0696802

C500

① ORIGIN x 18382500
 y 4898700

⑤ Standard Error S_x

② LIFT-OFF x_1 18383300
 y_1 4899500

⑥ Standard Error S_y

③ $(x_1 - x) = 800$

④ $(y - y_1) = 800$

⑦ DAMAGE LENGTH

$L = [(x_1 - x)^2 + (y - y_1)^2]^{1/2}$

⑧ $\alpha = \tan^{-1} \frac{|y - y_1|}{|x - x_1|}$

③ + ④ $\rightarrow r, \theta = 1131 m$

$x \leftrightarrow y = 50^\circ$

⑨ Standard Error $S_L = (S_x^2 + S_y^2)^{1/2}$

⑤ + ⑥ $\rightarrow r, \theta = 707 m C$

⑩ $\beta = \frac{\tan^{-1} S_L}{L}$

⑦ + ⑨ $\rightarrow r, \theta$
 $x \leftrightarrow y = 36^\circ$

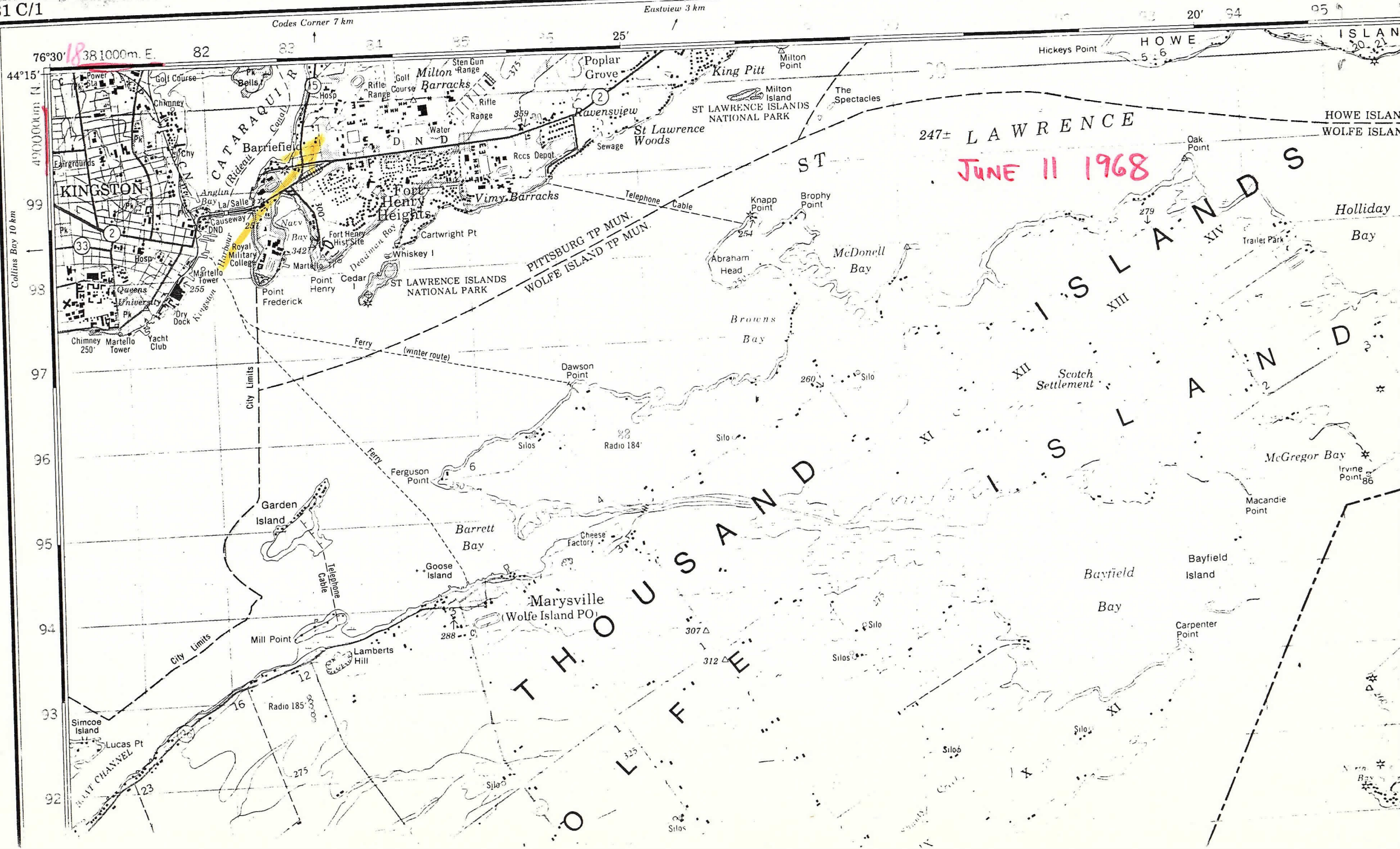
NE Quad $\phi = 90 - \alpha$

NW Quad $\phi = 270 + \alpha$

SW Quad $\phi = 270 - \alpha$

SE Quad $\phi = 90 + \alpha$

⑪ $\phi = 220^\circ$



OW
UL
ZD
XU
TR
QG

1968 JUN 12 14 56

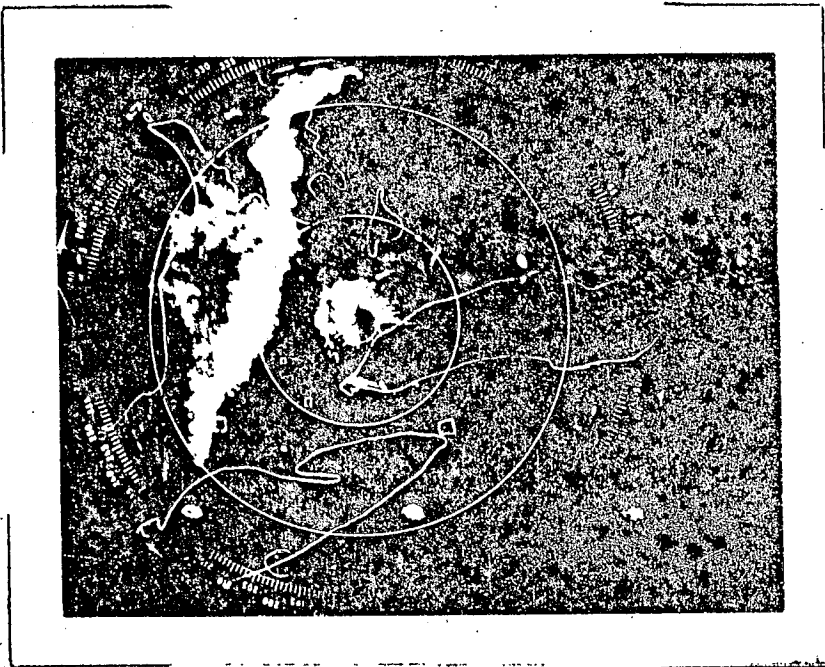
W RWU 360/145 5/165 W15+

GK NOTE FCSTR YZ
PUBLIC REPORT OF TORNADO SIGHTED AT BARRIEFIELD CAMP
2 MILES EAST OF GK. FORMED OVER LAKE ONTARIO
THEN MOVED INLAND APROX 1155EDT. 4 MILITARY
HOUSES DAMAGED WITH LOSS OF ROOFING AND 2 MINOR DAMAGED.
MANY TREES IN PATH DESTROYED. 11JUNE 8
METEOS GK

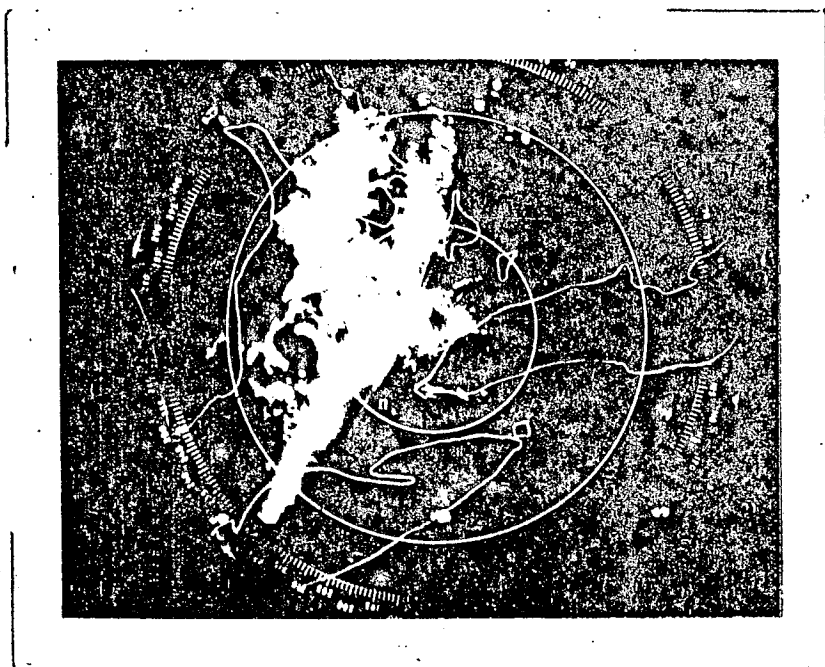
203532

TORONTO WEATHER OFFICE
POLAROID PRINTS
C BAND RADAR PRECIPITATION PATTERNS

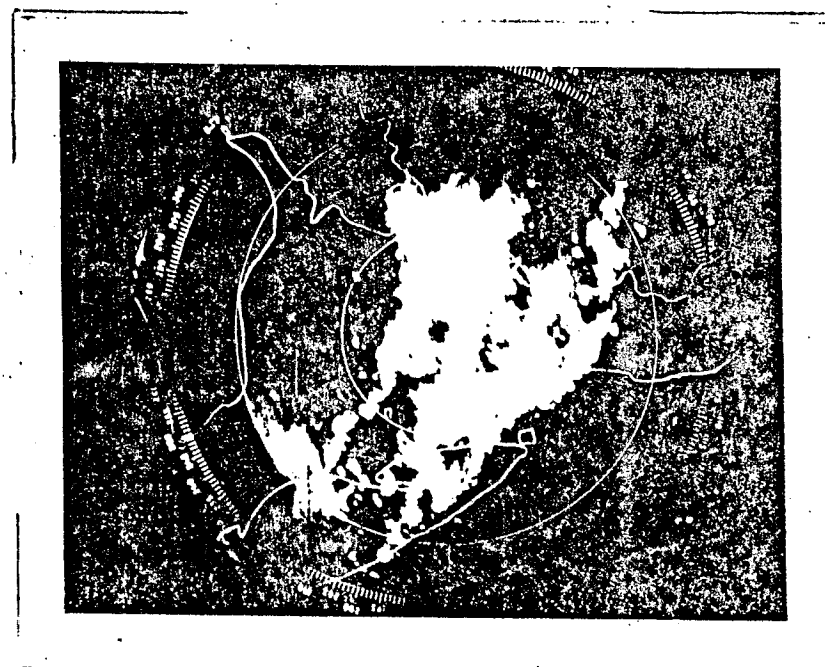
DATE: *June 11-12*
1968



TIME: *11 2317Z*
REMARKS:



TIME: *12 0005Z*
REMARKS:



Time *12 0100Z*
Radar u/s

TIME: *12 0252Z*
REMARKS: