

B

F=0

LF 6-OCT 2/1980  
ONT-QUE

1. DATE AND TIME July 1-7-1968 1200 EST

2. LOCATION OR PATH (attach map) BRIDGE END TO ST TELESPHORE, QUE  
ONT, (See Quebec) 0696821

3. PATH LENGTH  NOT KNOWN  <1mi;  1-4mi;  5-10mi;  11-50mi;  LENGTH IF >50mi

4. PATH WIDTH UNKNOWN 5. TORNADO PART OF FUUNEL LINE?  YES;  NO;  UNKNOWN:

6. ANY UNUSUAL COLORATION?  YES;  NO;  UNKNOWN

7. ANY UNUSUAL SOUND?  YES;  NO;  UNKNOWN

8. IF ANSWER TO 6 OR 7 YES, ELABORATE;

9. LIST ANY ASSOCIATED PHENOMENA (Such as hail, vivid lightning heavy rain, no rain, etc.)

10. TOTAL DAMAGE ESTIMATE \$ UNKNOWN 11. TOTAL DEATHS NONE

12. TOTAL INJURED NONE 13. TOTAL HOMELESS NONE

14. LIST ALL REFERENCES  
ALEXANDRIA GLEANER NEWS, JULY 4 1968.  
OTTAWA CITIZEN, JULY 2 1968.  
Telephone Interviews OCT 29, 1980 by P.J. Elias.

15. SUMMARIZE REMARKS PERTAINING TO (a) FUNNEL; (b) INTERESTING OR CAPRICIOUS EVENTS.

(a) NONE, BUT ARTICLE REFERS TO AFTERNOON 'TWISTER'

(b) BARNS LEVELLED OR ELSE ROOFS BLOWN OFF. ROOF TAKEN OFF SILO. TREES UPROOTED.

WORKSHEET

IDTO 0696821

① ORIGIN  $x$  18540000  
 $y$  5013300

⑤ Standard Error  $S_x$  200C

② LIFT-OFF  $x_1$  18546500  
 $y_1$  5012150

⑥ Standard Error  $S_y$  200C

③  $(x_1 - x) = 6500$

④  $(y - y_1) = 1150$

⑦ DAMAGE LENGTH

$$L = [(x_1 - x)^2 + (y - y_1)^2]^{1/2}$$

⑧  $\alpha = \tan^{-1} \frac{|y - y_1|}{|x - x_1|}$

③+④  $\rightarrow r, \theta = 6601 \text{ m}$

$x \leftrightarrow y = 10^\circ$

⑨ Standard Error  $S_L = (S_x^2 + S_y^2)^{1/2}$

⑤+⑥  $\rightarrow r, \theta = 283 \text{ m C}$

⑩  $\beta = \frac{\tan^{-1} S_L}{L}$

⑦+⑨  $\rightarrow r, \theta$   
 $x \leftrightarrow y = 2^\circ$

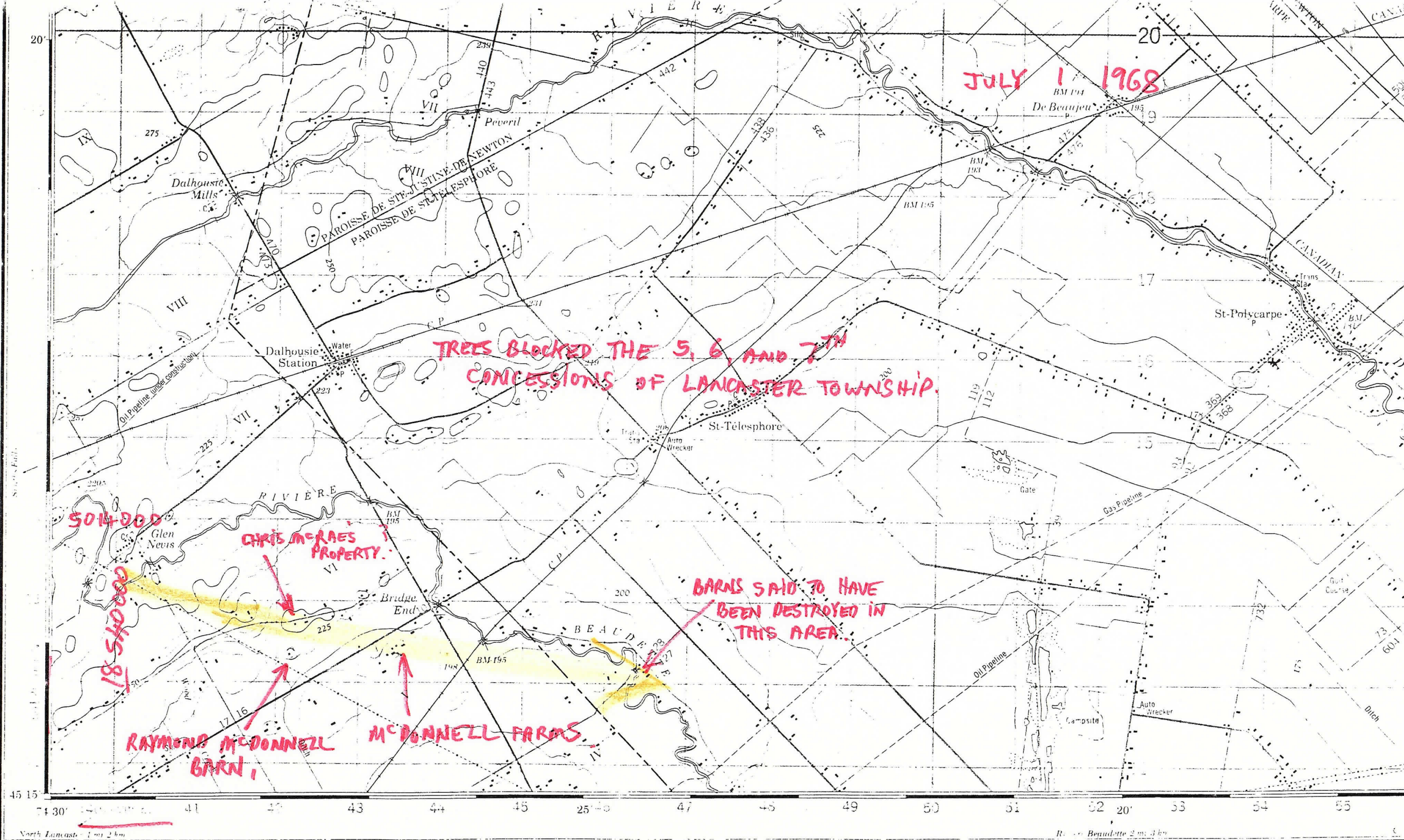
NE Quad  $\phi = 90 - \alpha$

SE quad  $\phi = 90 + \alpha$

NW Quad  $\phi = 270 + \alpha$

SW quad  $\phi = 270 - \alpha$

⑪  $\phi = 280^\circ$



JULY 1 1968

TREES BLOCKED THE 5, 6, AND 7TH  
CONCESSIONS OF LANCASTER TOWNSHIP.

CHRIS McRAES  
PROPERTY

BARN SAID TO HAVE  
BEEN DESTROYED IN  
THIS AREA.

RAYMOND McDONNELL  
BARN,

MCDONNELL FARMS

SOM-DOO

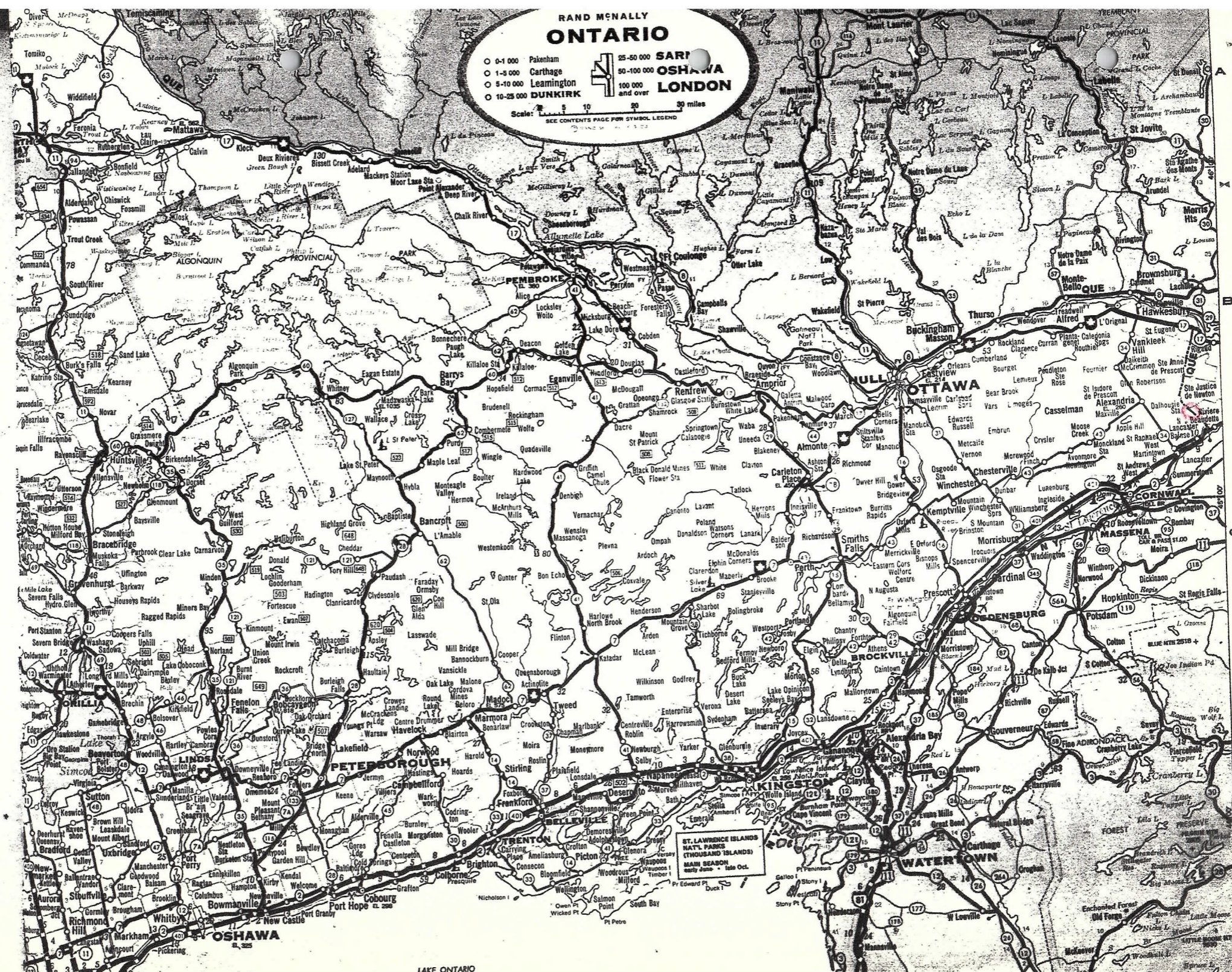
18 SHOOT  
87

# RAND McNALLY ONTARIO

0-1 000 Pakenham  
1-5 000 Carthage  
5-10 000 Leamington  
10-25 000 LUMKIRK

25-50 000 SARNIA  
50-100 000 OSHAWA  
100 000 and over LONDON

Scale: 1 5 10 20 30 miles  
SEE CONTENTS PAGE FOR SYMBOL LEGEND



ST. LAWRENCE ISLANDS  
NATL. PARKS  
(THOUSAND ISLANDS)  
MAIN SEASON  
July 1st - Oct. 1st

Phone conversation with Mr. Bernard Mc Donnell,  
and Mr. Raymond Mc Donnell, by P. Elan  
on Oct 29 1980, (613) 347-2122, (613) 347-3545.  
regarding storm of Mon July 1 1968.

The storm came from the northwest.  
Raymond Mc Donnell had 16 Elm trees  
uprooted, which crushed fences.

He said a barn was wrecked in  
Quebec, along the Beaudette River, but  
was not sure of the location.

He owned a barn that was in poor  
structural condition, near the power  
line in the 6<sup>th</sup> Con. It was blown down.

Trees were brought down and blocked  
the 5, 6, and 7<sup>th</sup> Cons. of Lancaster  
Township.

MON JULY 1<sup>ST</sup> 1968

# Torrential Rains Marred Park Celebration And Flooded Basements -- Winds Hit Area

*P. 1055*  
Torrential rains twice hit Monday's Park Opening celebration, here, in afternoon and early evening. Cellars were flooded while the accompanying winds and electrical storms caused considerable damage in sections of rural Glengarry, notably in the Bridge End area.

The rain teemed down on Alexandria for a solid hour shortly after 3 p.m. with high wind gusts and heavy thunder and lightning. It continued cloudy through late afternoon and the storm struck again shortly after 6 p.m. pouring another hour of heavy rainfall into sewers and surface water lines already taxed to capacity.

The low point on Main Street north, opposite the IGA store, became a vast lake and traffic on Highway 34 had to be diverted for a time. The basement area of J. P. Touchette's bungalow filled with water to the first floor level and there was heavy loss to heating and other equipment as well as family possessions. Many other cellars in town were partially flooded as sewers backed up and low-lying gardens were inundated.

The Derby Street entrance to the park was covered with water by the time skies cleared and the park area was muddy, too. And yet the people kept coming for the evening entertainment. It must have been a free-spending crowd for the Park and Recreation committee is pleasantly surprised at the degree of financial success attained in spite of the weather. The profits will be down, but not seriously as they might have been.

The weatherman was considered

ate enough to let the parade pass by under a scorching sun before bringing on the rain. And what a parade it was, headed by Bobby Gimby and his colorful pack of singing, swinging kids. The floats were impressive, the bands were tops. There were the colorfully costumed majorettes from Alfred, clowns, horsemen, decorated bicycles, no less than 65 of them. The Glengarry Pipe Band was out in full strength and top form. The Cote des Neiges band from Montreal was probably the finest import the parade has seen in years.

Thousands lined Main Street to enjoy the parade and most were on the park not an hour later when the storm clouds formed. Both bands had been scheduled for concerts in afternoon and evening but were dismissed by the storm. The acrobatic team had entertained and Bobby Gimby was in the midst of his second song when the rain came. He stayed around to try again at night but the second storm sent him on his way back to Toronto.

Accompanied by his daughter Lynn who helps manage his appearances, Bobby arrived Sunday afternoon. His tour of the golf course was interrupted by rain but he returned that night after rehearsals to take part in an enjoyable singsong.

Features of the Monday evening show at the park, aside from the mud and water underfoot, were the platform entertainment, the draw for the Lions \$1,000 bill and the curtain number, the popular fireworks display.

Winner of the \$1,000 bill was Louis Lalonde of Greenfield.

## Bridge End Area Hit By Twister

Monday's storms which dumped so much rain on north Glengarry, skipped St. Raphael's and points south but hit the southeast corner of the county with tornadic winds.

Hardest hit was the Bridge End area where the afternoon twister damaged farm buildings, toppled trees and broke windows. Several roads in the Glen Nevis area were blocked by fallen trees and telephone and power lines were down in several places.

At Bridge End some 25 trees fell on the farm of James A. McDonell, the roof of Bernard McDonell's silo was blown off, Chris McRae's garage and a feed barn on the farm of Raymond McDonell were levelled. Others suffering property damage included Donald W. McDonald, John D. A. Macdonald and Mark McDonell.

Two barns in the St. Raphael's area were also reported down.

*BRIDGE END*  
*JAMES A McDONELL (613) 347 2126*  
*BERNARD M' DONNELL (613) 347 3545*  
*RAYMOND M' DONNELL (613) 347 2124*  
*2*

*CHRIS McRae's garage*

*Penn*  
*5 6 7 W 1/2 of L 11*  
*meadows*  
*W 1/2 of L 13*  
*Added*  
*16 trees felled*  
*12 trees felled*  
*16 trees felled*  
*16 trees felled*

*ll*

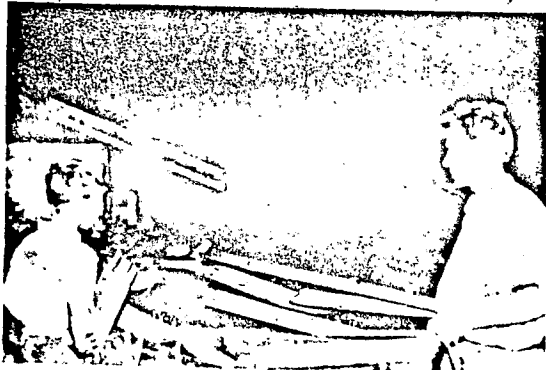
(54)

# Des dommages de <sup>\*</sup> l'ordre de \$500,000

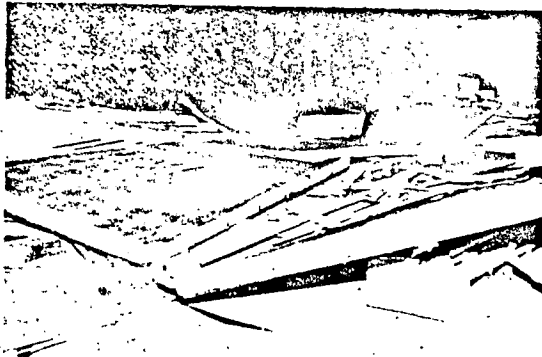
Lundi, après-midi, une violente tornade est venue gâter une magnifique journée de la Confédération dans la région. Des vents violents, des éclairs et une forte pluie a causé des dommages évalués à près de \$500,000 dans les granges, poulaillers, demeures, plantations, maisons, autos, etc

étaient littéralement balayés, sinon inondés.

La région la plus sévèrement touchée fut celle de St-Clet et St-Télesphore alors que rien ne semblait résister à la colère du ciel.



M. Lucien Vincent et son fils constatent les sérieux dommages causés à ce qui était sa grange à St-Clet.  
PHOTO PHIL HUOT



Seulement 500 poussins furent sauvés de ce poulailler appartenant à M. Raoul Besner. Photo Phil-Huot



Les enfants dormaient paisiblement dans la chambre avant de la maison de M. Jean Campeau, aux Cèdres quand cet arbre rata de peu la toiture. Photo Phil Huot



Un-poulain, affolé par les coups de tonnerre, les éclairs et le vent a pris le mors au dent et est mort, transpercé par un poteau. Photo A. Viau



Et l'on travaille à débiter cet arbre qui n'a pas su plier comme "le roseau" de la célèbre fable.

Photo A. Viau

P-1  
Press Clipping Service

715-4

P-2  
Ottario Hydro Press Clipping Service

715-4

Paper Ottawa Citizen  
Date July 2, 1968  
Source Eastern Region

MON JULY 1ST 1968

JUL - 5 1968

Power was out in some regions in Western Quebec until early this morning.

A Pointe Gatineau resident reported his power was cut when the Monday storm began about 1 p.m. and was not restored until 3 a.m. today.

Hydro - Quebec officials said they were still working on Sunday storm damage, which hit Aylmer hardest, when the Monday storm burst.

Sudden heavy showers flooded streets and filled basements as storm sewers backed up.

Although a rainfall of only .07 inches was recorded at Uplands for the early afternoon shower, the Uplands observer pointed out the brunt of the storm passed north of the airfield.

### Boy struck

The boy hit by lightning, Robert Somers, 14, of 2041 Corry St., was rushed to Riverside Hospital with severe burns.

Eastview police reported lightning set fire to the roof of the police station on Montreal Road and smashed the antenna of the two-way radio.

Firefighters from their station in the same building helped put out the blaze.

Water poured through the hole in the roof, ruining files.

Telephone service to the police station was cut for more than one hour and power was still out by 5 p.m., almost three hours after the storm began.

Power service was also disrupted in the Overbrook and Centre town areas of Ottawa for shorter periods. Electricity was cut for

several hours in Hull, Gatineau, Aylmer and other points.

For the children, though, it was a ball.

Swarms of youngsters tore into the flooding streets in Overbrook while it was still raining.

"You should have been here earlier while it was still raining," laughed Mrs. Shirley Sabourin of 272 King George St., about one hour after the storm. "The water was half way up our legs in the street."

Girls and boys of all ages, some of them fully clothed, splashed about in a small

lake at Overbrook Park at the corner of King George and Edith Streets.

Enterprising youngsters launched boats on water-clogged Claude Street near Burn Street.

Pretty girls were tossed fully clothed into the drink.

Bicyclists zoomed into the water before stalling and falling off.

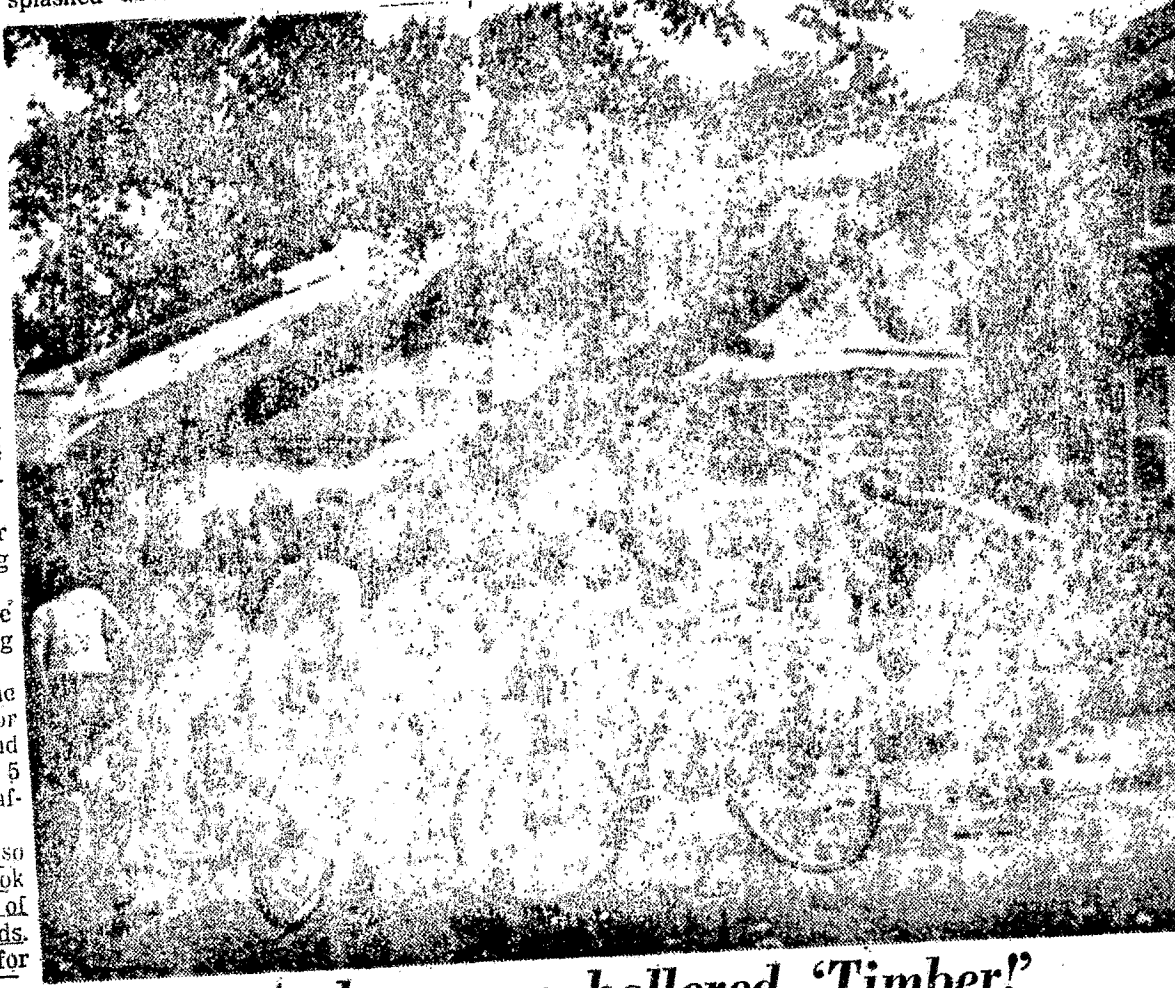
For the kids, it was a great day for a storm.

For many parents coping with flooded basements in the east end of Ottawa, it wasn't near so happy an occasion.

One group of town-house dwellers in a Tweedsmuir Avenue complex used outdoor auto plug-ins to cook meals until their house power was restored. It was out from the beginning of the 4 p.m. storm Sunday to 11 a.m. Monday.

One Sandy Hill area was without power from 1.45 p.m. to 11 p.m. Monday.

\* \* \* \* \*  
Citizen-UPI  
staff photos  
\* \* \* \* \*



And no one hollered 'Timber!'

Giant trees felled by lightning Sunday on Denbury Avenue at Byron Avenue