

A.

TORNADO PROJECT SUMMARY SHEET

F = 0

RADAR PHOTOCOPY PICTURES.

ONT.

1. DATE AND TIME **JUNE 11 1968 ABOUT. 1900 EST.**
2. LOCATION OR PATH
(attach map) **VICINITY OF PORT CARLING.
FROM 220°.**
3. PATH LENGTH NOT KNOWN <1mi; 1-4mi; 5-10mi; 11-50mi; LENGTH IF >50mi
4. PATH WIDTH **U** 5. TORNADO PART OF SMALL LINE? YES; NO; UNKNOWN
6. ANY UNUSUAL COLORATION? YES; NO; UNKNOWN
7. ANY UNUSUAL SOUND? YES; NO; UNKNOWN
8. IF ANSWER TO 6 OR 7 YES, ELABORATE; **(6) Central part of funnel dark brown, becoming lighter to the outside**
9. LIST ANY ASSOCIATED PHENOMENA
(Such as hail, vivid lightning heavy rain, no rain, etc.)
10. TOTAL DAMAGE ESTIMATE \$
11. TOTAL DEATHS **NONE**
12. TOTAL INJURED **NONE**
13. TOTAL HOMELESS **NONE**
14. LIST ALL REFERENCES
**ORILLIA DAILY PACKET AND TIMES, JUNE 13, 14, 1968.
TELEPHONE INTERVIEW WITH MR ARNOLD MAHON. (705) 765-3427
BY P. ELMS. OCT 16/80.**
15. SUMMARIZE REMARKS PERTAINING TO (a) FUNNEL; (b) INTERESTING OR CAPRICIOUS EVENTS.
- (a) The funnel was described as being "a slight S shape" and "like a crooked ice cream cone". The funnel was dark brown on the inside becoming lighter to the outside.
- (b) The funnel was seen to go out over Arthur's Bay and draw up water. A loud roaring sound was heard, the barn disintegrated and the garage seemed to rise and explode.

WORKSHEET

IDT0 0696812

300.

① ORIGIN x 17613700
 y 4995850

⑤ Standard Error S_x

② LIFT-OFF x_1
 y_1

⑥ Standard Error S_y

③ $(x_1 - x) =$

④ $(y - y_1) =$

⑦ DAMAGE LENGTH

$L = [(x_1 - x)^2 + (y - y_1)^2]^{1/2}$

⑧ $\alpha = \tan^{-1} \frac{|y - y_1|}{|x - x_1|}$

③ + ④ $\rightarrow r, \theta =$

$x \leftrightarrow y =$

⑨ Standard Error $S_L = (S_x^2 + S_y^2)^{1/2}$

⑤ + ⑥ $\rightarrow r, \theta =$

⑩ $\beta = \frac{\tan^{-1} S_L}{L}$

⑦ + ⑨ $\rightarrow r, \theta$
 $x \leftrightarrow y =$

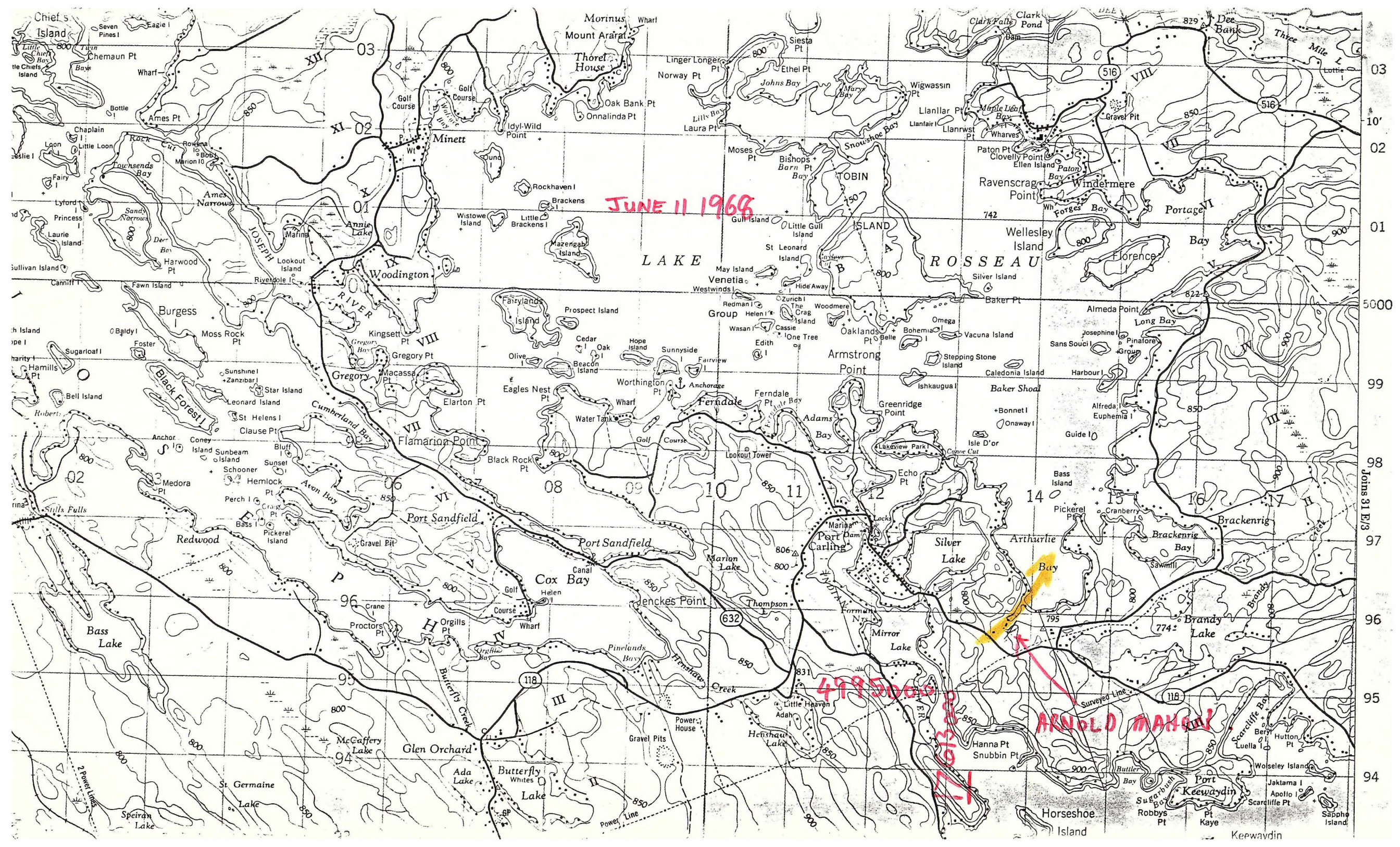
NE Quad $\phi = 90 - \alpha$

SE quad $\phi = 90 + \alpha$

NW Quad $\phi = 270 + \alpha$

SW quad $\phi = 270 - \alpha$

⑪ $\phi =$



Conversation with Mr Donald Mahon (705) 765-3427
by P. Elms, Oct 16/80, regarding the tornado that
struck his property about 1900 E.S.T. June 11 1968.

Mr Mahon observed the tornado as described
it as a "crooked ice cream cone shape" and
it had a slight S shape. The centre of the
funnel was dark brown, becoming lighter to
the outside. The tornado came from the
southwest striking Mr Mahon's building doing
considerable damage. Windows in the house
were burst out and rugs swept outside.
The tornado then went out over Arthurie
Bay drawing water up and curving to
the north.

A huge elm tree was uprooted
and fell N.E. The root system was 22
feet across.

Apparently Mr Mahon's property was
the only place damaged in that area.

2.1 (1) 7/5-2
Ontario Hydro Press Clipping Service

Paper Crillia Daily Packet and Times

Date Friday June 14, 1968

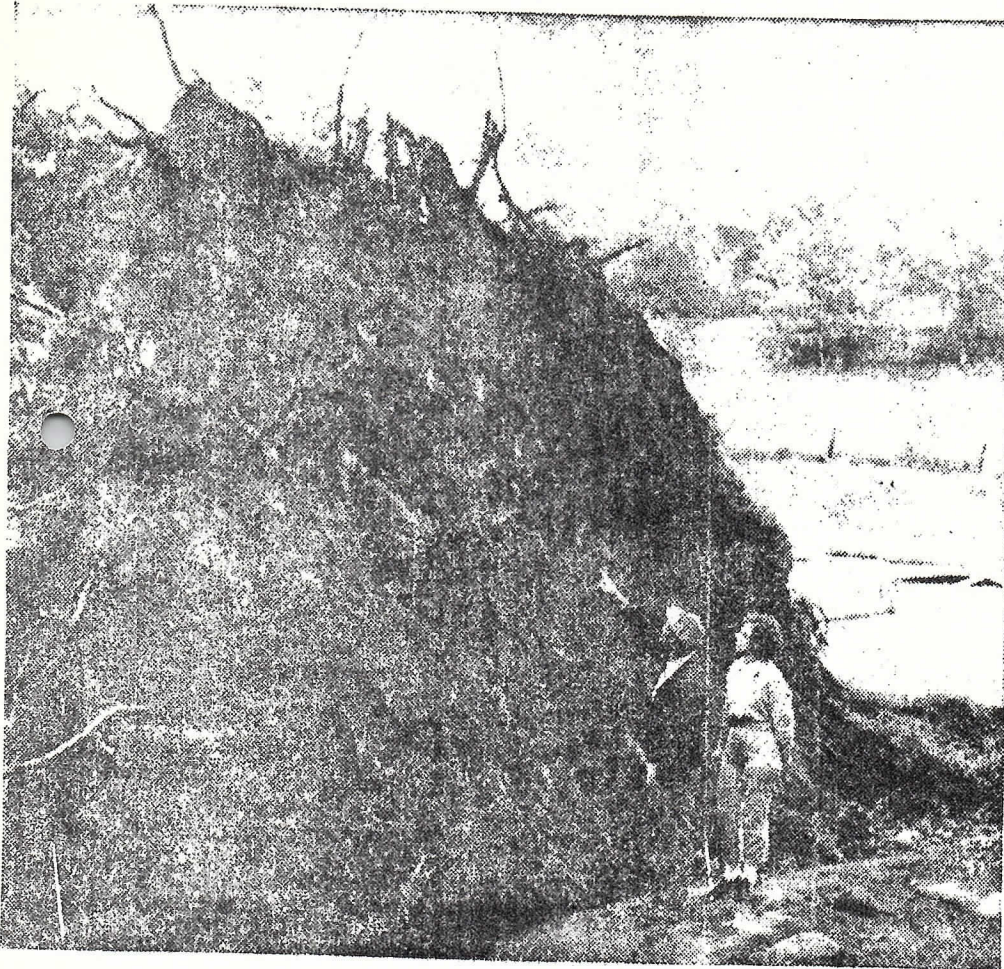
Source Georgian Bay Region

TUES JUNE 11 1968

JUN 21 1968

GB

Muskoka's 'Big Blow' Damage May Reach \$300,000



ARNOLD MAHON AND WIFE GAZE AT WALL-LIKE TREE ROOT

MINETT — This small community nestled on the west shore of Lake Rosseau has started cleaning up in the aftermath of one of the worst tornado-forse storms to strike the area in years. Two years ago a similar hit-and-miss twister touched the Leonard Lake area, flattening trees, crushing cars and flipping over a cottage on an island.

The storm Tuesday night spread over a wider area, reaching from Foote's Bay and MacTier on the south to Minett where it dealt the most severe blow.

Telephone crews worked alongside hydro workers, re-stringing lines after a night and day without communications or electricity in some sections. Other parts were restored in four to five hours. Work crews began to restore services immediately after the storm which lasted only a short while. Trees were the main cause of line breakage as they were uprooted and flung across suspended wires.

UP TO \$500,000

First reports of damage at from \$100,000 to \$150,000, have since been revised to from \$250,000 to \$300,000 as more damage areas were discovered. The most severe damage occurred at the Wallace Marina where two boathouses, one with living quarters and a parts store, were spread about the property in twisted and splintered portions. Boats were propelled through the water at high speeds while portions of boat-house roofing landed in adjoining fields. Approximately \$20,000 worth of new stock that had just arrived and had not yet been insured was damaged.

Boats stored at the marina were from as far away as Cleveland, Ohio, New York, Toronto and Oshawa. Forty were damaged. New outboard motors that had just arrived as summer stock, were smashed to the ground from their stands by the force of the wind. It was estimated that the winds were of tornado-strength, which is approximately 165 m.p.h.

" TWO YRS AGO SIMILAR TWISTER
LEONARD LAKE AREA .

SEE JULY 9 1965

P.2

Ontario Hydro Press Clipping Service

715-2

Paper Crillia Daily Packet and Times

Date June 14, 1968

Source Georgian Bay Region

(2)

JUN 14 1968

7:45 PM TUES JUNE 11 1968

GB

The force was so great that it lifted a 40 x 60 foot boat storage building 35 feet into the air where it was suspended momentarily before flying into particles, and landing on a golf course about one quarter mile away.

Over 30 men joined in the clean up with front end loaders, shovels and bare hands.

Trees caused little damage in the immediate area of the

There were no injuries suffered during the storm, which was accompanied by heavy rains, lightning and thunder.

Lloyd McClelland described what he saw from the marine store which escaped serious damage. "It was a three to four foot water drift-like snow drifting. A curtain reached from the water to the sky, making it impossible to see beyond."

Electric clocks stopped in the area of the marina here at Minnett at 7:45 p.m. At the south end of the Lake they stopped at 7:55 p.m., ten minutes later.

Wallace Marina, but at an adjoining property large trees were uprooted and lay in a tangled mass. Workmen, using power saws started the chore of cleaning up the property owned by Bruce Wallace, brother of the marine owner. The boathouse on this location only a few feet east of the marina, was torn to shreds, and one section lay 40 feet away on the side of a hill.

FARMER ESCAPES

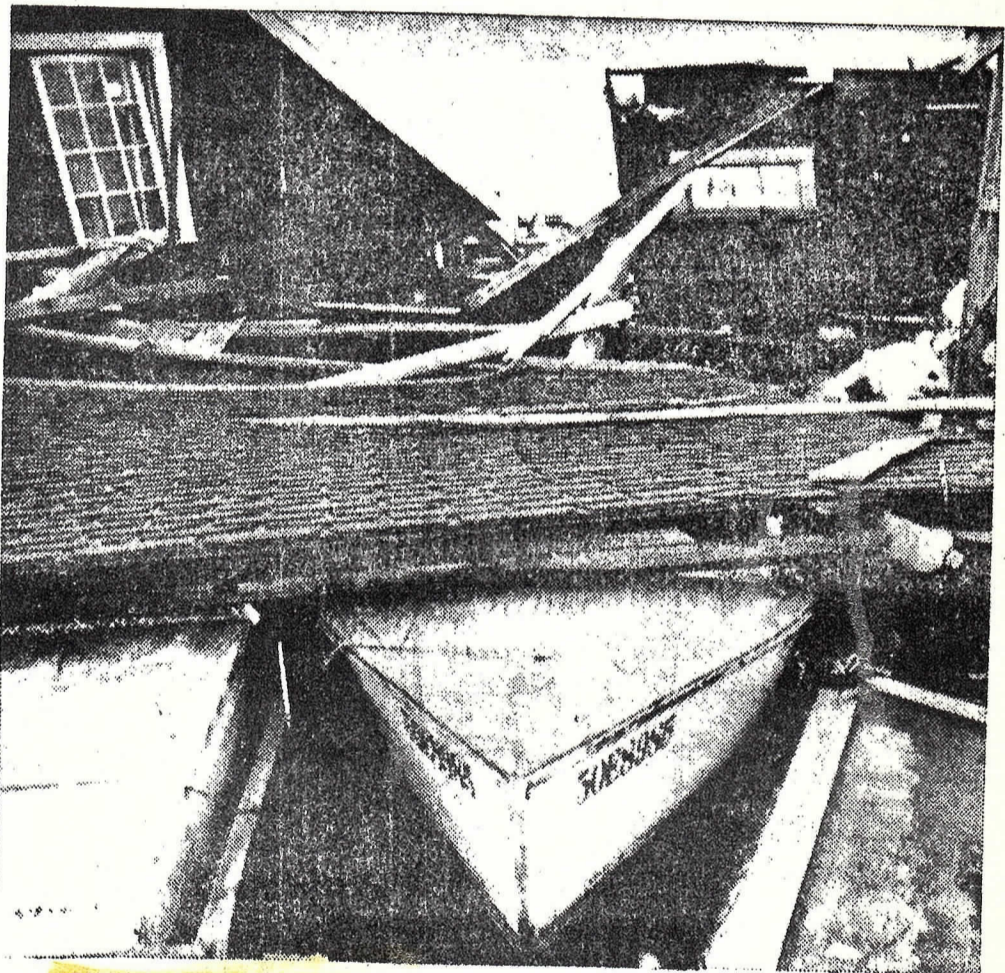
Eight miles away to the southeast, a farmer narrowly escaped being crushed when his barn collapsed from the force of the storm.

Arnold Mahon owner of the property was leaving the barn as the wind tore over a hill to the east. "It was an orange and brown cloud of dust, roaring so loud that it almost eliminated the sound of the barn being demolished," said Mr. Mahon. Over 50 trees, the barn, a garage and pigeon coop were flattened. Some young pigeons were killed when the coop was lifted from its foundation and smashed against a tree.

"It was like a nightmare," Mr. Mahon said. "The barn groaned and creaked just before I rushed toward the house." He was thrown against a fence and held there during the short duration of the forceful wind.

Six horses, two cows, and a dog escaped injury. They were in the stable below the main floor; the upper portion of the barn was flattened. A huge tree near the barn was uprooted, creating a natural wall.

Roads in the area were scattered with fallen trees and limbs. On the east shore road, cottage owners will find several boats overturned when they return for their weekly visit. Work crews from the township were working around the clock in order to clear the debris from roads.



MINETT MARINA WAS IN SHAMBLES AFTER TORNADO HIT

Orillia Packet & Times, Ont.

Circ. 7,565

June 13, 1968

TUES JUNE 11 1968

Wind Like "Curtain" Leaves Path Of Ruin

MINETT — Tornado-strength winds that lasted only about 10 seconds smashed buildings, uprooted scores of trees, and picked up roofs and boats, and carried a shed over a quarter mile during Tuesday night's storm.

Damage was estimated at between \$100,000 and \$150,000 to one Lake Rosseau marina alone as residents sifted through the wreckage today. Word of the disaster didn't get out until Wednesday, because roads were blocked by fallen trees and power lines were down.

A 90 by 60 marine building, including a stock room, boat slips and living quarters, was flattened, crushing several boats and throwing merchandise into the boat slips nearby. No one was in the building when the storm struck, shortly before 8 p.m. Tuesday.

HEAVY IN AIR

An employee of Wallace Marina said how another boat storage building was lifted into the air.

"It seemed to hang there for a moment then it disintegrated with pieces flying in all directions," said Lloyd McClelland.

Part of the building was located a quarter mile away on the golf course owned by Cleveland House. McClelland stated: "A boat tied at the end of the docks near the gas pumps flew past the boat house, landing on

the shore over 300 feet from the end of the dock. A boat moored in the boat slips of the storage building, sped backwards through the water as if it was at full throttle in reverse."

It was located later against the opposite shore a half mile from its moorings.

"Bubs" Irvin Wallace Sr., founder of the marina, estimated that 40 of the 50 boats will require repairs.

McClelland said the storm "drifted across the bay like a snowdrift three feet high with a curtain rising skywards blocking the view of islands in the bay."

Irvin Wallace, manager of the marina stated: "It was a wipe out. Over eight years of growth in our business has gone, it will require complete reconstruction."

"We'll start again," said Mrs. Wallace.

An adjoining property owned by Mr. Wallace's brother, Bruce, was also hard hit. A metal roof from his boat house was twisted off and flew 200 feet coming to rest 40 feet up a bank. The balance of the boat house disintegrated and was scattered. About 15 to 20 trees were uprooted.

A short distance away, the Paignton House lawn was torn and sidewalks smashed as uprooted trees were flattened. One tree rested on the roof of the

main lodge.

Across the bay at the Cleveland House, a cottage suffered extensive damage when the roof was lifted and set behind the cottage in a vertical position. "It was miraculous that no one was injured," said Minnett fire chief Jack Nichols.

CAUGHT OUTSIDE

Eight miles south on the opposite shore, a barn, garage and pigeon shed were flattened.

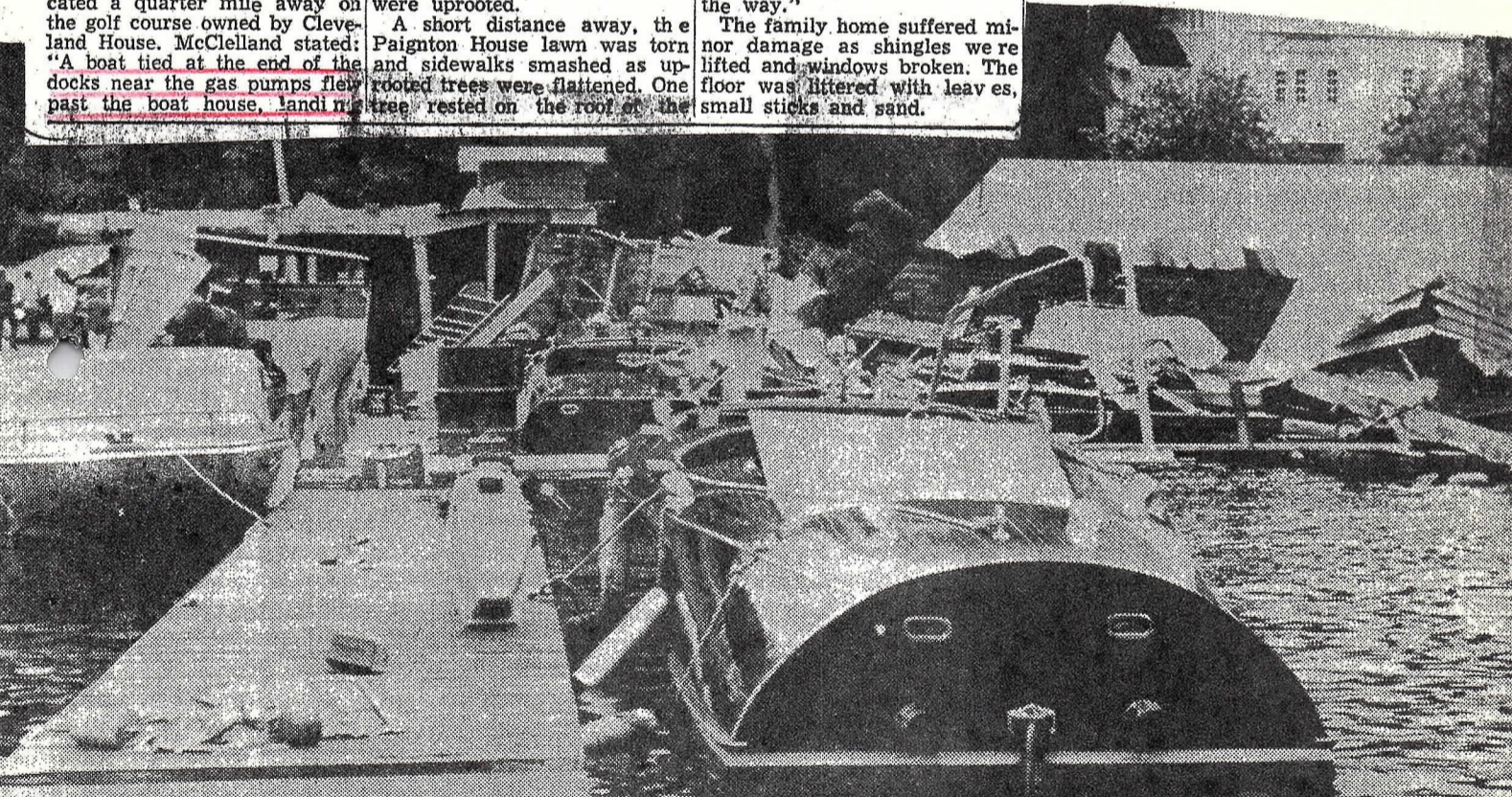
Arnold Mahon, owner of the property said: "I heard a loud roaring sound and headed out of the barn for the house. I was carrying a hammer, level and square that was wrenched from my hands and thrown 50 to 60 feet in front of me. The wind drove me against the barnyard fence as the barn crashed behind me."

He described the scene as "an orange-red cloud speeding toward the barn. Six saddle horses and two steers along with Trixie, the family dog were in the lower level of the barn and escaped injury."

Mr. Mohan's son, Bob, said the garage seemed to rise and explode.

"The pigeon coop housing several pigeons was carried about 50 feet crashing into a tree on the way."

The family home suffered minor damage as shingles were lifted and windows broken. The floor was littered with leaves, small sticks and sand.



THIS WAS THE SCENE OF DESTRUCTION AT WALLACE MARINE ... HOUSE BEHIND WASN'T TOUCHED
Big roof at right was from boathouse out of picture, main boathouse simply disintegrated

715-4

Ontario Hydro Press Clipping Service

Paper Orillia Packet and Times

Date June 17/68

Source Georgian Bay Region

JUN 19 1968

FB

TUES JUNE 11 1968

Storm Smashes Building Boats, Damage \$100,000

MINETT — Storm damage to Wall's Marina here last night has been roughly estimated to be in the neighborhood of \$100,000.

Forty boats were damaged, a storage building was flattened and other equipment damaged. One boat was picked up by the 50 m.p.h. winds and flung one-quarter of a mile away, landing on the Paignton House Golf course.

Iris Wallace, wife of owner Irving "Bubs" Wallace, said there was no way of giving an exact account of the damage, but that it was close to \$100,000.

JUNE 11 Caught In Boat During Storm Two Youths Are Found Safe

FOOTE'S BAY — A search for two Toronto youths caught in last night's storm, in their small craft, ended when they were found safe by the OPP Marine crew.

Police found David Lait, 16, and Jim Naysmith, 17, at 1:15 a.m. this morning after searchers combed the shores in search of the two boys, following a severe storm that hit the area shortly after 8 p.m. The boys had made it to shore near Port Sandfield off Avon Bay. They told police that they had been searching for a friend's cottage in the area when the storm struck.

During the storm, 50 m.p.h. winds were reported at Muskoka Airport.

The boys left the Woodruff Bay area on Lake Joseph at 7:15 p.m. in a 13-foot boat powered by an 18 h.p. motor, to cross Lake Joseph for Avon Bay.

hydro supply service from their home. Workmen from the Gravenhurst Light and Water Commission were kept busy.

In other parts of town, street lighting was out of order and, on the east end of Royal St., a branch from a tree broke the hydro line feeding that area. On John St. south, two limbs from trees blocked a portion of the street.

Little Damage In Orillia Area

Area police departments reported minor damage caused as a result of Tuesday night's storm. At Riverside Beach, a tree fell to the ground across the 9th Concession but was removed without delay.

In the Midland area, a number of boats on the Georgian Bay experienced difficulty in navigation, and two boats were towed to shore, report the Midland OPP.

Barrie city police report that the electric generator, that is used at the police station in case of emergency, started automatically when lightning struck a hydro transformer in the Anne St. industrial area. The power was not restored for an hour and a half.

TUES JUNE 11 1968

with clipping 7-2
June 21 / 68

- ① W. H. [unclear]
- ② M. J. [unclear]
- ③ L. [unclear]
- ④ E. W. [unclear]
- ⑤ Form Clipping File
R + R.

OPERATIONS DIVISION - HEAD OFFICE
File No. E 4 R - [unclear]

Muskoka mops up after a five-second tornado

PORT CARLING — (Staff) — A mop-up operation continues today at Wallace Marina on Lake Rosseau where a freak tornado pounced Tuesday night causing an estimated \$250,000 damage.

In a pin-point attack the tornado funnel swooped on a boathouse and sucked it 200 feet into the air pitching it down a half-mile away on a golf course.

"It's something never happened in Muskoka," said Irwin Wallace jr.

Mr. Wallace and some friends were standing in the main marina building 30 feet from the boathouse when the wind cone struck.

"It was all over in five seconds," he said. "The damage was confined to a strip about 50 feet wide and 500 feet long."

More than 40 pleasure

craft were damaged as they were hurled into the marina docks and each other by the wind.

Mr. Wallace said at least six of the boats, valued at about \$20,000 each, were wrecked.

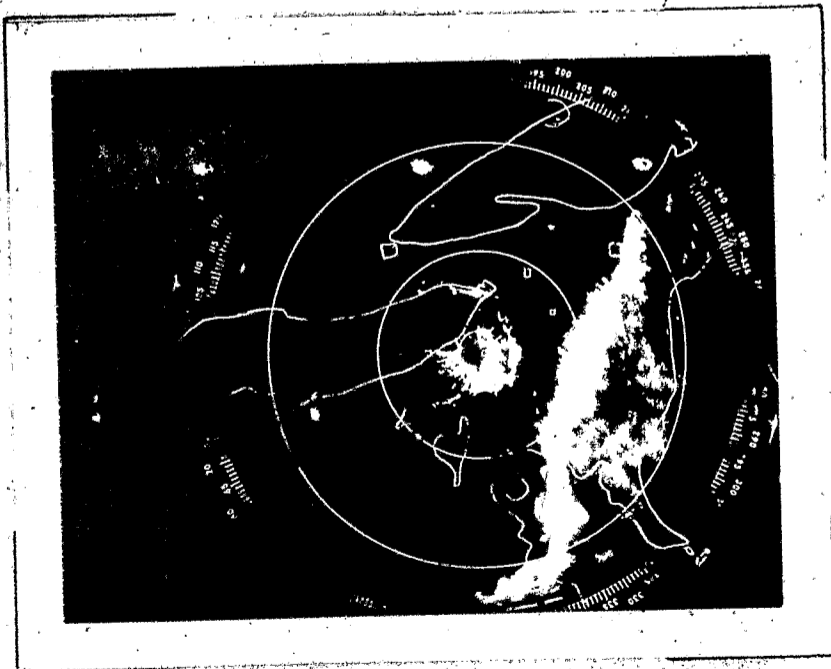
He said the freak tornado seemed to leave the surrounding cottages relatively free of damage.

Only one family some

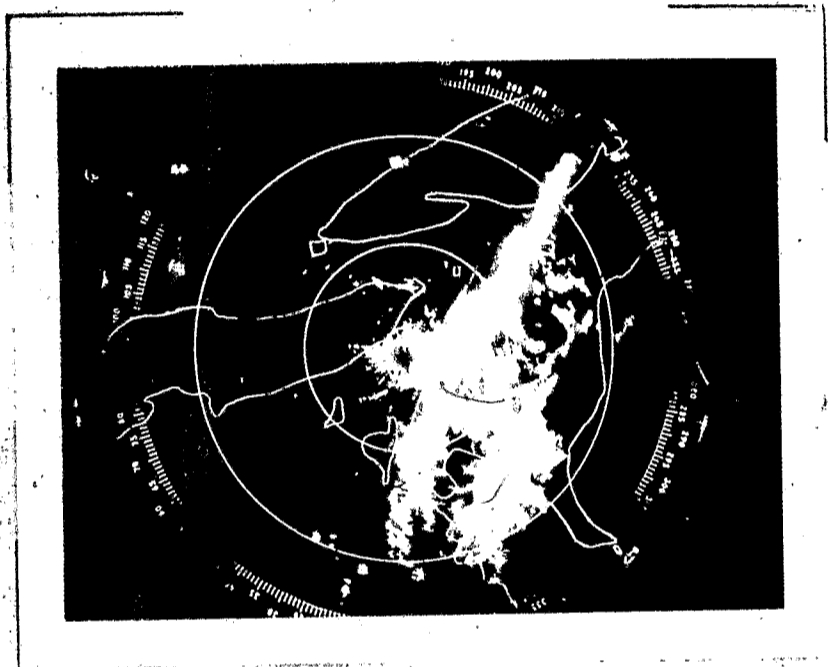
TORONTO WEATHER OFFICE
POLAROID PRINTS
C BAND RADAR PRECIPITATION PATTERNS

DATE: *June 11-12*
1968

TIME: 11 2317z
REMARKS:



TIME: 12 0005z
REMARKS:



Time 12 0100z
Radar u/s

TIME: 12 0215z
REMARKS:

