

B

PHOTOS OF DAMAGE
TORNADO PROJECT SUMMARY SHEET

F=0

P.E. JULY 10/100
ONT.

1. DATE AND TIME OCT 5 1964 1930 EST

2. LOCATION OR PATH (attach map) W TO E OFF OF LAKE HURON. NEAR HOPKINS BAY, BRUCE PENINSULA. FROM 280° 06964-05

3. PATH LENGTH NOT KNOWN <1mi; 1-4mi; 5-10mi (4mi); 11-50mi; LENGTH IF >50mi

4. PATH WIDTH 40 YDS 5. TORNADO PART OF SQUALL LINE? YES; NO; UNKNOWN:

6. ANY UNUSUAL COLORATION? YES; NO; UNKNOWN

7. ANY UNUSUAL SOUND? YES; NO; UNKNOWN

8. IF ANSWER TO 6 OR 7 YES, ELABORATE;
⑦ A roaring whistling noise.

9. LIST ANY ASSOCIATED PHENOMENA (Such as hail, vivid lightning heavy rain, no rain, etc.)
AND THUNDER AT THE TIME. ALSO HAIL

10. TOTAL DAMAGE ESTIMATE \$ 11. TOTAL DEATHS NONE

12. TOTAL INJURED NONE. 13. TOTAL HOMELESS NONE

14. LIST ALL REFERENCES
WILKINSON ECHO. THURS. OCT 8 1964
LONDON FREE PRESS OCT 6 1964

15. SUMMARIZE REMARKS PERTAINING TO (a) FUNNEL; (b) INTERESTING OR CAPRICIOUS EVENTS.
No funnel was observed as it was dark.
The tornado was narrow, coming off Lake Huron, and cutting a 40 yd swath through a bush before striking the Munn farm. A barn roof of laminated truss construction was blown off and debris carried some 200 feet, to the farm house. Two chimneys were damaged by the debris, and 2x4's were driven into the ground. Hay in the barn was not disturbed.
The Munn's were away at the time the tornado struck, but returned soon after. The house had a bad, old, dusty smell; kitchen cupboard doors were open, and there was no water in the toilet bowl.
The tornado apparently ended a few hundred feet east of the Munn farm in a swamp.

WORKSHEET

IDTO 0696405

① ORIGIN x 17444900
 y 5006400

⑤ Standard Error S_x
 500 C

② LIFT-OFF x_1 17450000
 y_1 5006300

⑥ Standard Error S_y
 500 C

③ $(x_1 - x) = 5100$

④ $(y - y_1) = 100$

⑦ DAMAGE LENGTH

$L = [(x_1 - x)^2 + (y - y_1)^2]^{1/2}$ ⑧ $\alpha = \tan^{-1} \frac{|y - y_1|}{|x - x_1|}$

③ + ④ $\rightarrow r, \theta = 5101 \text{ m}$

$x \leftrightarrow y = 1^\circ$

⑨ Standard Error $S_L = (S_x^2 + S_y^2)^{1/2}$

⑤ + ⑥ $\rightarrow r, \theta = 707 \text{ m}$

⑩ $\beta = \frac{\tan^{-1} S_L}{L}$

⑦ + ⑨ $\rightarrow r, \theta$
 $x \leftrightarrow y = 8^\circ$

NE Quad $\phi = 90 - \alpha$

SE Quad $\phi = 90 + \alpha$

NW Quad $\phi = 270 + \alpha$

SW Quad $\phi = 270 - \alpha$

⑪ $\phi = 271^\circ$

EDITION 2

17455000

40'

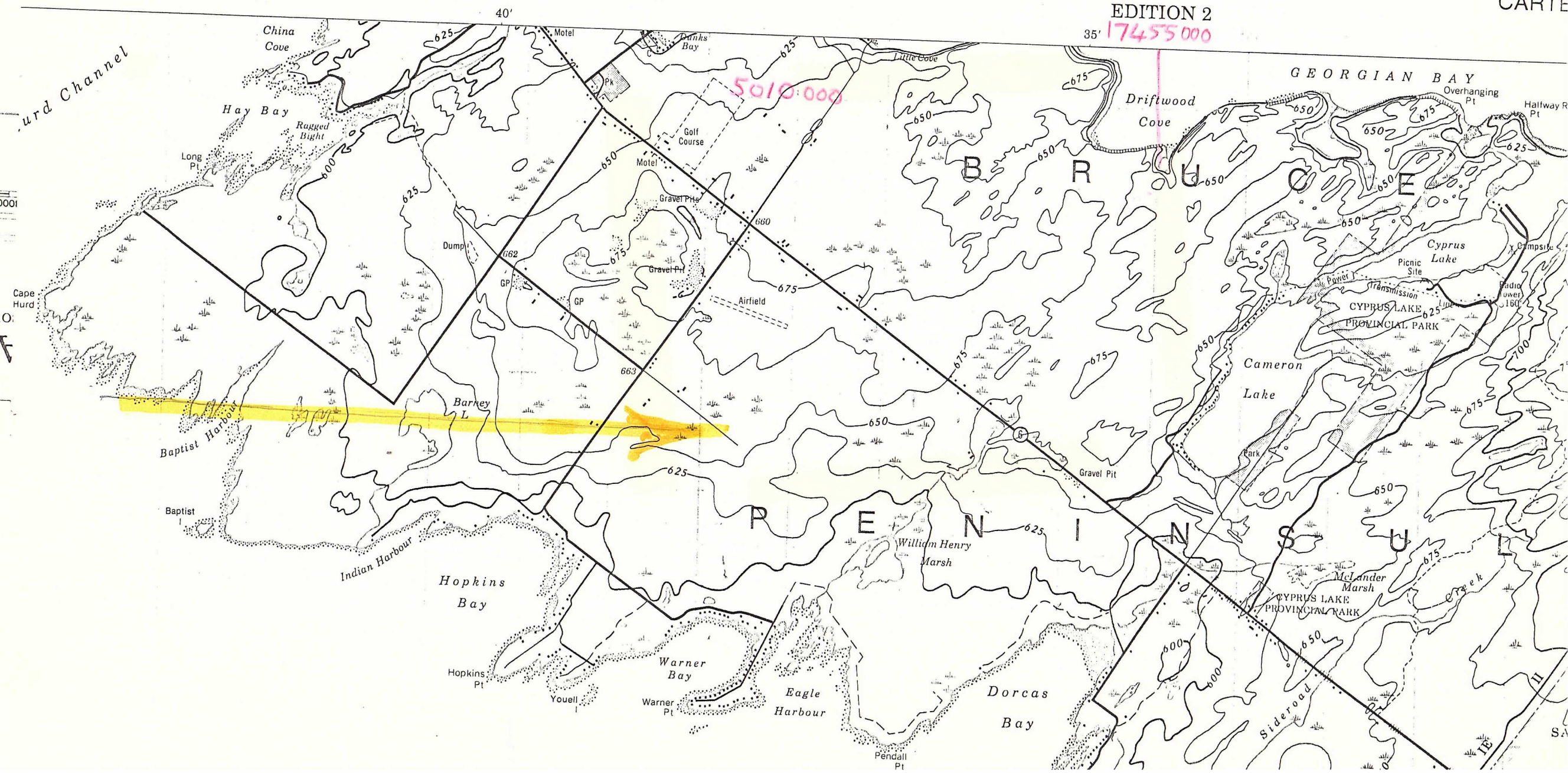
35'

urd Channel

0001

10

F



5010000

GEORGIAN BAY

BRUENELL

PENINSULA

CYPRUS LAKE PROVINCIAL PARK

CYPRUS LAKE PROVINCIAL PARK

1E

1S

THE WIARTON ECHO, WIARTON, ONT. THURSDAY OCTOBER 8TH. 1964.

STORM DATE. ABOUT 7:30 P.M., MON. OCT. 5TH. 1964.

FREAK STORM DESTROYS BARN ROOF.

The circular shaped steel-roof of the large barn at BERT MUNN'S farm in the TOBERMORY SETTLEMENT district, was blown completely off Monday night, by a freak wind and hail storm. The roof, twisted and broken, was scattered all over the yard. Two chimneys of the farm house over 200 feet away were damaged when struck by pieces of the roof. The hay in the barn was not disturbed.

As there was lightning and thunder at the time of the incident, as a precaution the fire brigade was called, but no fire occurred.

FURTHER INFORMATION OBTAINED OCT 23RD. 1979. FROM:

MRS. BERT MUNN. Was away when the tornado struck. Returned about 7:30 p.m. to find the barn unroofed. On entering the house a bad, old, dusty smell was detected. All kitchen cupboard doors were open and the toilet bowl was without water.

2x4's were found driven into the ground.

The tornado appeared to end in a swamp across the road a few hundred feet away.

MR. HARRY HOPKINS. (Lighthouse keeper at CABOT HEAD and friend of the MUNNS') He said the tornado came from LAKE HURON and cut a swath through the bush, 40 yards wide and half a mile, long, before striking MUNN'S farm.

He also said he had never seen a waterspout at CABOT HEAD in his 28 years service there. He did, however, see one on the LAKE HURON side about six years ago. And, he added, "all weather phenomena occurs on the LAKE HURON side."

DAILY WEATHER MAP

U. S. DEPARTMENT OF COMMERCE

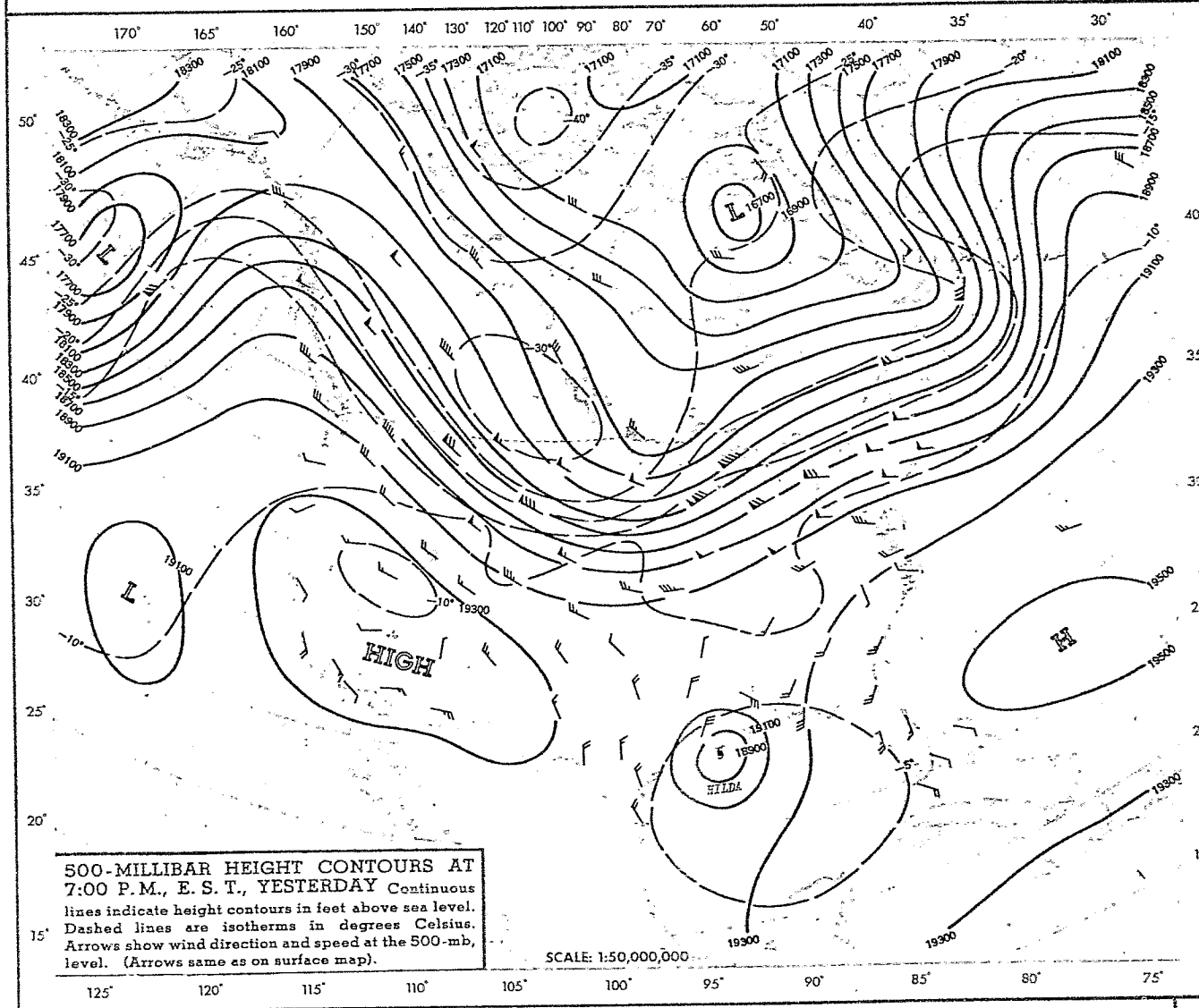
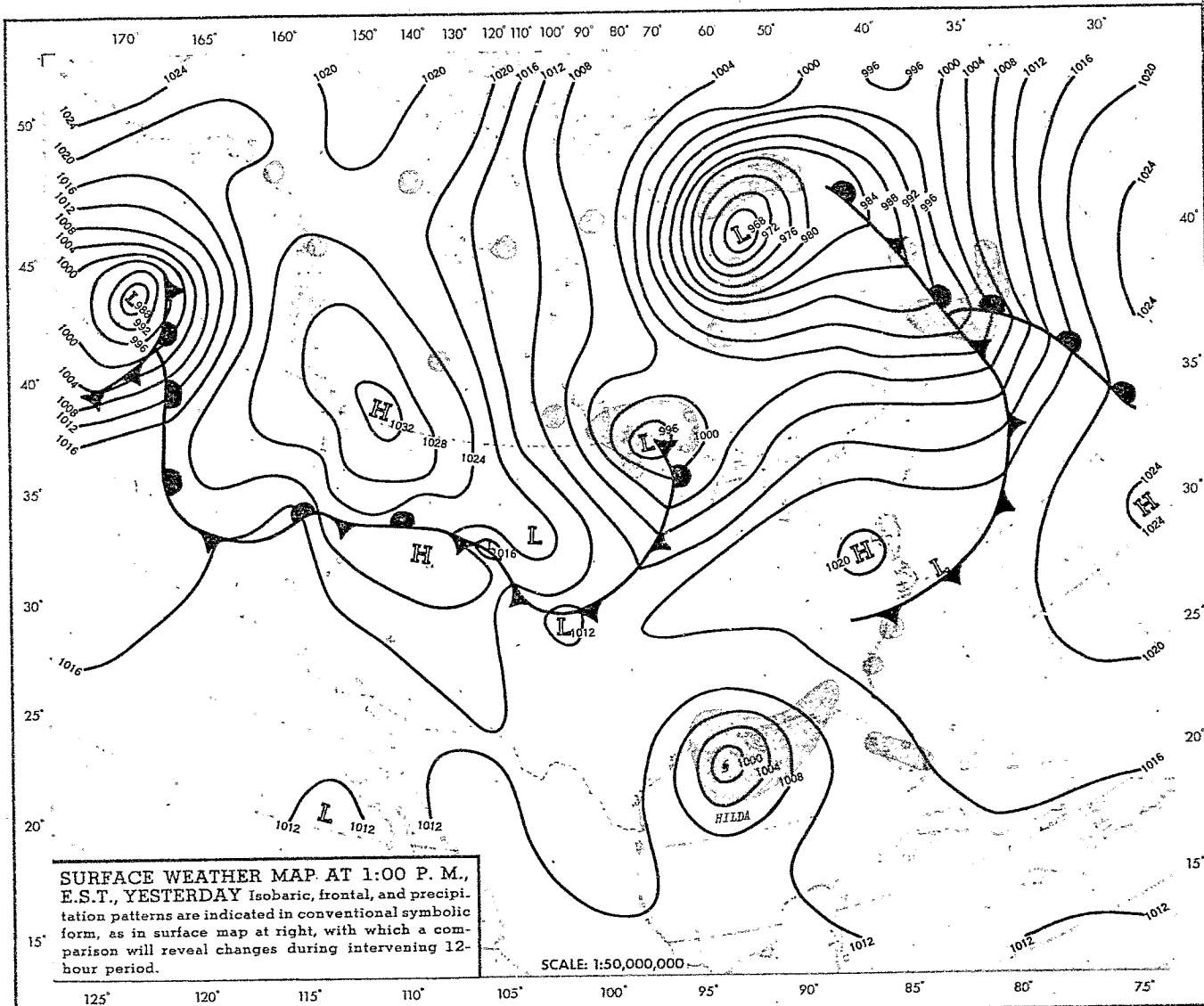
LUTHER H. HODGES, Secretary

WEATHER BUREAU

ROBERT M. WHITE, Chief

SUNDAY, OCTOBER 4, 1964

Maps prepared by National Meteorological Center, Washington, D. C.



SUN
AN

- Wind speed to 25 mile/hour
- Direction of (From the west)
- Temperature degrees Fahrenheit
- Total amount clouds (5k) partly over
- Visibility miles
- Present weather Continuous snow in flake
- Dewpoint degrees Fahrenheit
- Cloud type Acrostratus fractocumulus
- Height of base 1300 feet

DAILY WEATHER MAP

U. S. DEPARTMENT OF COMMERCE

LUTHER H. HODGES, Secretary

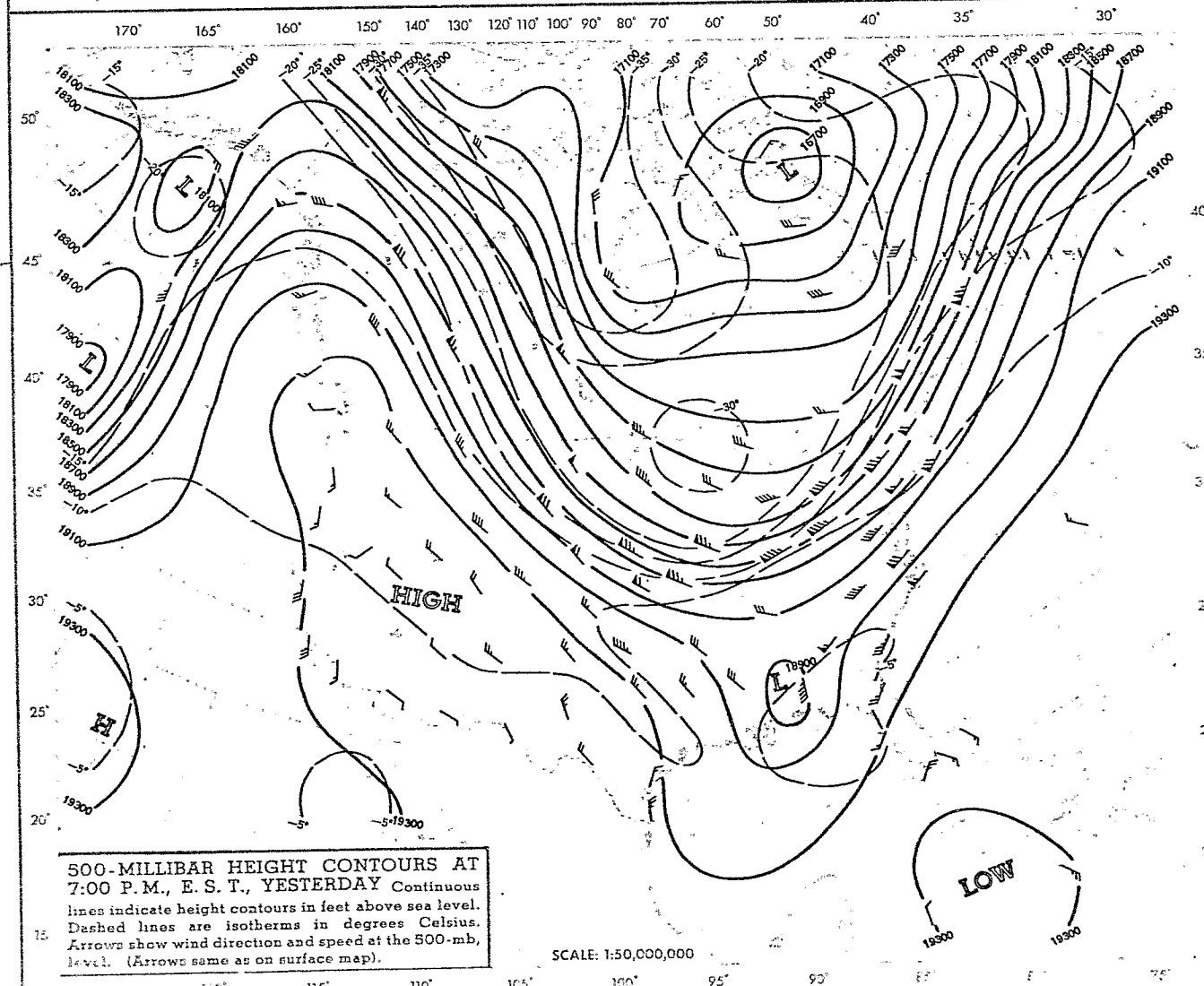
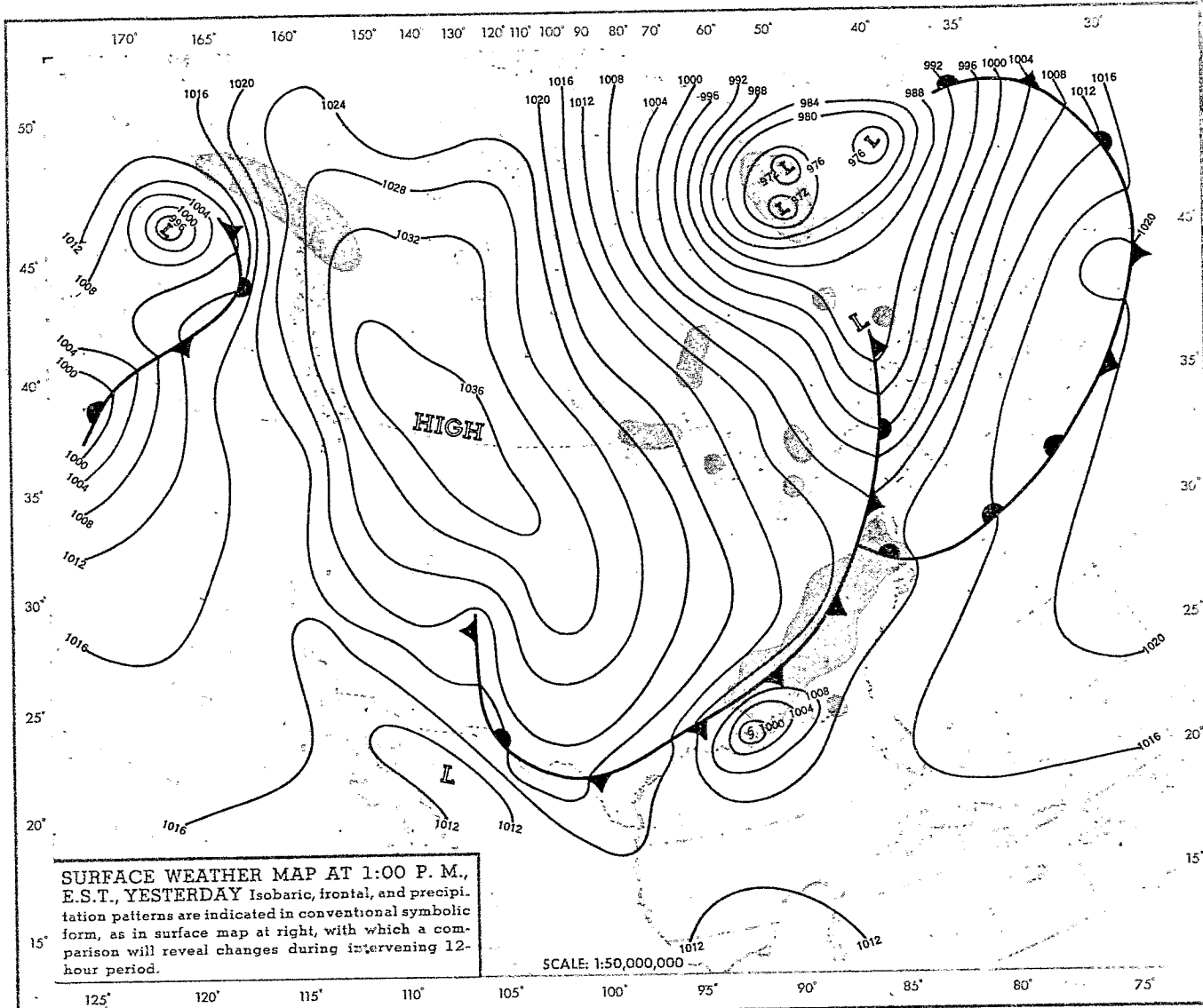
WEATHER BUREAU

ROBERT M. WHITE, Chief

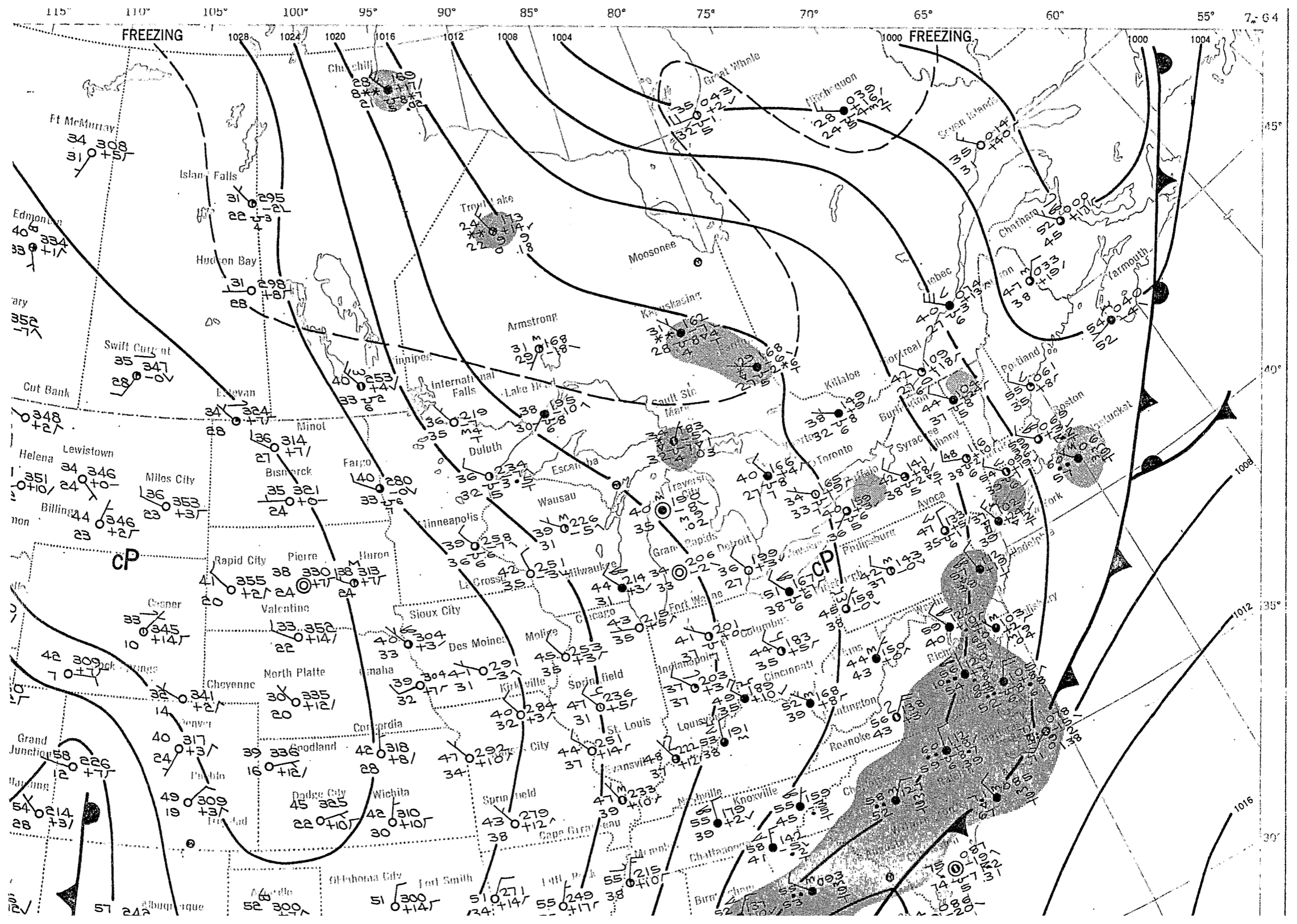


MONDAY, OCTOBER 5, 1964

Maps prepared by National Meteorological Center, Washington, D. C.



OCT 5 /64
1AM. EST



DAILY WEATHER MAP

U. S. DEPARTMENT OF COMMERCE

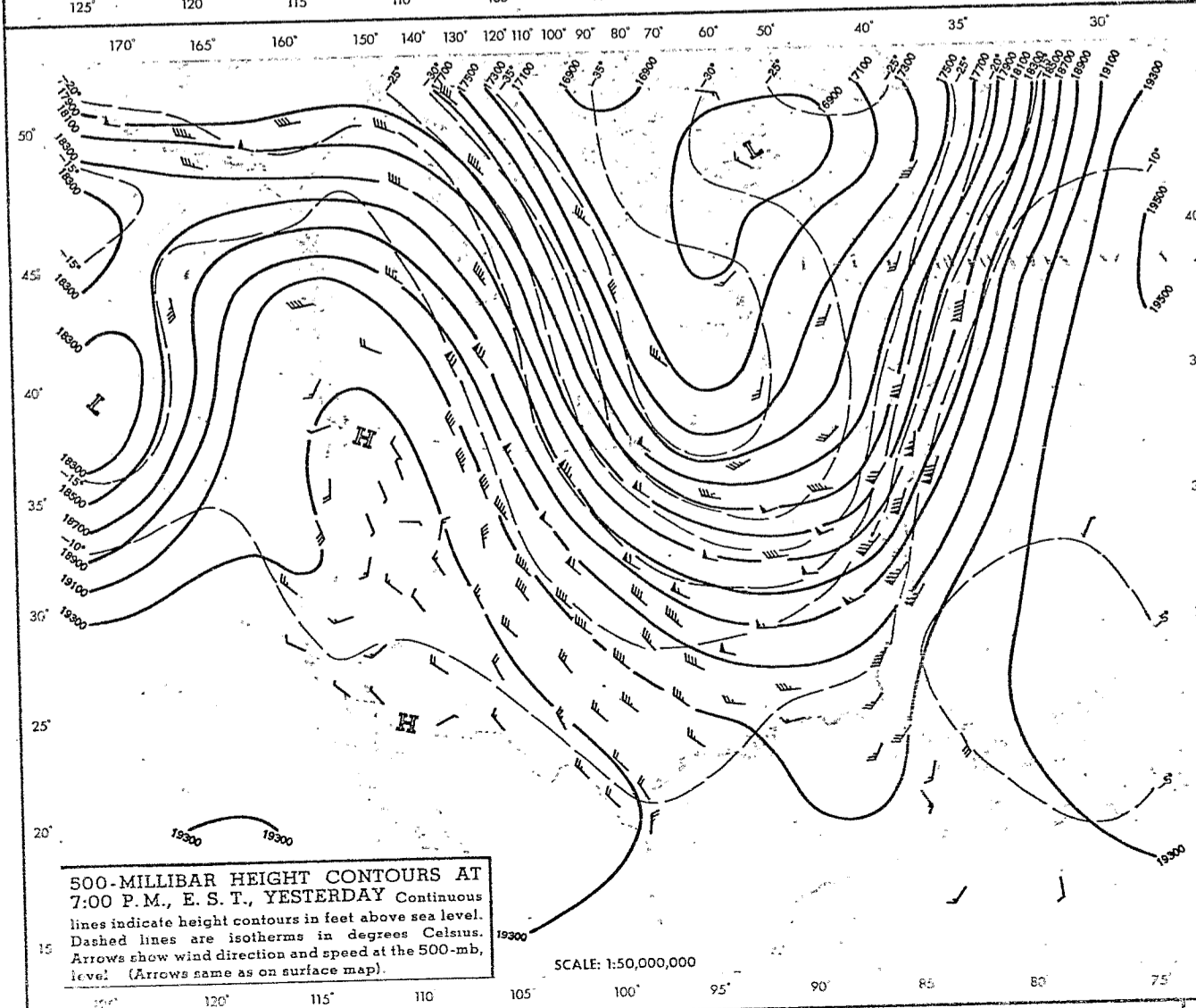
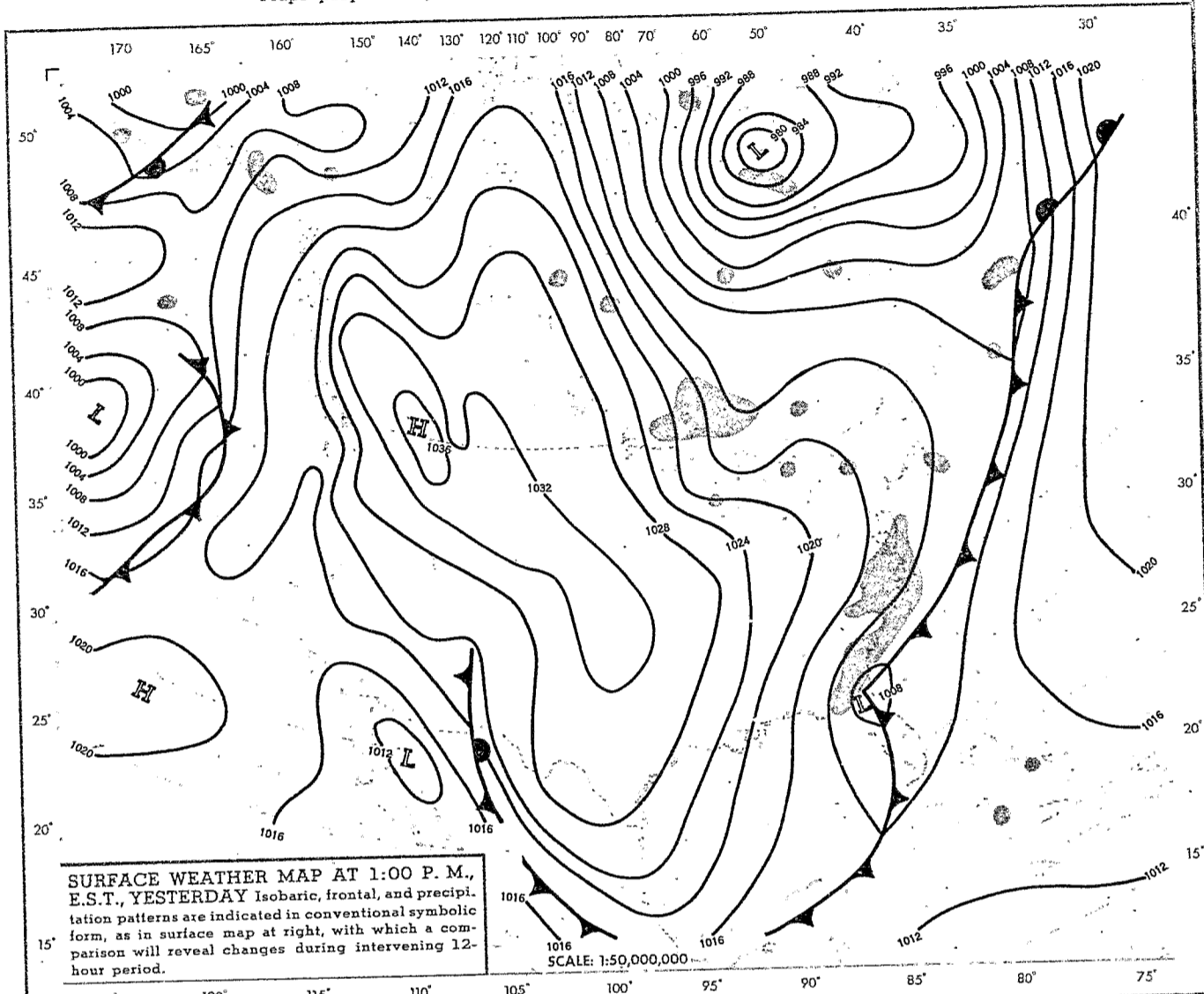
LUTHER H. HODGES, Secretary

WEATHER BUREAU

ROBERT M. WHITE, Chief

TUESDAY, OCTOBER 6, 1964

Maps prepared by National Meteorological Center, Washington, D. C.



SUR AN

- Wind speed to 25 miles hour
- Direction of (From the west)
- Temperature degrees Fahren
- Total amount clouds (Sky pretty covers)
- Visibility miles
- Present weather (Continuous snow in flakes)
- Dewpoint in degrees Fahren
- Cloud type (stratus, altostratus, cirrostratus)
- Height of base 1500 feet

