

Summary Sheet

IDTO - ID Number :693401  
 AUTH - Report Author :  
 TYFU - Tornado Type & Fuji Code :a2  
 TITL - Report Title or Location :Guthrie  
 PROV - Province :Ontario  
 COUN - Counties :Simcoe  
 REFS - References :Barrie Northern  
 Advance August 16, 1934 The Story of Oro, Guthrie 1972 by  
 Township Historical Committee, The Globe August 14, 1934  
 ZOTO - Touchdown Zone Number & Easting :17615300  
 NOTO - Touchdown Northing :4925190  
 LOVA - Touchdown Error Value & Code :100o  
 DADA - Date of Data Entry :26/06/1990  
 ZOLO - Liftoff Zone Number & Easting :  
 NOLO - Liftoff Northing :  
 UPVA - Liftoff Error Value & Code :  
 DEAD - Number of Fatalities :  
 HURT - Number of People Injured :  
 HERT - Injuries Code :  
 DATA - Date of Tornado :13/08/1934  
 DAVA - Date Error Value & Code :  
 TITO - Time of Tornado :1500  
 TIMR - Time Meridian :75  
 TIVA - Time Error Value & Code :30c  
 AXDA - Maximum Path Width :91  
 AXVA - Max. Path Width Error & Code :5c  
 AVDA - Average Damage Width :  
 AVVA - Avg. Damage Width Error & Code :  
 SADA - Sample Damage Width :  
 SAVA - Sample Damage Width Error & Code :  
 INTO - Initials :JAM  
 DFTO - Detailed Report Flag :n  
 JUNK - PRDA & DIMO & DALE :  
 CODA - Property Damage Code :  
 MISC - ORDE,PICS\_TYPE,PICS\_AVAIL,COCO : 112  
 MANY - Multiple Event Flag :n

MEMO:Barns unroofed and demolished, skating rink constructed of wooden beams and tin was blown all over, chimney blown off church, trees uprooted and broken. Witnesses said the clouds were a greenish colour just before the tornado struck.

PHEN - Associated Phenomena :P  
 TSHP - Townships :Oro

JAM, 26/06/1990

A

## TORNADO PROJECT SUMMARY SHEET

F=1

693401ONT

1.	DATE AND TIME	13.8.1934	AFTERNOON
2.	LOCATION OR PATH (attach map)	GUTHRIE	0934-01
3.	PATH LENGTH	<input type="checkbox"/> NOT KNOWN <input type="checkbox"/> <1mi; <input checked="" type="checkbox"/> 1-4mi; <input type="checkbox"/> 5-10mi; <input type="checkbox"/> 11-50mi; <input type="checkbox"/> LENGTH IF >50mi	
4.	PATH WIDTH	100 YDS	5. TORNADO PART OF SQUALL LINE? <input type="checkbox"/> YES; <input type="checkbox"/> NO; <input checked="" type="checkbox"/> UNKNOWN:
6.	ANY UNUSUAL COLORATION?	<input type="checkbox"/> YES; <input type="checkbox"/> NO; <input checked="" type="checkbox"/> UNKNOWN	
7.	ANY UNUSUAL SOUND?	<input type="checkbox"/> YES; <input type="checkbox"/> NO; <input checked="" type="checkbox"/> UNKNOWN	
8.	IF ANSWER TO 6 OR 7 YES, ELABORATE;		
9.	LIST ANY ASSOCIATED PHENOMENA (Such as hail, vivid lightning heavy rain, no rain, etc.)		
10.	TOTAL DAMAGE ESTIMATE	\$ UNKNOWN	11. TOTAL DEATHS NONE
12.	TOTAL INJURED	NONE	13. TOTAL HOMELESS
14.	LIST ALL REFERENCES  NORTHERN ADVANCE, BARRIE. AUG 16 1934 THE STORY OF ORO, GUTHRIE 1972. TOWNSHIP HISTORICAL COMMITTEE.		
15.	SUMMARIZE REMARKS PERTAINING TO (a) FUNNEL; (b) INTERESTING OR CAPRICIOUS EVENTS.  (a) A FUNNEL SHAPED CLOUD ROARED OUT OF A SUMMER STORM.  (b) TREES AND TELEPHONE POLES FLATTENED, BARNs EITHER DEMOLISHED OR UNROOFED. THE GUTHRIE SKATING RINK MADE OF HEAVY BEAMED ARCHES AND STEEL WAS SCATTERED OVER THE COUNTRYSIDE AND EMBEDDED IN TREE TRUNKS. THE CONCRETE ABUTMENTS AT THE WEST END, SOME 3 FT IN DIAMETER WERE PULLED UP AND THROWN 10 FT AWAY.		



80° 79°

81° 80° To Cleveland To Jamestown To Jamestown 79° To Salamanca To Salamanca



LAKE ERIE

Erie

Vertical text on the right edge of the map, possibly a page number or reference code.

and a Refreshment Outlet. On the  
el, Garage, Service Station and  
Simon, in 1954. On the north west  
location is the Sales Outlet for the

west side of line 2, at lot 13 and 14,  
ed the Shanty Bay Golf Course. In  
velop this piece of wild land, into  
ys, and it was officially opened in  
ss the road, part of lots 18 and 19,

tion and Entertainment Farm, is  
sters to banquets, weddings, sleigh  
after the T.V. series of the same

ntario, placed a marker saying the  
r more, nine farms qualified, in the

the Oro Telephone, as early as 1909,  
pany was sold to Bell in 1962, and

was the Delco Systems. It was in-  
f lot 16, conc. 6, in early 1920's. In  
d later in the garage and homes of  
Hydro, came from Shanty Bay, to  
y power and hydro).

west half of lot 20, conc. 5, about  
s. It was used to pick up the beam  
elay it to the tower on east half of

ot known, but it ceased 1930. The  
of lot 19, conc. 5, and was blown  
era in the community.

of the churches, hall, rink, garage  
e question of Fire Protection was  
ng, Nov. 1951. A Committee was  
ction equipment. The Guthrie Fire  
farm was supposed to pay was  
ounted on a second hand jeep, was  
with Vern Hawkins as fire chief in  
by the Township in 1971, and in  
d the area so well, was no longer

Early Organizations — Sons of Temperance, were organized in 1896 and built a hall on north east corner lot 21, conc. 6. This group gradually faded out and the hall was torn down.

Christian Endeavour Society, a church young peoples group, was first founded in 1894 and has been replaced by various groups since.

The Ladies Aid and Mission Band were organized in connection with the church in 1894. While both churches still have active organizations, the Presbyterian being known as the Ladies Aid, the United Church name was changed to Womens' Federation in 1959 and in January 1962 became known as The United Church Women.

The Womens' Institute, was founded in November 1913, with 28 charter members and has been very active in the community over the nearly 60 years, since. They have been very active with the work of the Community Hall for many years, and also with the Tweedsmuir history work.

The Farmers' Institute had a branch in Guthrie, around 1912 to 1918, when the United Farmers of Ontario took over.

Thomas E. Ross, a son of former Oro reeve James Ross, was very active in these groups, and was elected from this area to the federal parliament as a progressive member in 1921 where he served for four years. The large brick home on the corner of highway 11 and line five was the Ross home.

Later about 1940, The Federation of Agriculture was formed and like the former organization, helped the farmers, by improved method of farming and bulk purchases of feed and supplies, but disbanded in 1952 with some farmers now being individual service members of the Federation.

Cyclone — Monday, August 13, 1934, a funnel shaped cloud, roared out of a summer storm and descended on Guthrie. First, tearing the roof off Henry McCuaig's barn, east half of lot 19, conc. 3, flattening trees and telephone poles in its path. The next strike was John A. Campbell's barn, west half of lot 19, conc. 5, demolishing it so badly, a new barn had to be constructed above the cement work. It left the United Church and Scotts' Garage, without too much damage, although the church sheds didn't fare as well, and one chimney was blown off the church. The rink was picked up into the air, great heavy beamed arches and steel, and what wasn't scattered over the countryside or embedded in tree trunks, was a pile of rubble. As the giant wind crossed the highway, it snatched up Alex Campbell's barn, west half of lot 21, conc. 5, leaving it in the same condition as the rink, still not all its strength spent, it tore part of the roof off James Stoddart's barn, west half of lot 22, conc. 5. Fortunately, no one was injured and the barns were rebuilt by their owners, that fall, with the help of labour from the community and surrounding district. The ladies provided meals for the barn raisings, in the church basement.

Airport — In 1967, Barrie purchased approximately 76 acres of Oro land for an airport on west half of lot 22, conc. 4, east half of lot 23, conc. 4, and west half of lot 23, conc. 4, with three right of ways, two to the west, one to

BARRIE. NORTHERN ADVANCE.

THURSDAY 16TH AUGUST 1934

CYCLONE TWISTER WRECKS GUTHRIE RINK AND BARN.

SWEEPS HUNDRED-YARD WIDE STRIP ACROSS HIGHWAY; DAMAGE HEAVY.

DURING the storm on Monday afternoon a cyclone of intense force struck the GUTHRIE district, on highway 11, ten miles north of BARRIE. Two barns were demolished, the roofs blown off two other barns, the Guthrie skating rink picked up and scattered to the winds, the United Church ~~damaged~~ shed damaged, the chimney blown off the church, trees and telephone poles broken and crops in the wake of the twister scattered about.

The cyclone struck west of the highway, taking the roof off HENRY McCUAIG'S barn and carrying it over half a mile. ALEX. CAMPBELL'S fine barn was ripped to pieces, only some of the upright-posts remaining. The skating rink, a substantial frame structure ~~with~~ with metal covering, was picked up, the metal ripped and scattered about, pieces being wrapped around trees like paper. The concrete abutments at the west end, some three feet in diameter, were pulled up and are lying ten feet away. The United Church shed close by was wrecked and a passing motorist who took refuge there during the storm had a narrow escape, the roof collapsing on top of his car. The chimney on the church was blown down and it fell on the roof, making a large hole, the bricks going through onto the pews. Crossing the highway, the cyclone hit JOHN A CAMPBELL'S big barn, demolishing it. Continuing on, the roof of JAS. STODDART'S barn was blown off.

The cyclone apparently was not more than 100 yards wide and the damage continued for about a mile from where it started. Trees and telephone poles on the highway were broken and lay strewn on the road. Motorists passing took refuge in sheds and various places and several had narrow escapes. Mrs. WALKER CALDWELL'S tea room, where several took refuge, was badly shaken, and cabins nearby were blown over. A stone in the cemetery was split and knocked over. The roof of the barn on TOM GUTHRIE'S farm on the CAMPBELL LINE was slightly damaged.

Mr. SCOTT, who has a garage beside the rink, fully expected to see his building go and said he would have liked to see a hole in the ground where he could have hid at the ~~time~~ time. It did not last more than a couple of minutes, he said. Police officers from ORILLIA and BARRIE were soon on the scene and the roads cleared for traffic.

The damage caused in a few minutes will run into thousands of dollars, with no insurance. Mr. ALEX CAMPBELL whose barn was destroyed said the cyclone would put him back where he was when he started for himself. The skating rink was a community undertaking and it was expected to have it clear of debt this coming winter.

THE GLOBE, TORONTO, TUESDAY AUGUST 14TH, 1934.

STORM DATE. 4 P.M., MON. AUG. 13TH, 1934.

RIOT OF DESTRUCTION AS CYCLONE SWEEPS ONTARIO COUNTRYSIDE.

DAMAGE ESTIMATED AT THOUSANDS OF DOLLARS IS REPORTED IN BARRIE AREA AND  
IN DEREHAM TOWNSHIP.. HOUSES AND BARNS ARE WRECKED AND LIVESTOCK KILLED.

TOBACCO CROPS BADLY DAMAGED.

(Special and C.P. Despatches)

BARRIE, AUG. 13. A cyclonic-like storm which lasted for approximately three minutes, crossed No. 11 HIGHWAY at GUTHRIE, seven miles north of BARRIE, at 4 p.m. today, and in its 200 yard swath buildings crashed and branches were ripped from trees. Damage to property was estimated in thousands of dollars, but fortunately no loss of life resulted.

The barn of ALEX CAMPBELL, in ORO TOWNSHIP, fell prey to the big wind, and the large structure which stabled several horses was flattened to the ground with no loss of life. MR. CAMPBELL was in the barn at the time of the crash and forced an exit by smashing through a door which was jammed. MR. CAMPBELL last night estimated his loss at \$7,000.

The SKATING RINK in GUTHRIE, a corrugated-iron building was literally squashed by the force of the gale. Sheets of corrugated metal were tossed through the air, and many came to rest wrapped about trunks of trees. Limbs were ripped from trees, and telephone and telegraph communication lines were broken at many points.

As trees tumbled across the roads, motorists were forced to take refuge in buildings along the highways. The roadside tearoom of WALKER CALDWELL, where motorists fled, was shaken by the wind, and for a time occupants feared it would be carried away by the terrific blasts.

CURLING RINK DESTROYED.

The cyclone crashed the GUTHRIE CURLING RINK completely to the ground. The rink, made of metal, was completely wrecked, with pieces of tin carried half a mile. Barns of ALEX and JOHN A. CAMPBELL nearby, were levelled, and the roofs of barns on JAMES STODDART'S and HENRY McCUAIG'S farms were carried away.

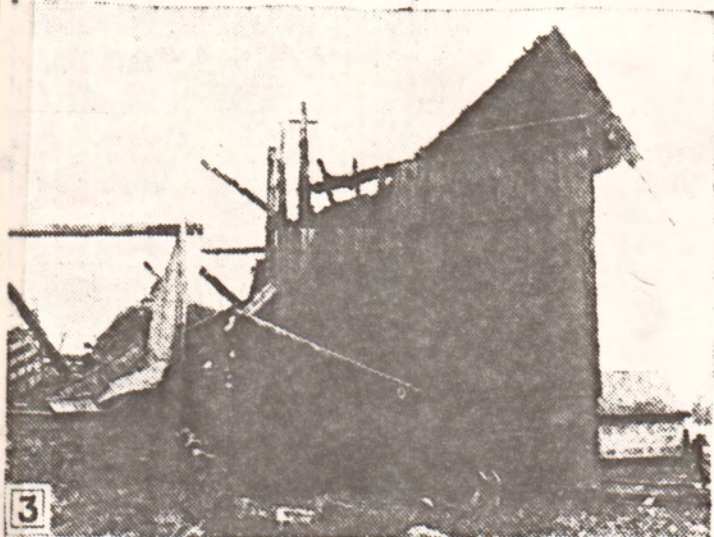
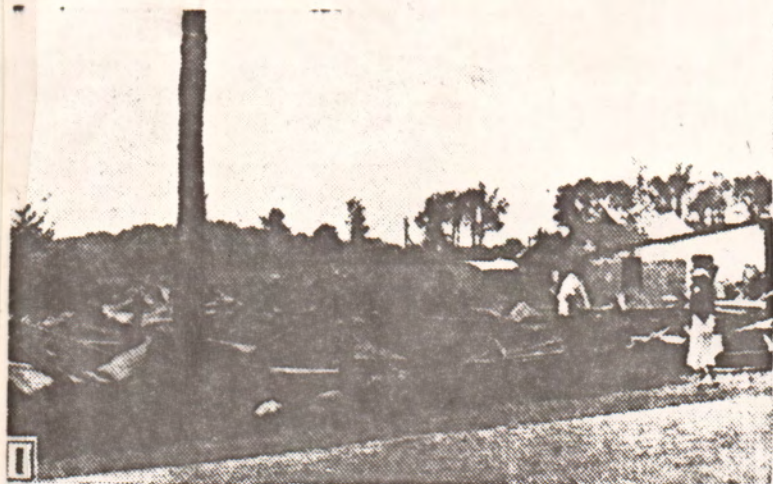
The McCUAIG barn roof was lifted for a mile, and the chimney on the GUTHRIE PRESBYTERIAN CHURCH, was knocked down, plunging through the roof, and causing a large gaping hole. In an adjacent cemetery the wind upturned a tombstone.

A driving shed was razed, a tourist cabin knocked over and telephone and telegraph wires torn down.

Greenish clouds appeared in the northwest sky just before the fury of the storm broke, spectators said. The cyclone appeared in a funnel-shape, cutting a narrow swath of about 100 yards across the countryside, carrying before it grain stooks. Rain also appeared with the blasts, continuing for a few minutes.

The cyclone seemed to pick up the GUTHRIE RINK, in one piece, then spreading the fragments over the countryside. Pieces of metal were wrapped around trees and others were carried hundreds of yards.

### Havoc Lies in Trail of Sudden Storm



Ripping along a narrow path in rural Ontario, a spectacular cyclone yesterday did heavy damage. Photos taken a half-hour later around Guthrie, Simcoe County, show: 1.—The flattened wreckage

that once was the village rink. 2.—Alex. Campbell's \$7,000 barn, only a fragment of which still stands. 3.—Barn walls crushed in by the wind's force. 4.—Wreckage from the rink hurled into a clump of trees 100 feet distant.

HEAVY DAMAGE IN DEREHAM TOWNSHIP. (TORNADO)

STORM DATE. P.M., MON. AUG. 13TH. 1934.

INGERSOLL, AUG. 13. Wind of cyclonic proportions whipped its way in a streak through DEREHAM TOWNSHIP, this afternoon, raising barns, trees and woods in a riot of destruction.

On the 3RD. CON. of that township the barn of BROCK SNELL was flattened while men were engaged in threshing. The usual number of threshers were in and about the barn, as well as a team of horses. Twisting timbers and scattered boards crashed about them and between them, and as by some miraculous stroke, no one was hurt. The framework of the barn is a complete wreck.

Word came tonight of the destruction of a house and barn on the farm of JAMES WILLIAMS, but this could not be verified at time of writing. Three cows were killed on the farm of JAMES BANBURY, and a good portion of his woods is said to be down.

The roof was torn from the barn of JOHN WELT, also on the 3RD. CON. of DEREHAM.

In INGERSOLL, hail of unprecedented size fell. One man reported finding a stone measuring 6 inches one way and 5 inches another way. On all sides stones up to three or more inches were bouncing from buildings or crashing their way through glass, as was the case at JAMES BAXTER'S greenhouses, just outside INGERSOLL to the north. Here, between 400 and 500 panes of glass were broken. Exceptionally heavy showers, with thunder and lightning accompanied the hail.

TOBACCO CROPS SERIOUSLY DAMAGED.

HAIL

STORM DATE. P.M., MON. AUG. 13TH. 1934.

DELHI, AUG. 13. A hail storm swept through this district today, destroying tobacco crops, and causing other damage. It was estimated by tobacco buyers 1,000 to 1,200 acres are completely destroyed, and from 800 to 1,000 acres partially destroyed.

The storm was described as the most devastating in years. The sweep of the hail was about a mile wide and twelve miles in length. Greatest loss was suffered in the NORWICH and OTTERVILLE areas and around TEETERVILLE.

With an estimate of from 900 to 1,000 pounds an acre, total loss to tobacco growers will be great. Many of them did not carry hail insurance this year, and their crops have not yet been sold.

Previous storm that could be compared with today's storm for destructiveness occurred AUG. 18TH. 1930.

TEETERVILLE and NORWICH tobacco crops this year were reported to



be exceptionally good and growers were hopeful of a fair return for the season's operations. Samples of leaves brought in today, following the storm, were completely riddled by the hail and of no value whatever.

HAIL

HAIL AT ELMIRA.

STORM DATE. MON. AUG. 13TH. 1934.

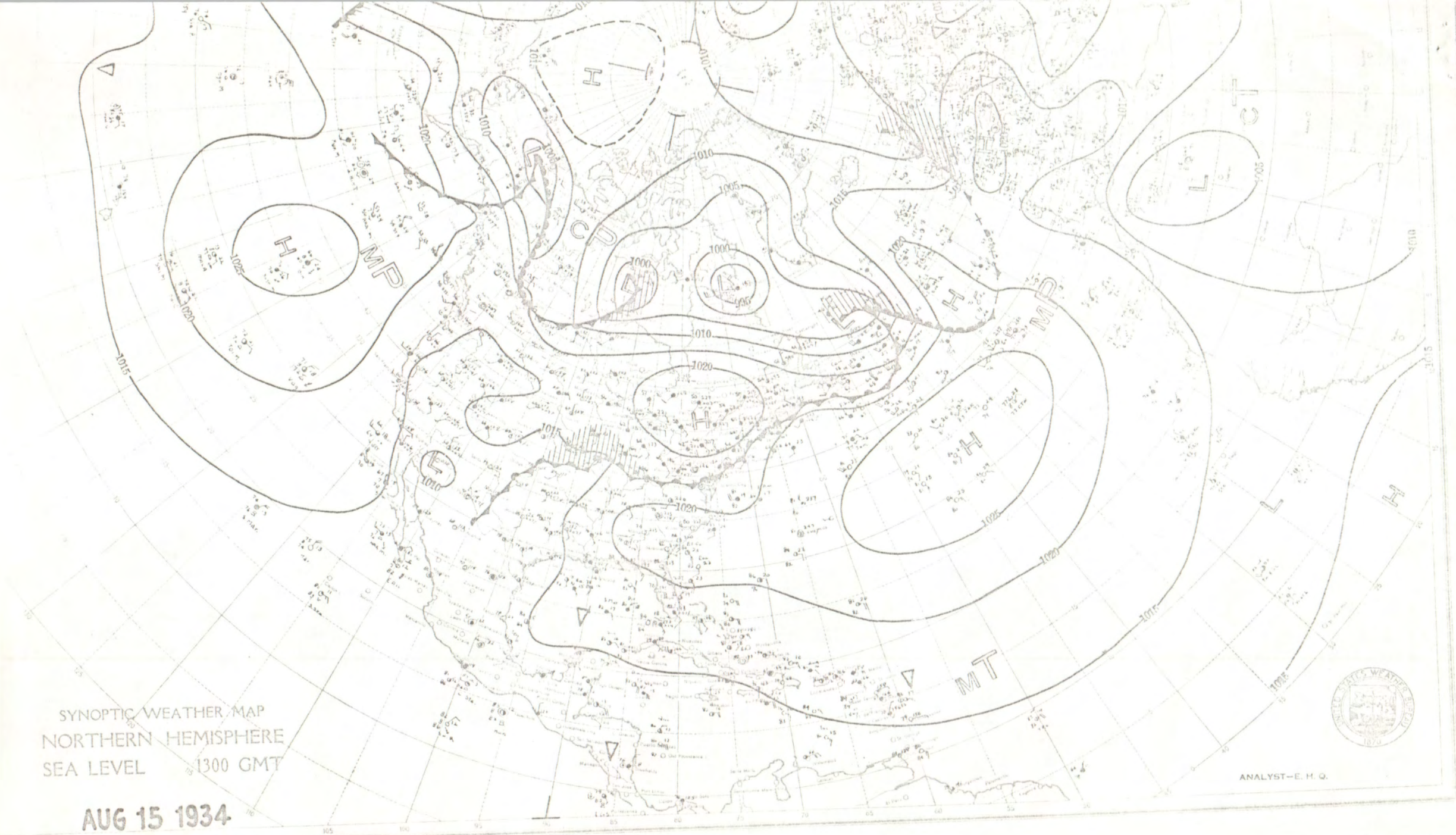
KITCHENER, AUG. 13. A severe hail storm swept over this locality today, centering in the town of ELMIRA. No damage has been reported as yet, but it is thought standing crops may have been injured.

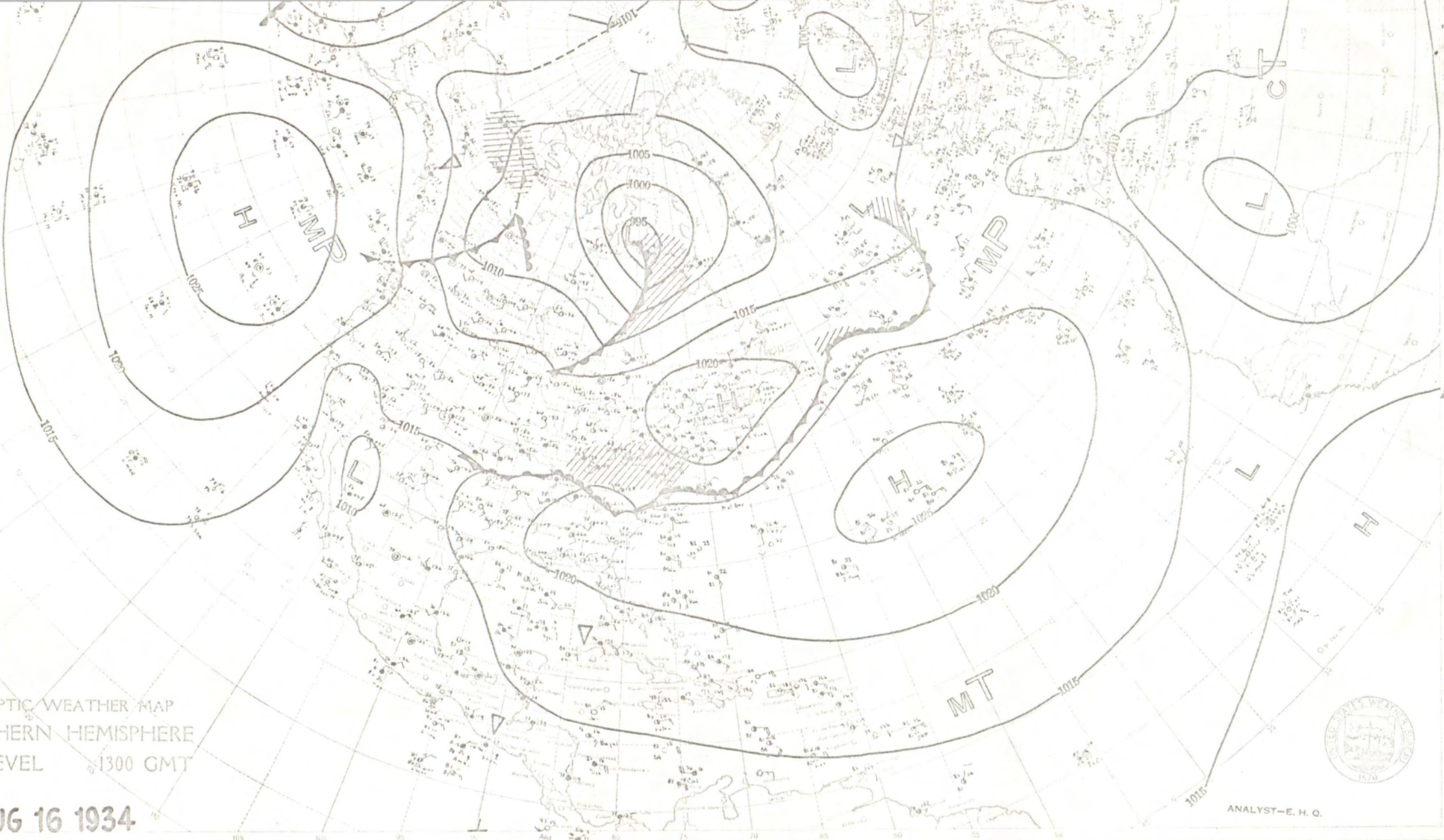
SYNOPTIC WEATHER MAP  
NORTHERN HEMISPHERE  
SEA LEVEL 1300 GMT

AUG 15 1934



ANALYST—E. H. Q.





SYNOPTIC WEATHER MAP  
NORTHERN HEMISPHERE  
SEA LEVEL 1300 GMT

**AUG 16 1934**



ANALYST—E. H. O.



SYNOPTIC WEATHER MAP  
NORTHERN HEMISPHERE  
SEA LEVEL 1300 GMT

AUG 17 1934

ANALYST-E. H. Q.

