

Summary Sheet

IDTO - ID Number :692706  
 AUTH - Report Author :  
 TYFU - Tornado Type & Fuji Code :b2  
 TITL - Report Title or Location :Chesley  
 PROV - Province :Ontario  
 COUN - Counties :Bruce  
 REFS - References :Elderslie  
 ZOTO - Touchdown Zone Number & Easting :17492400  
 NOTO - Touchdown Northing :4904100  
 LOVA - Touchdown Error Value & Code :400o  
 DADA - Date of Data Entry :23/07/1990  
 ZOLO - Liftoff Zone Number & Easting :  
 NOLO - Liftoff Northing :  
 UPVA - Liftoff Error Value & Code :  
 DEAD - Number of Fatalities :  
 HURT - Number of People Injured :  
 HERT - Injuries Code :  
 DATA - Date of Tornado :19/04/1927  
 DAVA - Date Error Value & Code :  
 TITO - Time of Tornado :2130  
 TIMR - Time Meridian :75  
 TIVA - Time Error Value & Code :30c  
 AXDA - Maximum Path Width :  
 AXVA - Max. Path Width Error & Code :  
 AVDA - Average Damage Width :  
 AVVA - Avg. Damage Width Error & Code :  
 SADA - Sample Damage Width :  
 SAVA - Sample Damage Width Error & Code :  
 INTO - Initials :JAM  
 DFTO - Detailed Report Flag :n  
 JUNK - PRDA & DIMO & DALE :  
 CODA - Property Damage Code :  
 MISC - ORDE,PICS\_TYPE,PICS\_AVAIL,COCO : 2  
 MANY - Multiple Event Flag :y

MEMO:Roof and part of wall torn from furniture factory. Barns and other farm buildings damaged or destroyed. Railway freight sheds demolished.

PHEN - Associated Phenomena :  
 TSHP - Townships :Elderslie

JAM, 23/07/1990

# CHESELEY WORST HIT BY VIOLENT WINDSTORM

## C.N.R. Sheds Smashed And Roofs of Several Buildings Torn Off

692706

In Owen Sound Greatest Damage Done to Cutbush's Greenhouse

### VERY HEAVY RAIN

Twister Also Hit in Sydenham in the Silcote Vicinity

It was almost inevitable that there should be some reaction in weather conditions following the exceedingly warm days on Sunday, Monday and Tuesday, it being particularly hot and humid on Tuesday, the result being that a very sudden and terrific wind and rain storm broke over the city and district, and while it was a welcome relief from the heat of the day, considerable damage is reported to have been done.

The wind storm was not quite so bad right in the city as it was outside where it could get a full sweep and those who happened to be out in it are not anxious to have their experience repeated. Several motorists who were on the road state that it was with difficulty they managed to keep their cars to the road for a short time so strong was the wind, while the rain beat so fiercely against the wind ~~and~~ that it was impossible to see where they were going, and in a number of instances drivers pulled up alongside the road until the worst of the storm was over. The wind, which was from the south, was not a cold one, but after it had passed it was evident that the heat wave was over, as the atmosphere was considerably cooler, and on Wednesday morning, while the sun was shining brilliantly, the wind had shifted to the west, and overcoats were again in order, and citizens who had permitted their furnaces to go out had to get them started again.

The storm broke quite suddenly over the city, and there was a great scurrying for cover by those who happened to be out on the streets at the time. The theatres were fairly well filled, and as it was raining hard when the early shows were over a great many who had no umbrellas simply had to wait until the rain was over or take a taxi home. The taxis reaped a harvest for a short time. On second avenue east the rain swept northward in sheets and it was next to impossible to face it. So far as can be ascertained there was no damage done in the business section of the city with the exception of a few business signs being loosened.

Damage amounting to several hundreds of dollars was done to the greenhouses of C. Cutbush & Son on the shore road, just north of the city, by the wind and rain. It was between 8 and 9 o'clock that the storm broke, and in a very short time the creaking of glass told Mr. Cutbush that the wind was playing havoc with his greenhouse. After the worst was over an investigation revealed the fact that somewhere between 500 and 600 panes of glass had been broken in the top of the large greenhouse, and in consequence of this a large number of flowers

were damaged. There were fifty hanging baskets in this greenhouse, and these were all blown down and more or less damaged, some of them being a total loss. So terrific was the force of the wind that the main support of the greenhouse was blown out of the ground. A large truck belonging to Mr. Cutbush, which had been left standing outside was pushed a distance of 50 feet by the wind, and when it came to a stop the front wheels were up against a wood pile. No other damage has been reported from that section.

The storm was also quite severe in some of the country districts. In the second concession of Sydenham, near Silcote, a portion of the barn belonging to Mr. Jesse Lipsett was badly damaged, the eastern end being blown down, and part of the roof torn off. The loss was covered by insurance. T. W. Johnson's hen house was destroyed, and two or three garages in that immediate neighborhood suffered to some extent. The wind only lasted about ten minutes in that section, but it was a regular hurricane while it was on, and many of the farmers were afraid their barns and other buildings were going to go. Many trees in the orchards were uprooted.

### Roof of Part of Krug Bros. Factory Blown Into Side Street

#### HEAVY DAMAGE

### Many Houses and Barns in the Vicinity Are Damaged

(Special to The Sun-Times)  
 CHESELEY, Apr. 20—Much damage was done here last night by a wind-storm that struck the town at the south end, entering by the Canadian National Railway Station at 9.30 p. m. The company's freight sheds 25x50 feet was completely demolished, and the contents left exposed to the heavy rain which accompanied the wind. Just beyond the freight shed was the warehouse. The roof of this was carried clean across the street, and deposited on the lawn of the house on the other side. A few feet further a cluster of mountain ash trees, each 12 inches in diameter, was levelled to the ground. The east wing of Krug Bros. Furniture Co. was then visited. A large section of the roof, and top floor of building was blown into strips, and carried 400 feet over the top and across into a side street. The wooden rafters of the roof were lying in all directions. Fragments of the boards were stuck upon trees, and the pipes wrenched from the sprinkler system and fire protection were deposited in the gutter. Further examination by daylight revealed the effect that the damage done was much greater than at first supposed. The street leading to the railway station is blocked by roofs and rafters, and a gang of railway men are busily employed clearing the way and commencing re-con-

struction. At the Krug Factory men are working on a floor open to the sky, repairing the scene of their usual labors. Couches and chairs from the upholstering shop were carried across the yard and deposited on the roof of a neighboring shed, where they were exposed to view this morning.

Many houses and barns in the vicinity are badly damaged. The veranda of Mr. Laus Brown's house only erected last summer lies prone on the surface of the lawn. Mr. John Hatchow's barn, which stands high on the east of the railway station is a mass of ruins. Part of the upper roof only remains in position, kept there by the hay which supports it. No one in Chesley remembers anything like this in the history of the place.

### Meaford Barns Unroofed

(Special to The Sun-Times)

MEAFORD, Apr. 20—A very severe wind and rain storm broke over this district about 10 o'clock last night, uprooting a number of trees, blowing the tops off the automobiles and causing other damage. The roofs of the barns of Mrs. Wm. Findlay and John Clugston, on Nelson street and those of Mrs. Amos Ford and James Anderson, on 15 and 16 Side road were blown down, and carried some distance across the fields, while each also had a number of fruit trees uprooted by the violence of the storm which lasted about 15 minutes. Fortunately no damage was done to the contents of the barns.

### Barn Blown Flat

(Special to The Sun-Times)

CHATSWORTH, Apr. 20—Much damage was done in Sullivan and Holland townships by Tuesday night's storm, particularly to barns and smaller outbuildings. Hugh Collins, of Sullivan township, had his driving shed completely demolished

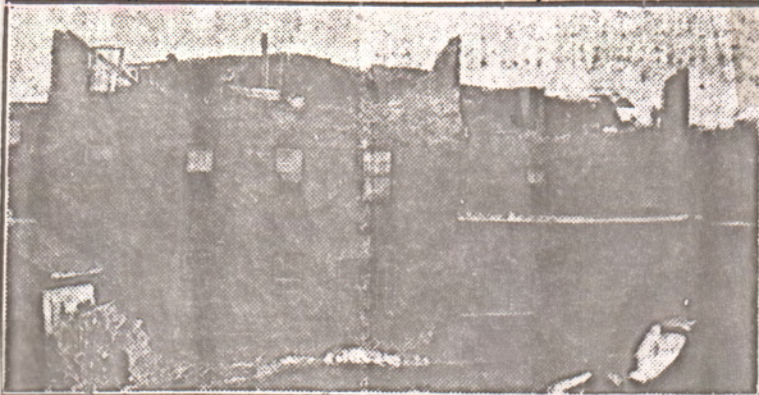
by the wind, and John Nicholson, also of Sullivan, suffered the loss of his barn, it being blown flat to the ground.

In Holland township Joseph Dudgeon had the doors blown off his barn, and the doors of the barn of Nobel Campbell were also torn from their hinges, while Thos. McCauley, who resides just outside of Chatsworth in Holland had both his house and barn damaged. A number of farmers report minor damage to their buildings.

Chesley 17492400  
 4904100  
 400 0  
 Bruce Co.  
 Elderslie Bldg.  
 Meaford 17532600  
 4939100  
 1500 0  
 Grey Co.  
 St. Vincent.

**SUDDEN WINDSTORM BUFFETS CHESLEY**

THE GLOBE. SAT APRIL 30 1927



When a tiny tornado swept through the south end of Chesley last week, buildings were unroofed, wrecked and flattened, large trees uprooted, and other sections of the town sprinkled with a rain of shingles and splintered wood. A large part of the east wing of Krug brothers' furniture factory (shown above) was demolished. One section of pipe from the sprinkler system was carried 500 feet, and punctured a house window. Having finished its urban playfulness, the gale took a whirl in the neighboring countryside, repeating its tactics on barns and driving sheds. One of the shattered barns is shown below.

**FLOODS, STORMS  
TORNADOES TOOK  
TOLL OF HUNDRED**

The Western and Southern States Are Very Badly Hit by Elements

**FEAR FLOODS YET**

Illinois Had 18 Killed; Teacher Saved Children, Is Killed Herself

(Canadian Press Despatch)

KANSAS CITY, Apr. 20 — With the casualty list showing more than a hundred dead, the South and Middle West to-day continued its gamble on the rapidly changing weather reports, in the hope of avoiding further losses in tornadoes, freak storms, and floods.

**Very Heavy Death Toll**

Hundreds of farmers in the western Missouri, southern Kansas, Oklahoma and Arkansas, refused to take chances in their estimates of the arrival of flood crests, and remained away from home inundated several times during the last two weeks. Texas maintained its lead with more than fifty dead and scores injured. Oklahoma was next with an estimate of forty-five killed while several persons were listed as flood victims in Kansas and Missouri.

**18 Dead in Illinois**

(Canadian Press Despatch)

SPRINGFIELD, Ill., Apr. 20—The wrath of a windstorm which slapped at six counties in Central Illinois yesterday, causing eighteen deaths and injuring many more, spared more than sixty school children in two different schools, but cost the life of one teacher as she herded her flock to safety. All the deaths were in villages or on farms.

The Oakland School, near Cornland, was totally demolished, the thirty pupils being found in a nearby field, with only three slightly injured. At Centreville, where the teacher, Miss Anna Keller, 25, warned her students to crouch beneath their desks, as the storm approached, the building collapsed, killing her. The pupils escaped with a few cuts and bruises.

(SEE AUGUST 2ND. 1928)

TORNADO, CHESLEY, ONTARIO.

THE GLOBE, TORONTO, WEDNESDAY APRIL 20TH. 1927.

STORM DATE. ABOUT 9:30 P.M., TUES. APRIL 19TH. 1927.

BUILDINGS WRECKED BY FURIOUS WIND..HAVOC CAUSED IN CHESLEY BY MINIATURE HURRICANE.

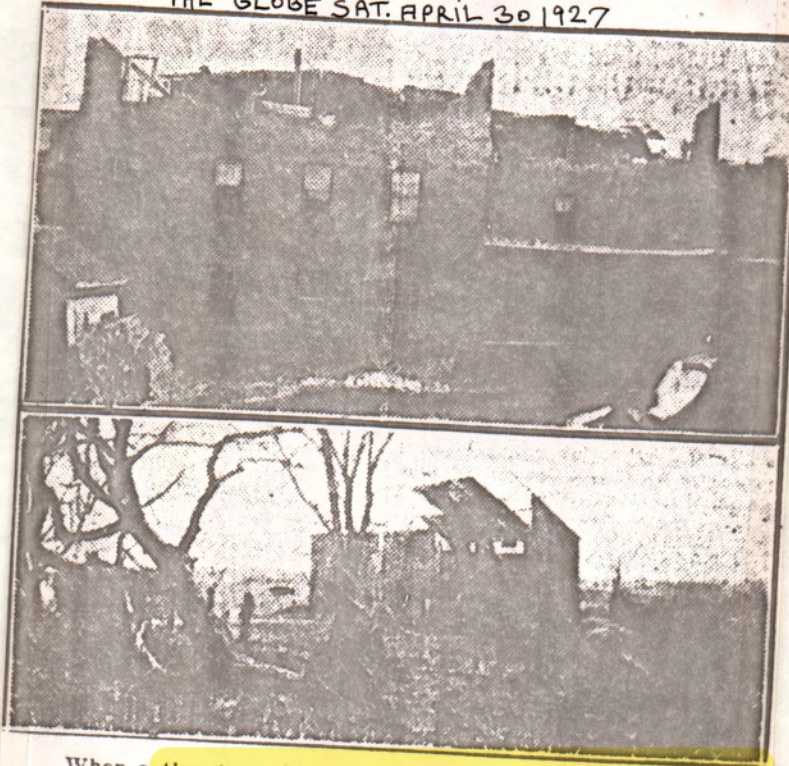
(Special Despatch to The Globe)

CHESLEY, APRIL 19. Buildings were demolished or damaged and trees uprooted when a severe windstorm struck the south end of this town about 9:30 o'clock this evening, following a day of unusual warmth. The C.N.R. FREIGHT SHED was completely demolished, a wagon shed nearby was unroofed and a cluster of trees, each 12 inches in diameter, were uprooted.

A large section of the east wing of KRUG BROS. 'FURNITURE FACTORY was blown into strips and carried over 100 feet over the top of the building and across into a side street. The wooden supports of the roof were left lying in all directions and pipes wrenched from the sprinkler system of fire protection were deposited in the gutter.

**SUDDEN WINDSTORM BUFFETS CHESLEY**

THE GLOBE SAT. APRIL 30 1927



When a tiny tornado swept through the south end of Chesley last week, buildings were unroofed, wrecked and flattened, large trees uprooted, and other sections of the town sprinkled with a rain of shingles and splintered wood. A large part of the east wing of Krug brothers' furniture factory (shown above) was demolished. One section of pipe from the sprinkler system was carried 500 feet, and punctured a house window. Having finished its urban playfulness, the gale took a whirl in the neighboring countryside, repeating its tactics on barns and driving sheds. One of the shattered barns is shown below.