

12-1-2022

**Author Correction: FAM222A encodes a protein which accumulates in plaques in Alzheimer's disease (Nature Communications, (2020), 11, 1, (411), 10.1038/s41467-019-13962-0)**

Tingxiang Yan  
*CASE School of Medicine*

Jingjing Liang  
*Case Western Reserve University*

Ju Gao  
*CASE School of Medicine*

Luwen Wang  
*CASE School of Medicine*

Hisashi Fujioka  
*Case Western Reserve University*

Follow this and additional works at: [https://ir.lib.uwo.ca/neurosci\\_inst\\_pubs](https://ir.lib.uwo.ca/neurosci_inst_pubs)

*See next page for additional authors*

---

**Citation of this paper:**

Yan, Tingxiang; Liang, Jingjing; Gao, Ju; Wang, Luwen; Fujioka, Hisashi; Weiner, Michael W.; Schuff, Norbert; Rosen, Howard J.; Miller, Bruce L.; Perry, David; Aisen, Paul; Toga, Arthur W.; Jimenez, Gustavo; Donohue, Michael; Gessert, Devon; Harless, Kelly; Salazar, Jennifer; Cabrera, Yuliana; Walter, Sarah; Hergesheimer, Lindsey; Toga, Arthur W.; Crawford, Karen; Neu, Scott; Schneider, Lon S.; Pawluczyk, Sonia; Becerra, Mauricio; Teodoro, Liberty; Spann, Bryan M.; Aisen, Paul; Petersen, Ronald; and Finger, Elizabeth, "Author Correction: FAM222A encodes a protein which accumulates in plaques in Alzheimer's disease (Nature Communications, (2020), 11, 1, (411), 10.1038/s41467-019-13962-0)" (2022). *Neuroscience Institute Publications*. 100.

[https://ir.lib.uwo.ca/neurosci\\_inst\\_pubs/100](https://ir.lib.uwo.ca/neurosci_inst_pubs/100)

---


## Authors

Tingxiang Yan, Jingjing Liang, Ju Gao, Luwen Wang, Hisashi Fujioka, Michael W. Weiner, Norbert Schuff, Howard J. Rosen, Bruce L. Miller, David Perry, Paul Aisen, Arthur W. Toga, Gustavo Jimenez, Michael Donohue, Devon Gessert, Kelly Harless, Jennifer Salazar, Yuliana Cabrera, Sarah Walter, Lindsey Hergesheimer, Arthur W. Toga, Karen Crawford, Scott Neu, Lon S. Schneider, Sonia Pawluczyk, Mauricio Becerra, Liberty Teodoro, Bryan M. Spann, Paul Aisen, Ronald Petersen, and Elizabeth Finger

<https://doi.org/10.1038/s41467-022-31711-8>

OPEN

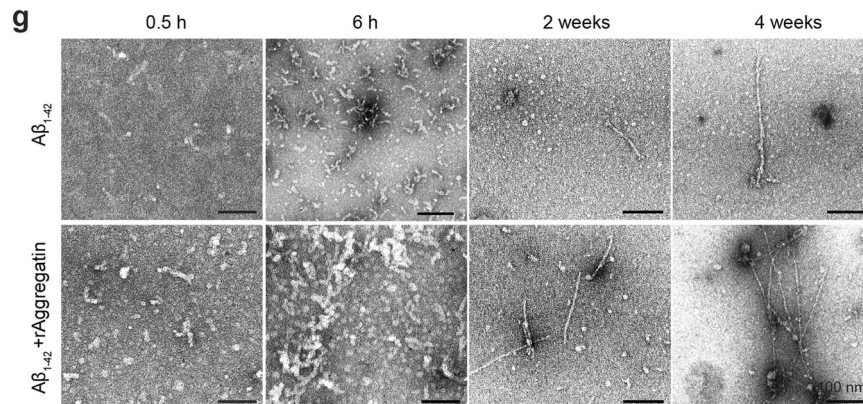
# Author Correction: *FAM222A* encodes a protein which accumulates in plaques in Alzheimer's disease

Tingxiang Yan, Jingjing Liang, Ju Gao , Luwen Wang, Hisashi Fujioka, The Alzheimer Disease Neuroimaging Initiative, Xiaofeng Zhu & Xinglong Wang

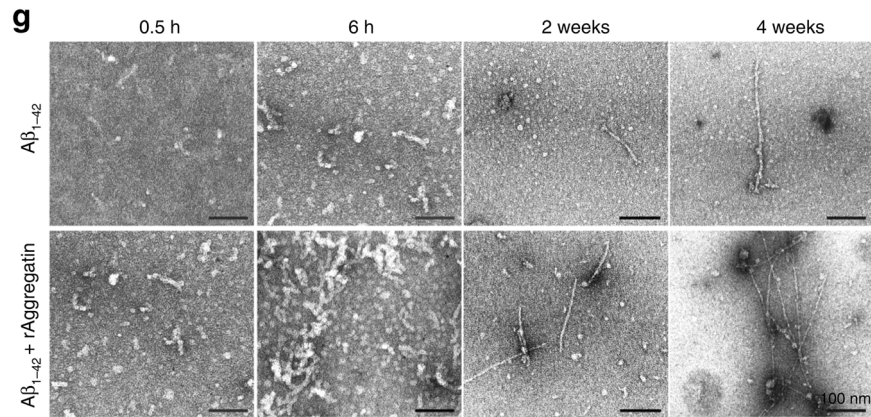
Correction to: *Nature Communications* <https://doi.org/10.1038/s41467-019-13962-0>, published online 21 January 2020.

In the original version of the manuscript, the image shown in Figure 4g, bottom row ( $A\beta_{1-42}$  + rAggregatin), under “6h” was incorrect. This image incorrectly showed the same sample as shown in the original Figure 4g, top row ( $A\beta_{1-42}$ ), under “0.5h”.

The correct version of figure 4g is as follows:



which replaces the previous incorrect version:



Published online: 11 July 2022



**Open Access** This article is licensed under a Creative Commons Attribution 4.0 International License, which permits use, sharing, adaptation, distribution and reproduction in any medium or format, as long as you give appropriate credit to the original author(s) and the source, provide a link to the Creative Commons license, and indicate if changes were made. The images or other third party material in this article are included in the article's Creative Commons license, unless indicated otherwise in a credit line to the material. If material is not included in the article's Creative Commons license and your intended use is not permitted by statutory regulation or exceeds the permitted use, you will need to obtain permission directly from the copyright holder. To view a copy of this license, visit <http://creativecommons.org/licenses/by/4.0/>.

© The Author(s) 2022