



Statistics
Canada

Statistique
Canada

Canada



Statistics Canada
www.statcan.gc.ca



Renewing LifePaths

Presentation to the Population and
Lifecourse Cluster

March 28, 2013



Presentation Outline

- LifePaths overview
- LifePaths renewal
- LifePaths and the cluster

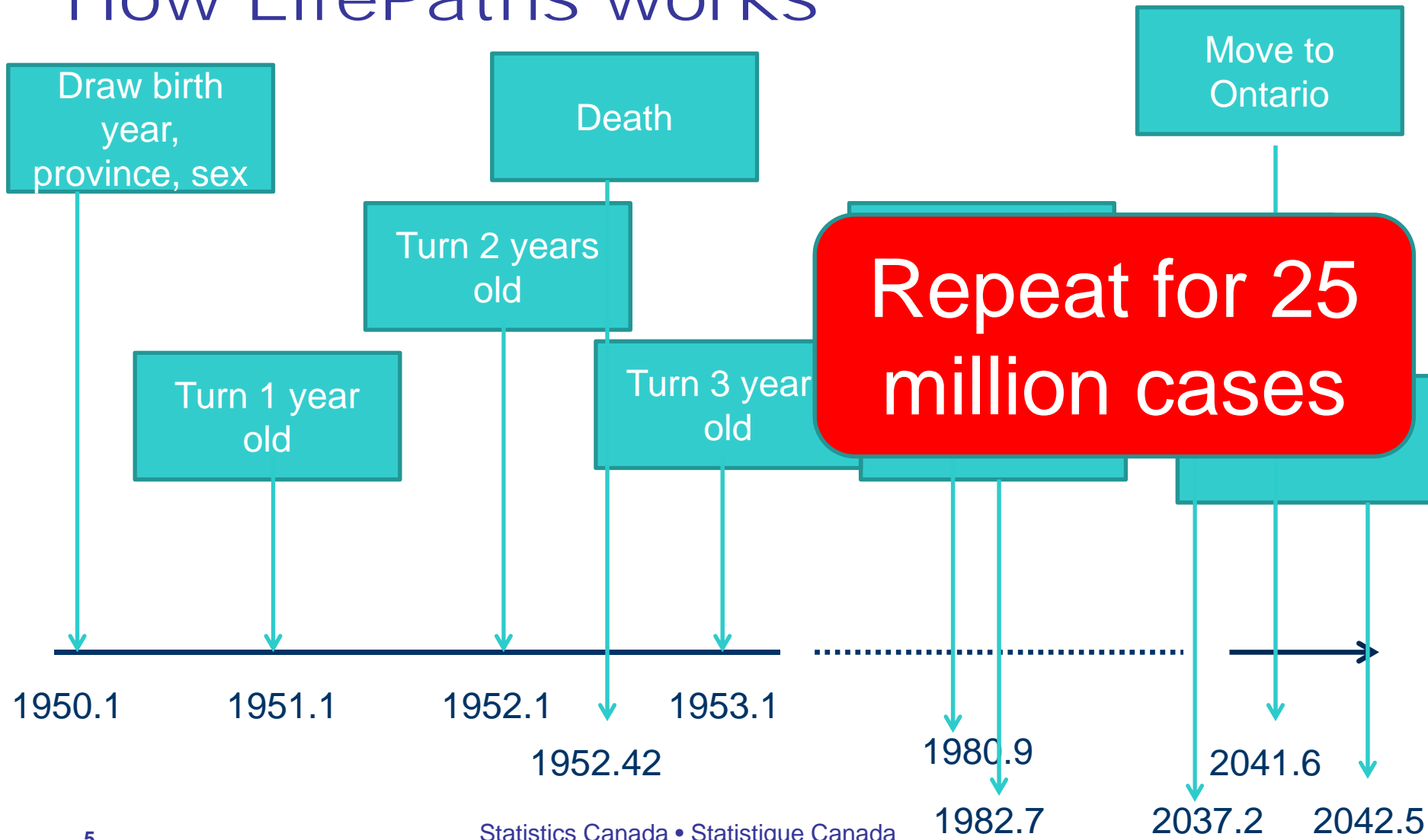


LIFEPATHS OVERVIEW

LifePaths - introduction

- Longitudinal event based microsimulation model
- Continuous multivariate waiting times trigger events
- Integrates surveys, censuses and administrative sources into realistic individuals
- Typically simulates millions of synthetic individuals from birth to death
 - Can simulate full population from 1972 onwards

How LifePaths works





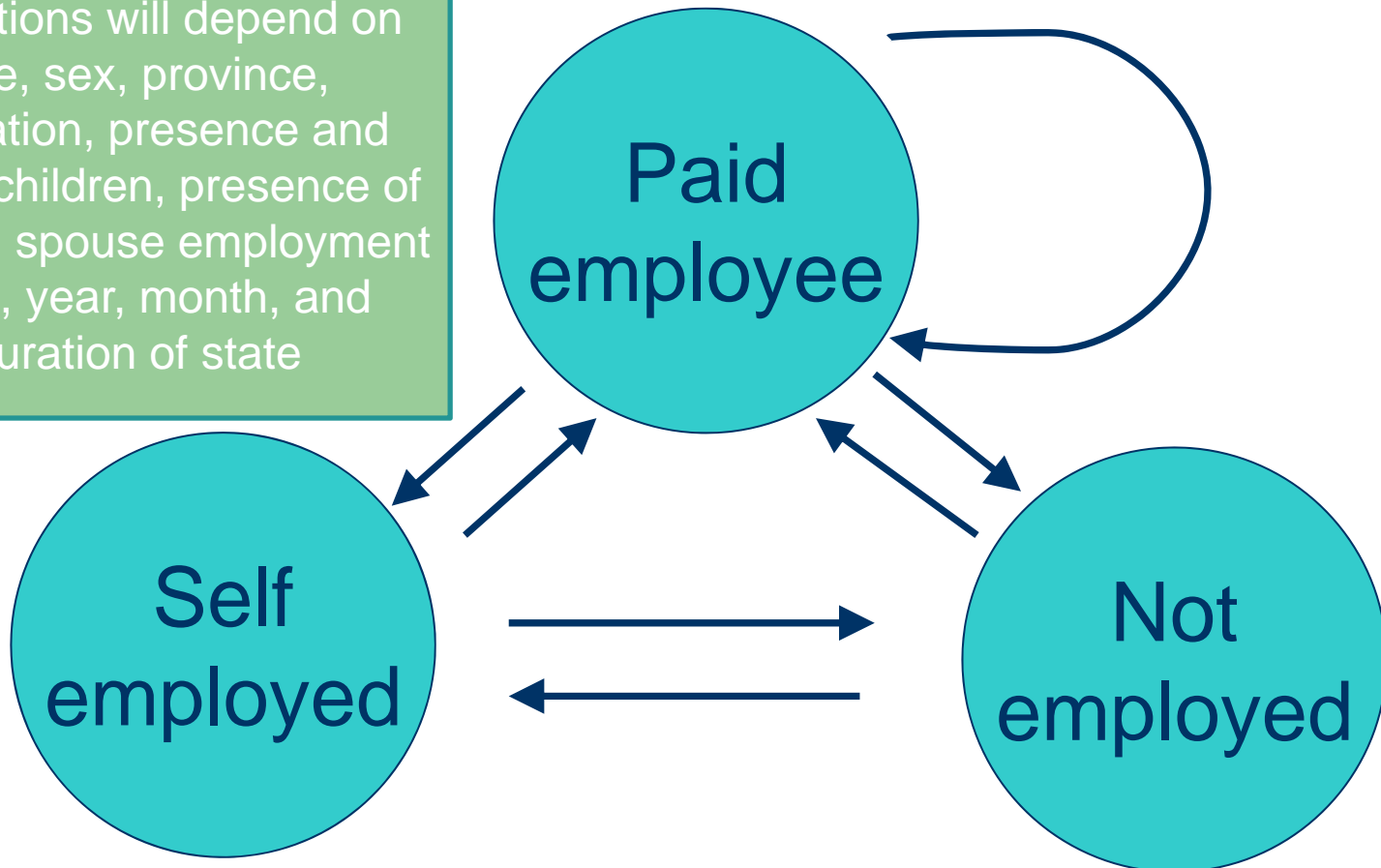
LifePaths Components

- Demography
- Education
- Employment
- Income and earnings
- Savings (RPP, RRSP, principal residence, other savings)
- Taxes and transfers



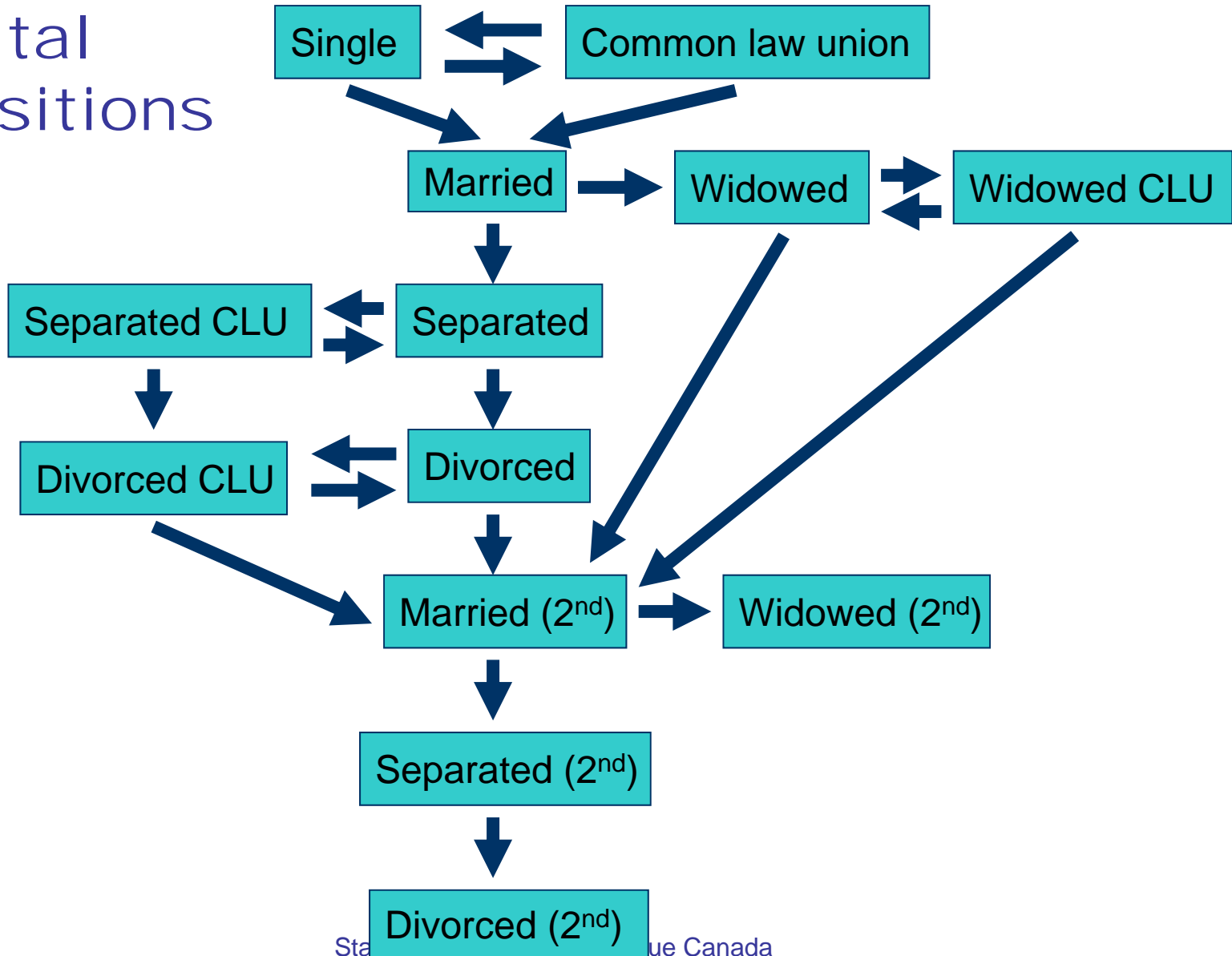
Employment: 7 main transitions

Transitions will depend on age, sex, province, education, presence and age of children, presence of spouse, spouse employment state, year, month, and duration of state





Marital transitions





LifePaths applications

- Replacement rates
- CPP reform
- Caregiving
- Time use
- Student loans



LIFEPATHS RENEWAL



LifePaths strengths

- Lifecourse perspective
- What-if scenarios
- Integrates multiple datasets
- Non-confidential – publically available
- Multi-purpose

LifePaths: context

- Started around 1994
- Strong focus on data integration and reproducing details of the past
- Some modules need updating
 - Cost is the same to update current modules or to redesign them to better suit client's needs
- Received resources in 2013/14 to create consortium

Moving forward

- Improve projection and scenario support
- Increase transparency and documentation
- Simplify models to ease their use and their maintenance
- Increase size and input of user community
- Increase training
- Improve governance



LIFEPATHS AND THE CLUSTER

Possible roles of the cluster

- Input to LifePaths:
 - Feedback, research priorities, design, lifecourse research and modeling expertise
- Use of LifePaths:
 - Ageing research, lifecourse research, academic use of the model
- Training and development
 - Training in lifecourse and statistical analysis necessary to create and use LifePaths, role of students to use Lifepaths or create LifePaths modules

Example: Disability

- Input to LifePaths
 - Relative importance of disability module
 - Definition of disability
 - Necessary and/or desired downstream effects
 - Should disability be a core part of LifePaths?
- Use LifePaths
 - Use disability model in research
 - Students could be involved in building the model

Next steps

- Training material is being prepared
 - A first course to HRSDC in April
- Meetings are being scheduled to get input on various modules
 - Demography is tentatively scheduled for June
- Coordination with other STC modeling activities
 - Demosim – demographic projections
 - PoHem – health
- Meetings being schedule with possible members of the consortium



Contact us

- chantal.hicks@statcan.gc.ca
- martin.spielauer@statcan.gc.ca