



LONDON & MIDDLESEX  
LOCAL IMMIGRATION  
PARTNERSHIP

Presentation to:

Migration and Ethnic Relations Program  
Nov. 4, 2010

Huda Hussein, Project Coordinator

**Funded By:**



Citizenship and  
Immigration Canada

Citoyenneté et  
Immigration Canada

**Co-Led by:**



**United Way**  
of London & Middlesex



# London and Middlesex Local Immigration Partnership – Research Needs and Potential Partnerships



LONDON & MIDDLESEX  
LOCAL IMMIGRATION  
PARTNERSHIP

# Presentation Overview

- About the London & Middlesex Local Immigration Partnership (LMLIP)
- Community Immigrant Strategic Plan
- Next Steps
- Getting Involved – Research Opportunities

# ABOUT THE LMLIP



LONDON & MIDDLESEX  
LOCAL IMMIGRATION  
PARTNERSHIP

# Background

- The LMLIP is funded by Citizenship and Immigration Canada (CIC)
- It is co-chaired by the City of London and the United Way of London & Middlesex

# LMLIP Goals: System Outcomes

- Improved access to services
- Coordinated provision of services
- Improved labor market outcomes
- Strengthened strategic capacity of municipality on immigration issues
- Increased community capacity to respond to emerging needs
- Increased community awareness of immigrant integration needs



# Key Phase One Activities

- Developed a Community Capacity & Needs Inventory- in partnership with the Welcoming Communities Initiative (WCI)
- Established the London & Middlesex Local Immigration Partnership Council
- Developed the Community Immigrant Strategic Plan
- *All done through a consultative process that included 3 community consultations and over 50 Sub-Council & Council meetings*

# Partnership with WCI

- Bridge between community and research
- Brings credibility to work of LMLIP Council

## History:

- In 2005, London established the Welcoming Cultural Diversity (WCD) Committee which was co-led by City of London and United Way of London & Middlesex
- WCI, as a member of WCD, sought input for the CURA proposal
- The LMLIP came about as a result of this committee
- WCI representative on LMLIP Advisory Committee



# Partnership with WCI

## 1. Research

- Questionnaire
- Directory and Map: Snap shot of community

## 2. Central Council

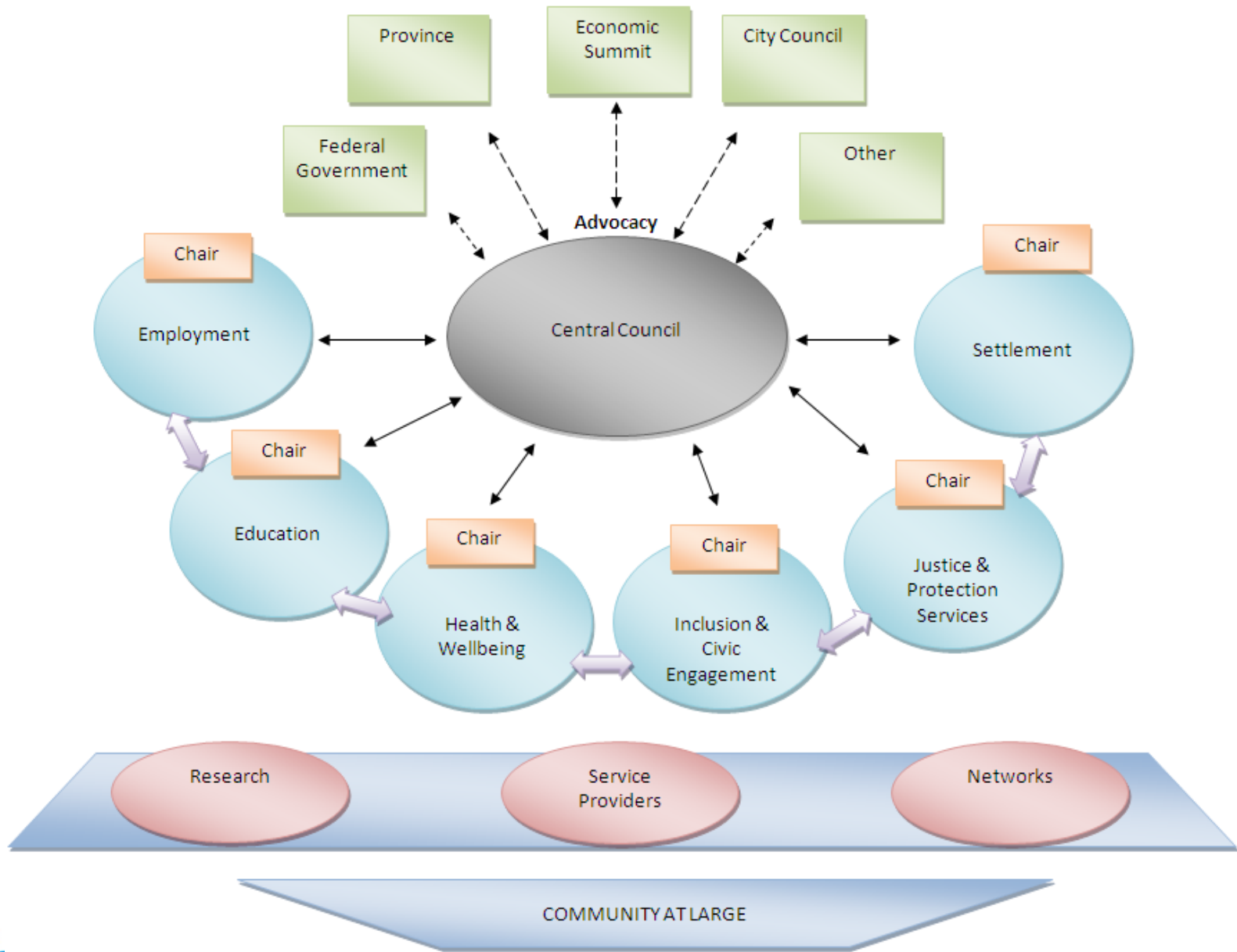
## 3. Welcoming Communities Initiative Local Advisory Committee



# London and Middlesex Local Immigration Partnership Council

- Advisory Committee
- LMLIP Guiding Principles
- LMLIP Council Structure
  - Central Council
  - Six Sub-councils

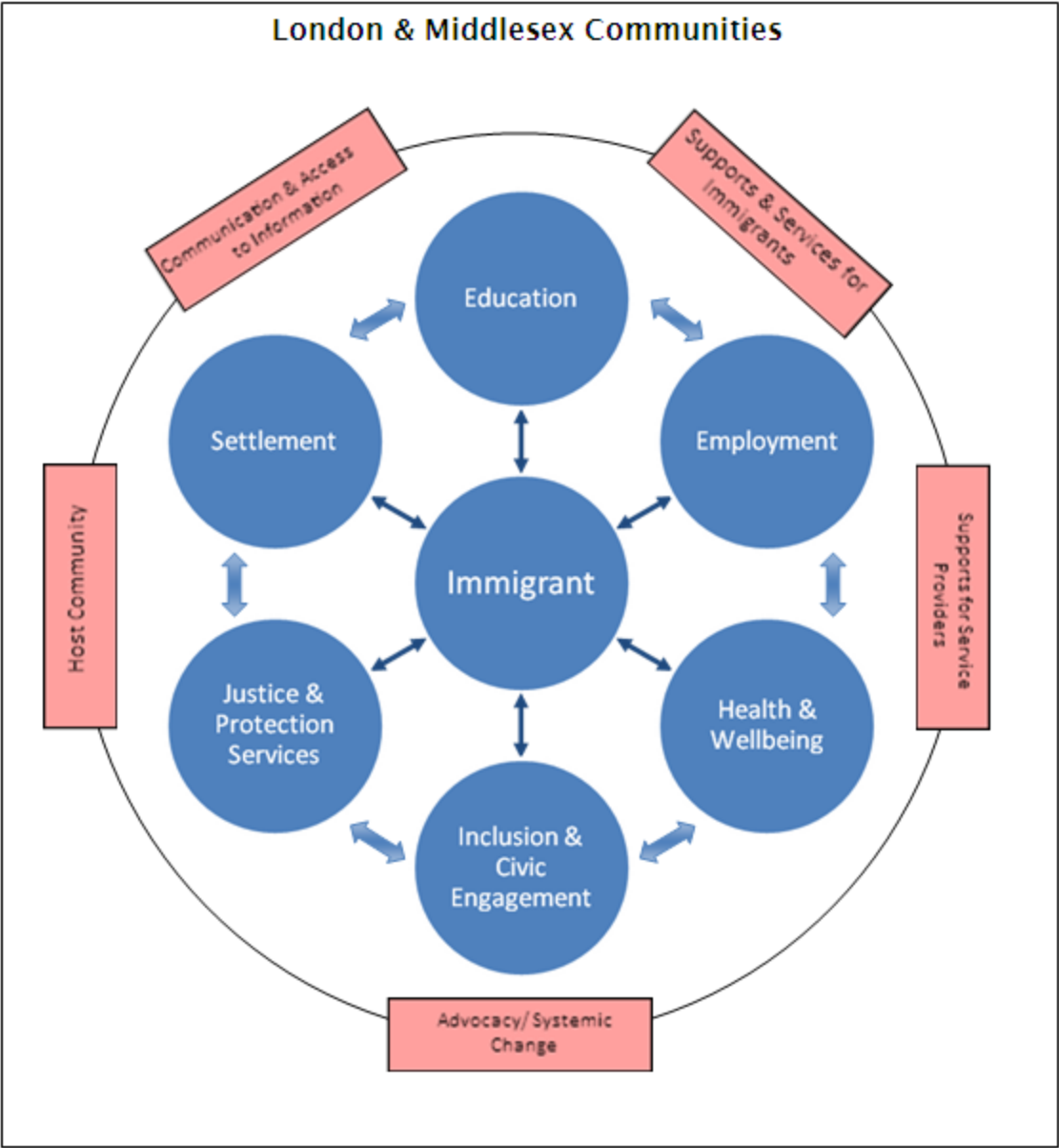




LMLIP  
COMMUNITY IMMIGRANT  
STRATEGIC PLAN



LONDON & MIDDLESEX  
LOCAL IMMIGRATION  
PARTNERSHIP



# Overarching Themes

- Supports and Services for Immigrants
- Communication and Access to Information
- Host Community
- Supports for Service Providers
- Advocacy/Systemic Change

# Supports and Services for Immigrants

- Immigrants have increased access to supports and services to ensure that they can successfully participate in all aspects of the community

# Communication and Access to Information

- Immigrants have increased access to information about available services, cultural expectations and on how to successfully use the system in the community



# Host Community

- London and Middlesex residents are exposed to, educated and engaged in understanding and accepting diverse traditions, behaviours and experiences of all the cultures that make up the community



# Supports for Service Providers

- Service providers and volunteers have increased access to sustainable funding, information on supports to collaboration, diversity training and resources to ensure timely, effective and responsive services for immigrants



# Advocacy/ Systemic Change

- Reduction of systemic barriers (i.e. local, provincial, federal and host community) that impede immigrants' ability to successfully engage in the community

# Areas of Focus

- Education
- Employment
- Health and Wellbeing
- Inclusion and Civic Engagement
- Justice and Protection Services
- Settlement



# Education

- Immigrant learners at all levels (English as a Second language, Language Instruction for New Canadians, elementary, secondary and post-secondary) have access to timely and appropriate programs and services



# Employment

- Immigrants have timely access to a wide range of employment-related supports, including mentorship, bridging, job search programs, credential assessment, employment and employment supports

# Health and Wellbeing

- Immigrant health and well-being is supported through a range of programming including mental health, impact of trauma/war, access to services, recreation, nutrition and life skills



# Inclusion and Civic Engagement

- Social, parental, child and cultural supports are available to ensure that all immigrants are included and engaged in our community.





# Justice and Protection Services

- Immigrants understand the Canadian justice system and have access to information and supports related to preventative services such as, criminal justice, child welfare, and other services.



# Settlement

- Immigrants' settlement experiences are positive and welcoming, through the availability of interpretation services, housing, transitional services, information and referrals



# Next Steps

- Ongoing community engagement to successfully implement the Plan
- LMLIP Council to provide strategic oversight
- LMLIP Sub-Councils to lead implementation
- Continue partnerships

# Getting involved ... Research Opportunities



LONDON & MIDDLESEX  
LOCAL IMMIGRATION  
PARTNERSHIP

# Research Opportunities

- Is the Family English As a Second Language Program effective and if so, could it be transferred to London?



# Research Opportunities: Cont

- How effective are segregated English as a Second Language and English Literacy Development (ELD) in the school system and what alternatives are available?



# Research Opportunities: Cont

- What partnership models are available to provide more culturally sensitive responsiveness to issues that may arise in the community?

# Research Opportunities: Cont

- What are the potential benefits of recreation for immigrant integration and well-being? What programs could be put into place to provide affordable recreation opportunities for immigrants?





## Research Opportunities: Cont

- Are there effective municipal volunteer programs for immigrants in place in other communities and could they be transferred to London?



## Research Opportunities: Cont

- Are there successful models of strategies for counteracting negative media portrayal of immigrants? How might these strategies be implemented in London?



## Research Opportunities: Cont

- Have Community Police Advisory groups been beneficial for other communities, and in what way? Would it be beneficial to set up such a group in London?



# Research Opportunities: Cont

- What are the benefits of establishing a Media Literacy Council in London, and what process should be followed to do so? Are there lessons to be learned from other locations?

## In conclusion

- The six sub-councils have identified close to sixty challenges facing the successful integration of immigrants, and have recommended strategies to address these
- Phase Two of the plan – each sub-council identified a work plan for Year One of the implementation phase. Work is currently commencing on a number of projects

- For the full Plan, updates on the Project, and products to date, visit the Immigration Portal:

[www.welcome.london.ca](http://www.welcome.london.ca)

THANK YOU!

# Contact Information

Huda Hussein

Project Coordinator

Phone: 519-438-1723 ext. 338

Cell: 519-709-2982

Email: [hhussein@uwlondon.on.ca](mailto:hhussein@uwlondon.on.ca)

[www.welcome.london.ca](http://www.welcome.london.ca)



LONDON & MIDDLESEX  
LOCAL IMMIGRATION  
PARTNERSHIP